

MAPA



ANNUAL REPORT

2024

TABLE OF CONTENTS

03 Unlocking New Resources

07 MAPA as a Convener

11 Bringing More Voices to the Table

13 Affordable Housing Support

15 Regional Projects Map

17 Heartland 2050

21 About MAPA

As we look back on the past year, we recognize MAPA's work to serve our region by **planning with intention**, as well as the **tenth anniversary** of the the Heartland 2050 Regional Vision.

Through **extensive collaboration** MAPA is building strong relationships and strategic partnerships with our members.

These inclusive partnerships allow the agency to **engage our communities**, supporting their needs and identifying projects which help create growth and vibrancy throughout the region. These partnerships are also key as we work together to **recover and rebuild** from the damage caused by this year's severe weather outbreaks.

Through partnerships and collaborations, MAPA **coordinated and supported** several local applications for very competitive federal discretionary grant programs for transformative projects.

In addition, MAPA's evolving partnership with the Nebraska Department of Transportation allowed the agency to bring **technical resources** from federal partners to our communities and **unlock additional state funding** for our region.

In order to align our work with current needs, MAPA updated its Strategic Plan to focus on the **outcomes** the agency wants to see. Many of these outcomes are tied to the Heartland 2050 goals of building vibrant communities.

Be assured that MAPA remains your committed partner, dedicated to using its resources to support **collaborative solutions** for existing and emerging issues in the region to build a vibrant region with a high quality of life for all.



Douglas Kindig

Mayor Doug Kindig

MAPA Board of Directors Chair



Pete Festersen

Councilmember Pete Festersen

MAPA Council of Officials President



This year marks the tenth anniversary of the Heartland 2050 Regional Vision. **What started as a plan to think boldly about the challenges facing our region over the next 30 years has turned into an organizing principle of our work.** We've hosted summits and leadership exchanges with communities across the county, created new data resources to support local policy-making, in addition to awarding millions of dollars for plans and projects to implement the principles of the vision. It's been a transformative decade for the work of MAPA, and it's built on the leadership of our members and their willingness to tackle the issues impacting quality of life in our region in the coming decades.



The past year has been one where I've reflected on our agency's tag-line of **Connect. Plan. Thrive.**

I'm proud of the MAPA Team's work to support conversations between Mills and Cass Counties, opportunities to invest in air quality and resilience in a changing climate, continued work

to connect communities in western Douglas County, and transformative infrastructure investments in every corner of the region that help us attract and retain the workforce we need. The collaborative spirit is strong within our region and the MAPA team is excited to play a part in facilitating these crucial conversations.

The weather this spring and summer have served as a reminder of all the work that local community leaders do to prepare for, mobilize during, and recover after natural disasters. From tornadoes to flooding to straight line winds, nearly every corner of our region was impacted by severe weather. I'm enormously grateful for all the leadership demonstrated from cities, counties and regional partners to tackle these challenges. The quick response of agencies lessened the impacts of some of these events, while other communities will take a long time to recover fully. Our team here at MAPA is here to support these efforts in the months and years to come.

Thank you to all the members and partners who have dedicated their time to our committees, planning processes and community events during the last year. We look forward to working alongside all of you in the year to come, and are appreciative of the opportunity to serve the communities of this region.

With gratitude,


Michael Helgerson
MAPA Executive Director



WHAT'S NEXT?

We need your input! In the year ahead MAPA will be updating its Long Range Transportation Plans (LRTP) and Comprehensive Economic Development Strategy (CEDS). These documents guide MAPA's work and help local communities come together to prioritize projects and investments across the region.



Learn more about the LRTP at www.mapacog.org/projects/lrtp/

Learn more about the CEDS at www.mapacog.org/projects/ceds/

MAPA's planning work is critical to securing local, state and federal funding for local projects. We want to ensure our planning documents serve your community's current and future needs. Look for upcoming engagement opportunities for these or other MAPA projects, or contact any of our staff to see how you can get involved.

Since passage of the Infrastructure and Investment Jobs Act three years ago, **MAPA has worked purposefully and collaboratively**, whether as the lead agency or in a supportive role, **to build grant applications and secure millions of dollars** in federal discretionary funding for projects which enhance infrastructure and economic development investments throughout the region.

UNLOCKING NEW RESOURCES

In the past year, to assist its member communities, MAPA:



In partnership with the Nebraska Department of Transportation, **hosted an Innovative Finance Workshop by the U.S. Department of Transportation's Build America Bureau**. The workshop provided expertise to local governments on how to streamline access to federal transportation credit programs and private capital in private/public partnerships for infrastructure investments.



Is working to align efforts on local, regional and statewide climate action plans. The U.S. Environmental Protection Agency (EPA) awarded both the State of Nebraska and the City of Omaha a **Climate Pollution Reduction Planning Grant** to develop climate action plans and reduce greenhouse gas emissions in six key areas. MAPA is facilitating discussions with all levels of government to ensure local priority projects are included in the plan and eligible for federal implementation funding.



Applied for and was **awarded competitive grants from the Safe Streets and Roads for All program to create regional Comprehensive Safety Action Plans**, which will include projects aimed at improving traffic safety for all users and reducing traffic fatalities to zero by 2040.



Applied for a federal grant to create a Transformative Regional Investment Prioritization System to enhance project selection efficiency and ensure projects align with community needs and values, discretionary programs and new funding sources.

As a result of its efforts to pursue new, creative approaches to planning, **MAPA's transportation work received awards this year including:**



MAPA's Sarpy County Planning & Environmental Linkages (PEL) Study received the 2024 Gordon Frank Outstanding Accomplishment in Government Award at the SAVE International Value Summit in recognition of its innovative use of Value Planning during the environmental review process. The PEL Study evaluated the need and locations for a potential new interchange along Interstate 80 in western Sarpy County.

www.mapacog.org/projects/i80pel/

**\$7.56
MILLION
BUILD GRANT**

MAPA received a 2024 Excellence in Regional Transportation Award from the National Association of Development Organizations (NADO) for the Blair South Bypass project. MAPA helped secure a **\$7.56 million BUILD grant** to fund the construction of this project that reduces heavy truck traffic and increases pedestrian and bicycle safety in Blair's busy downtown business district (see picture below).



The NADO 2024 Aliceann Wohlbruck Impact Award was awarded to Chariton Valley Planning & Development Council for the **Iowa Impact Map**. The map, designed by MAPA, showcases the impact of projects funded by the Iowa Councils of Government throughout the state.

www.iowacog.com/impact-map



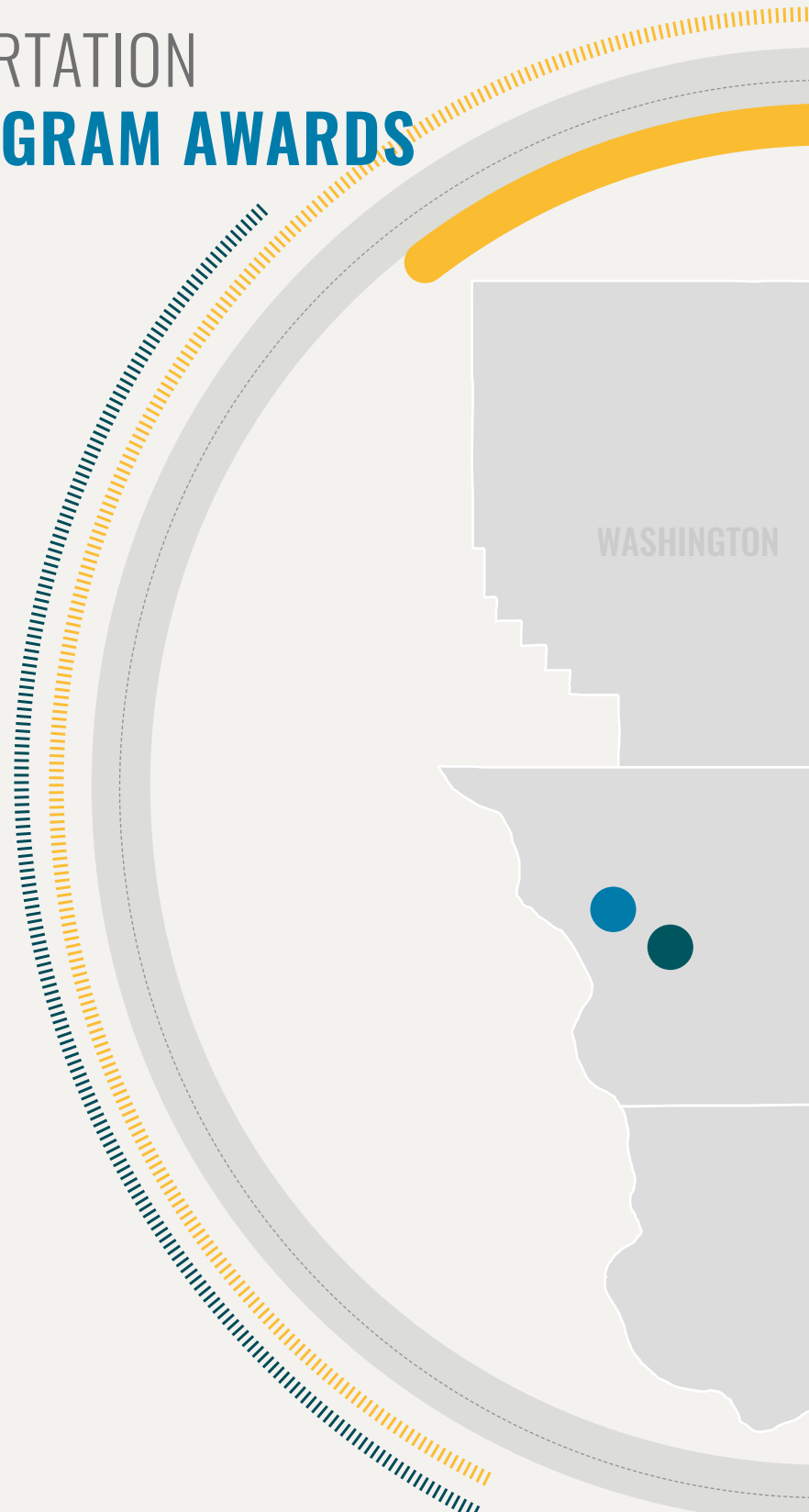
NEBRASKA TRANSPORTATION ALTERNATIVES PROGRAM AWARDS

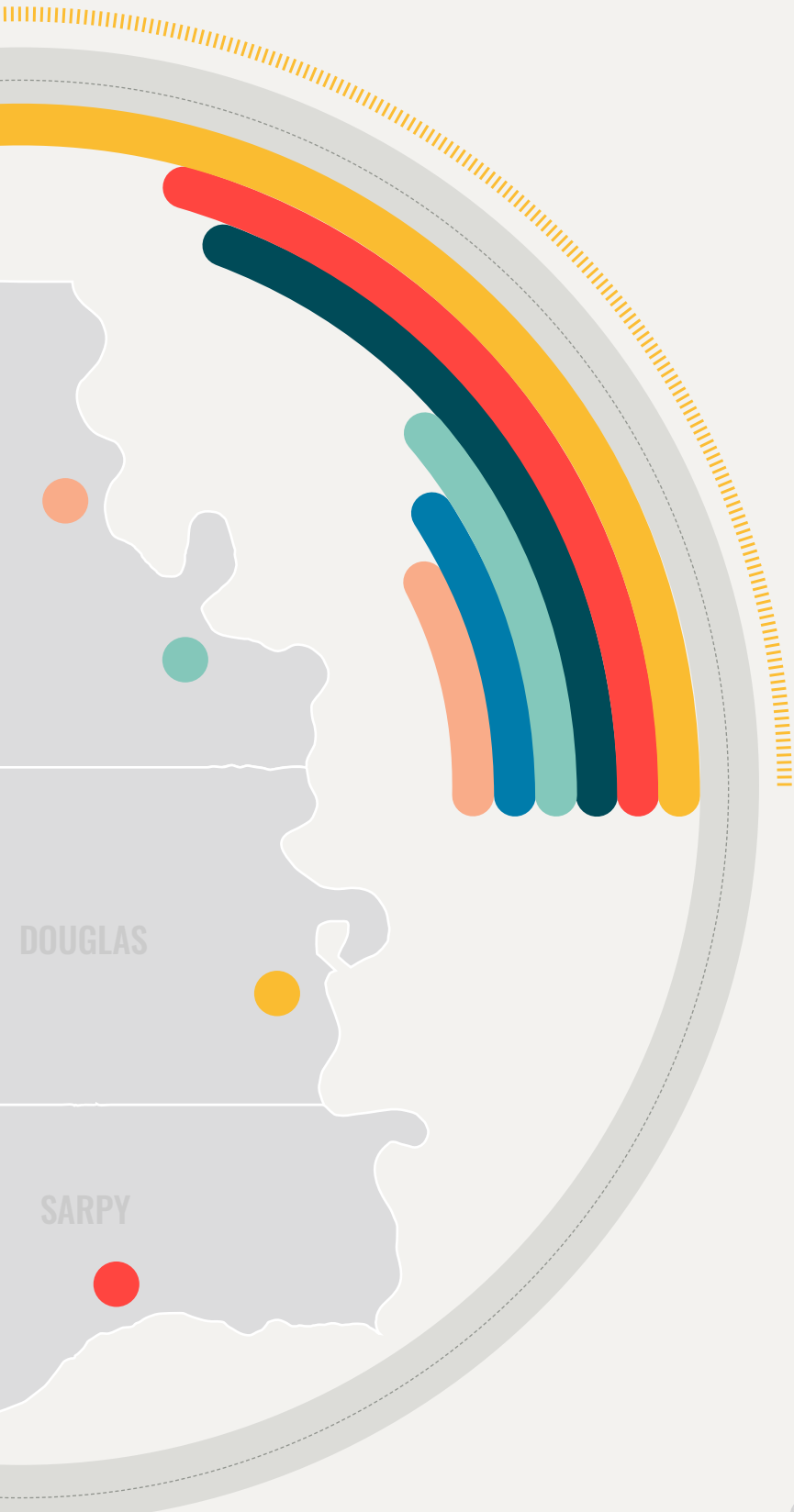
In a major change that unlocked millions in funding for our region, MAPA worked with the Nebraska Department of Transportation to ensure communities in MAPA's Transportation Management Area were eligible for funding from the state Transportation Alternatives Program (TAP). Omaha, Papillon, Douglas County, Blair, Fort Calhoun and the Papio-Missouri River Natural Resources District (NRD) are among 13 Nebraska communities and agencies sharing in \$50 million awarded by the 2023 Nebraska TAP program. It's the largest amount of funding awarded to Nebraska from the program since its inception in 1991.

\$33
Million
MAPA REGION



\$17
Million
NON MAPA REGION





Projects in MAPA's region awarded funding include:

\$12 Million

**Midtown Medical Center
Bikeway Connection**
Omaha

\$2.5 Million

Elkhorn River Trail Bridge
Papio-Missouri River
Natural Resources District

\$7.5 Million

**Schram Spur N-370
Undercrossing & Trail Segment**
Papillion

\$6.67 Million

Western Douglas County Trails
Douglas County

\$1.7 Million

River Road Connector Trail
Blair

\$3.45 Million

**Connecting Ft. Calhoun with
Safer Transportation Alternatives**
Fort Calhoun

\$33,820,000

MAPA AS A **CONVENER**

MAPA brings together stakeholders to address new or emerging issues in the region and uses its resources to support collaborative regional solutions.



ICE JAM PREVENTION

In the wake of the 2022 ice jams which threatened energy generation and water delivery on the Missouri River, MAPA facilitated conversations with key stakeholders including OPPD, MUD, the Army Corps of Engineers and state and local emergency management agencies. The group collaborated to develop a resource guide for emergency management staff in the region to help prevent ice jams and low river levels.



METRO AREA MOTORIST ASSIST

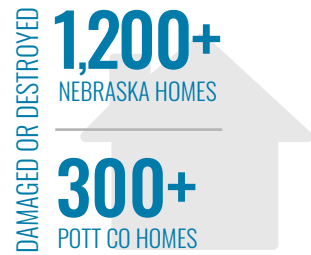
Until 2020, MAPA coordinated the Metro Area Motorist Assist program with the Nebraska State Patrol. Volunteers patrolled freeways and interstates in the metro area, coming to the aid of stranded motorists. The program both increased safety and removed some of the burden from other first responders.

In 2023, the Nebraska Department of Transportation revived the program with paid contractors to continue the legacy of this important transportation safety initiative.



TORNADOES-STORM RELIEF

MAPA is working with community partners affected by recent tornado outbreaks, storms and flooding to secure funding for recovery efforts. Tornadoes on April 26 damaged or destroyed more than 1,200 homes in Nebraska and more than 300 homes in Pottawattamie County, Iowa, killing a Minden man.





PLATTE RIVER BRIDGE TRAIL

MAPA convened partners to bring the Platte River Bridge Trail on Hwy 34/75 to fruition by orchestrating a massive infrastructure agreement to swap state for federal funding to build the bridge and create pedestrian and bicycle access.

The new trail, which opened Aug. 3, provides greater safety to bridge users and increased recreational opportunities for trail users by providing a connection across the Platte River between Sarpy County and Cass County.



TRANSPORTATION SYMPOSIUM

MAPA and Metro Transit co-hosted a Diversity, Equity, and Inclusion Symposium in August 2023 to better understand the transportation needs and barriers experienced by marginalized groups in our region.

Attendees to the Symposium included transit users, transportation providers, elected officials, community organizations, as well as government and human service agencies. Each provided their experiences and knowledge of the state of transportation in the region.

MAPA and Metro Transit will work with the Coordinated Transit Committee to implement solutions to the common barriers identified by participants.

The event was sponsored by the National Aging and Disability Transportation Center (NADTC), a national organization that provides resources and training on accessible transportation to empower communities and individuals.



Read the final report at
tinyurl.com/NADTC-report



At the Symposium, a diverse group from throughout the region discussed barriers to transportation access and how transportation can be a consistent challenge for marginalized groups.



MILLS COUNTY & CASS COUNTY PLANNING COALITION

Because of our regional focus, MAPA often works across state lines to help address issues of mutual interest.

MAPA's Community & Economic Development Team is currently facilitating conversations between community leaders in Cass County, Nebraska, and Mills County, Iowa, to coordinate efforts supporting regional growth and economic development.

Community members have already identified areas of potential collaboration around infrastructure investments, flood resilience planning, trail planning and development opportunities.

Let us know if MAPA can help support these types of conversations for your community.



BROWNFIELDS TRAININGS

Properties with potential environmental contamination, known as brownfields, can impede a community's economic development.

To help local communities deal with these problem properties, MAPA hosted workshops with local, regional, state and federal partners to educate residents, developers and community leaders about resources to address environmental concerns and prepare sites for development.

Workshops took place in Omaha in November 2023 and Treynor, Iowa, in January 2024.



Projects that will be funded this year include:



Plants and materials for community gardens at three elementary schools



New wayfinding signs for the FIRST AVE Trail



Vouchers for children to purchase fresh produce at the city's farmer's market



A new water bottle filling station/drinking fountain for Bayliss Park



Summer program to teach children about nutrition



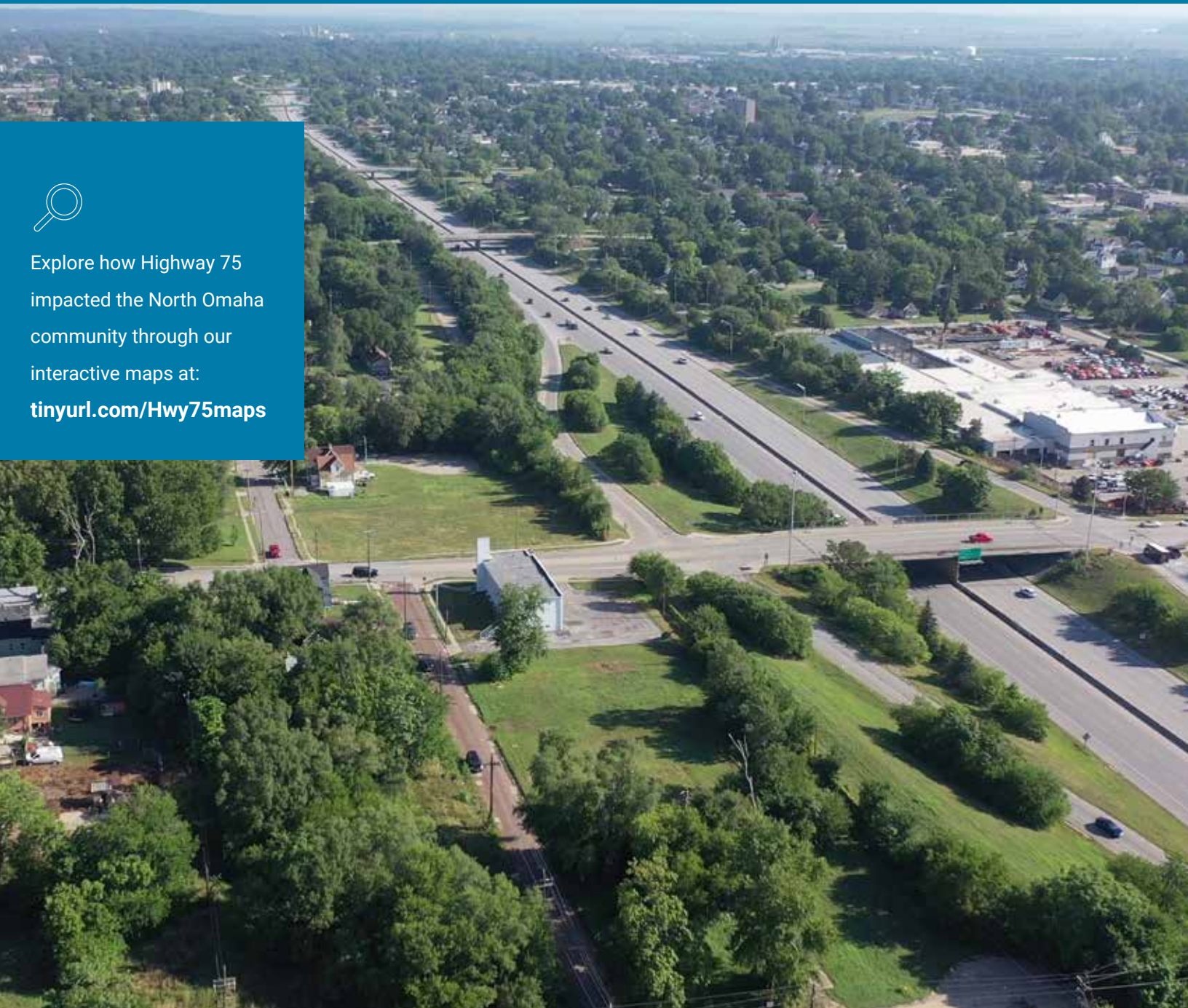
\$60,000

will be received by Council Bluffs over three years to **implement health and wellness-related projects** in the community.

The projects were identified during a community health and wellness needs assessment offered through the Iowa Department of Health and Human Services and coordinated by MAPA.



Explore how Highway 75 impacted the North Omaha community through our interactive maps at: tinyurl.com/Hwy75maps



THRIVING COMMUNITIES GRANT

MAPA partnered with the City of Omaha and Spark CDI to secure a U.S. Department of Transportation federal Thriving Communities technical assistance grant. This award supports work to study the impacts of Highway 75 on North Omaha and how to reconnect the historically Black community that was displaced and separated by this infrastructure project.

MAPA hosted a project kickoff meeting with federal, state, local and community partners in July 2024.

Contact MAPA's Transportation Team to get involved.





BRINGING MORE VOICES TO THE TABLE

EQUITY IMPACT INVESTMENTS

To help boost economic development efforts in South Omaha's Latino community, MAPA is partnering with the Latino Economic Development Council (LEDC) and Canopy South in a three-year capacity-building program through the US Economic Development Administration.

The group will focus work on fostering equitable growth and unity throughout Douglas County by bringing together diverse community stakeholders committed to addressing key urban challenges through consistent meetings, knowledge sharing, and resource coordination.

Contact any of the project partners to get involved.



Che Barnett

ECONOMIC RECOVERY CORPS FELLOW

The North 24th Street Business Improvement District (BID) is undertaking the transformation of North 24th Street.

MAPA supported the BID's successful application for technical assistance to the Economic Recovery Corps (ERC), a collaborative initiative to accelerate COVID-19 pandemic recovery in distressed areas. Over the next 2 ½ years, ERC fellow Che Barnett will assist the BID in the implementation of the North 24th Street Streetscape Master Plan. Learn more at www.north24thstreetbid.com/

AFFORDABLE HOUSING SUPPORT

Shortage of affordable housing is a key issue in the region. To help meet this need and increase the availability of affordable housing, MAPA leverages its resources to support several housing-related projects.



Winning ADU designers accept their award. Photo courtesy of AARP Nebraska.



ADU COMPETITION

In 2023, MAPA partnered with AARP Nebraska on “An ADU for U” design competition. An ADU, or Accessory Dwelling Unit, is a separate residential unit on the same lot as a single-family home like a basement rental or backyard tiny home. The competition aimed to increase awareness of how ADUs may be used to help meet our community’s housing needs. Contest winners are submitting designs to the City of Omaha as part of its new Fast Track permitting program.





\$150,000
GRANT AWARD

HOUSING MARKET VALUE ANALYSIS

MAPA will conduct a regional Housing Market Value Analysis thanks to a \$150,000 grant award from the Front Porch Investments' Development and Preservation Fund. The Market Value Analysis will provide a data-driven framework to understand current housing conditions and support local decision-making.



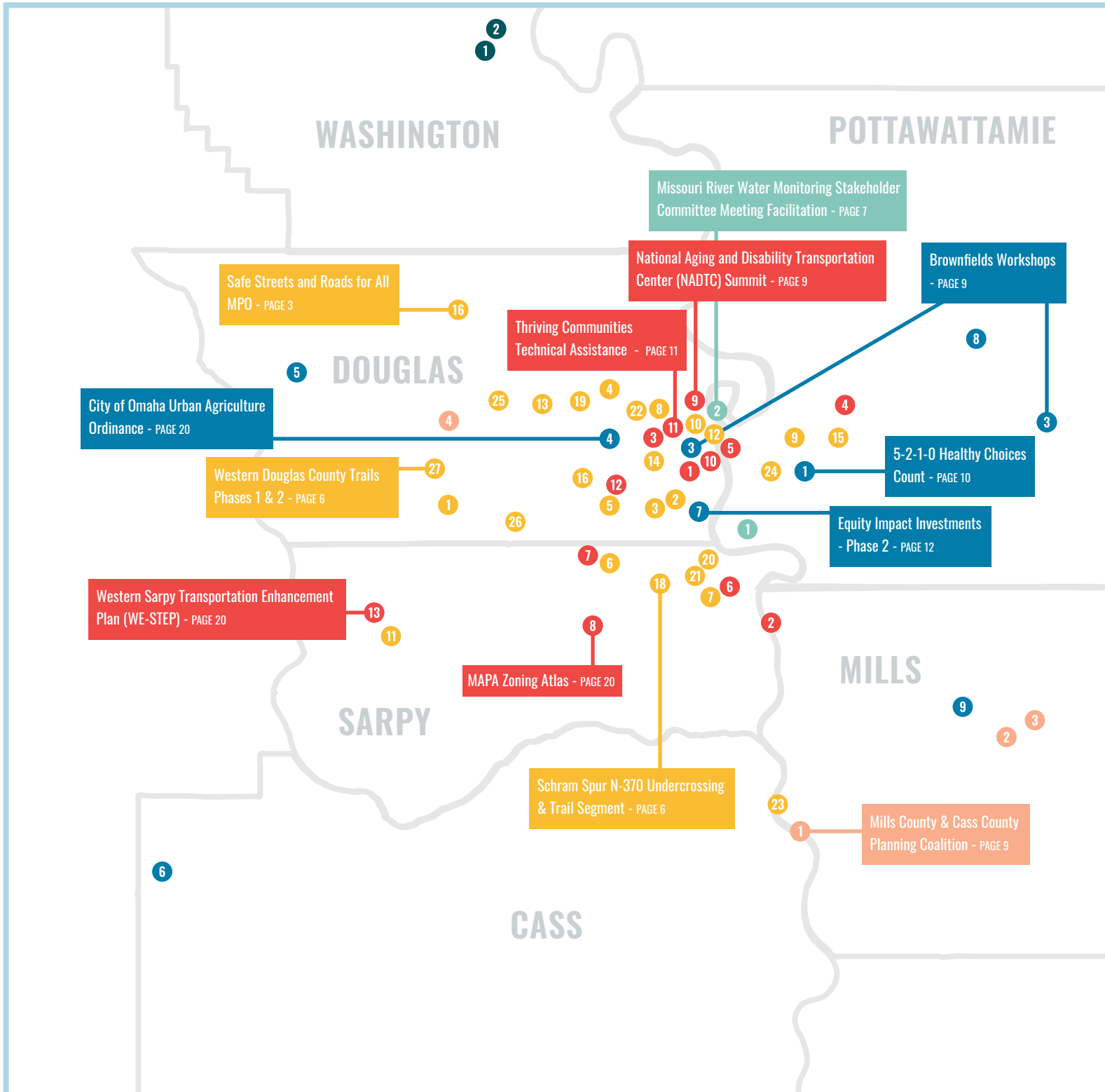
\$2
MILLION
AWARDED

POTTAWATTAMIE COUNTY HOUSING TRUST FUND AWARDS

MAPA serves as the grant administrator for the Pottawattamie County Housing Trust Fund, which allocates funding to organizations that serve the housing needs of low to moderate income households within Pottawattamie County, Iowa. The Trust Fund awards grants for affordable housing projects, including new construction and rehabilitation of existing units. Since 2011, the Trust Fund has awarded more than \$2 million.

Homes under construction by Habitat for Humanity of Council Bluffs, a Housing Trust Fund grant awardee.

REGIONAL PROJECT LIST





3
Pottawattamie County
Housing Trust Fund - PAGE 14

17
Safe Streets and Roads for All
RPA-13/18 - PAGE 3

TRANSPORTATION

- 1 24th Street Corridor Study RAISE Grant
- 2 Bellevue Toll Bridge Study
- 3 City of Omaha Beltline Study
- 4 City/County Connector Trail
- 5 Council Bluffs Multimodal Connection & Expansion PEL Study
- 6 Fort Crook Road Corridor Study
- 7 La Vista Bicycle & Pedestrian Master Plan
- 8 MAPA Zoning Atlas - see page 20
- 9 National Aging and Disability Transportation Center (NADTC) Summit - see page 9
- 10 Omaha Bicycle & Pedestrian Master Plan
- 11 Thriving Communities Technical Assistance - see page 11
- 12 Travel Demand Management Commute to Work Survey
- 13 Western Sarpy Transportation Enhancement Plan (WE-STEP) - see page 20

FEDERAL

- 1 168th Street West Center to Q
- 2 36th Street - Phase 2
- 3 42nd & D Viaduct
- 4 72nd & Ames Transit Access & Pedestrian Amenities
- 5 72nd & D Street Viaduct
- 6 Applewood Creek Trail City of La Vista
- 7 Cornhusker Road
- 8 Cuming Street / NW Radial Hwy/Military Ave Corridor Study
- 9 East Beltway Project - Council Bluffs
- 10 Economic Recovery Corps Fellow
- 11 Gretna to Wehrspann Trail
- 12 North Downtown Riverfront Pedestrian Bridge
- 13 Omaha Roundabout Program
- 14 Omaha Urban Core Street Reconfiguration Study
- 15 Pottawattamie County Multi-Use Trail - Phase 1
- 16 Safe Streets and Roads for All - MPO - see page 3
- 17 Safe Streets and Roads for All - RPA-13/18 - see page 3
- 18 Schram Spur N-370 Undercrossing & Trail Segment - see page 6
- 19 Signal System Master Plan
- 20 South Expressway Reconstruction - Phase 1
- 21 South Expressway Trail - Phase 1
- 22 Systemic Safety NW Radial
- 23 US 34 Bike and Walking Trail - Phase 2
- 24 West Graham Avenue Reconstruction
- 25 West Maple I-680 to US 275
- 26 West Papio Millard Connection
- 27 Western Douglas County Trails - Phases 1 & 2 - see page 6

COMMUNITY DEVELOPMENT

- 1 5-2-1-0 Healthy Choices Count - see page 10
- 2 Avoca Strategic Plan Update
- 3 Brownfields Workshops - see page 9
- 4 City of Omaha Urban Agriculture Ordinance - see page 20
- 5 City of Valley Strategic Planning
- 6 Eagle Community Needs Assessment
- 7 Equity Impact Investments - Phase 2 - see page 12
- 8 McClelland Municipal Code Updates
- 9 Silver City Community Development & Capacity-Building Assistance

HOUSING

- 1 Blair Rural Workforce Housing Fund
- 2 Dana Suites Adaptive Reuse
- 3 Pottawattamie County Housing Trust Fund - see page 14

DISASTER RECOVERY

- 1 Council Bluffs Levee Repairs
- 2 Missouri River Water Monitoring Stakeholder Committee Meeting Facilitation - see page 7

PLANNING

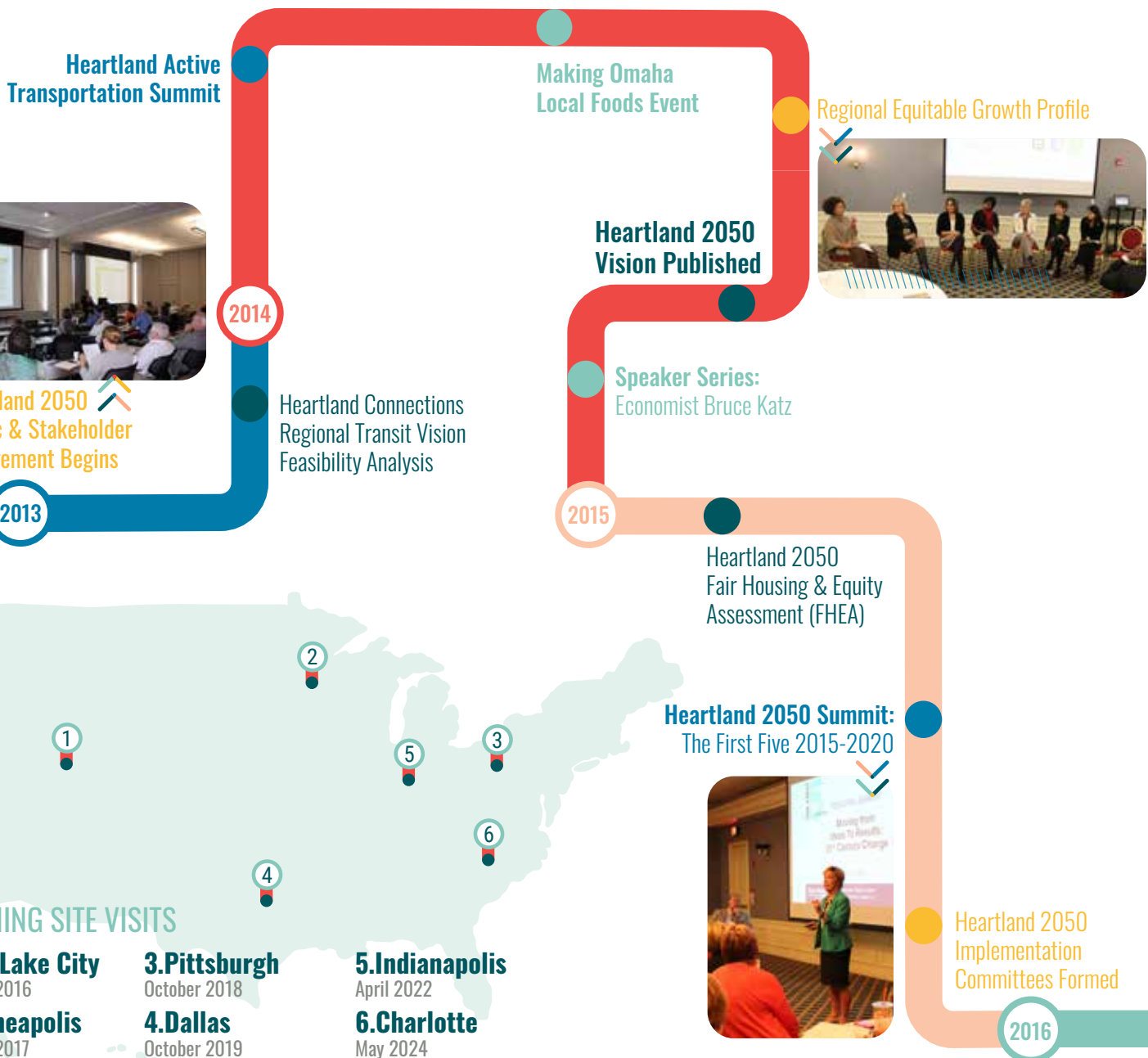
- 1 Mills County & Cass County Planning Coalition - see page 9
- 2 Mills County Hazard Mitigation Plan Update
- 3 Mills County M&P Accreditation Study
- 4 Western Douglas County Planning Collaborative

HEARTLAND

This year MAPA celebrates the 10th anniversary of the Heartland 2050 Regional Vision. Developed through extensive public engagement, the Vision is a shared road map for our region with strategies to help build and connect thriving, vibrant communities.

Learn more about Heartland 2050 at www.heartland2050.org

Get involved! Join a Heartland 2050 Committee, attend one of our upcoming events, or connect with MAPA staff to see how we can collaborate.



2050 >>

- H2050 Milestones
- H2050 Summit
- Speaker Series
- Learning Site Visits
- Plans, Projects & Reports

2017

Heartland 2050 Summit featuring Joe Reardon,
President of the Kansas City Area Chamber of Commerce



Speaker Series:
One Million Cups

Heartland 2050
Action Plan Adopted

Sustainability Launchpad with
Chuck Marohn from Strong Towns

Heartland 2050
Executive Committee
becomes the Regional
Planning Advisory
Committee (RPAC)

Learning Site Visit:
Salt Lake City



Heartland 2050 Summit:
Close the Gap, Featuring Ben Pierce, HDR

Everyone Prospers: The
Path to Equity Symposium
with Dr. Michael McAfee,
President of PolicyLink



Heartland 2050 Summit &
Walking Tour with Jeff Speck,
author of Walkable City



Ability Forum
with Mark Fenton



Learning
Site Visit:
Minneapolis



Metro
Smart Cities
Established

Block Talk Walk Audit
Program Starts

Heartland 2050 Summit



2018

Heartland
2050 Summit:
The Power of
Collaboration



HEARTLAND 2050



Learning Site Visit: Pittsburgh

Livable Communities Workshop



Expanding Housing Choices Forum

Interactive Regional Development Report: mapacog.org/development

2020

Return on Transit Investment Analysis Completed

2019

Block Talk Walk Audit Toolkit Published

Heartland 2050 Summit: Connecting People to Life: Transit in New Light with Katharine Eagan Kelleman, CEO of the Allegheny County Port Authority in Pittsburgh



Learning Site Visit: Dallas

Regional Community Health Needs Assessment

Better Block Walking Tours and Workshops



Metro Transit becomes a **Regional Transit Authority**

Close the Gap: Mobility Freedom Speaker Series

Heartland 2050 Mini-Grant Program Established

Close The Gap White Paper and Toolkit

Regional Equitable Growth Profile Update

Regional Community Health Needs Assessment

Affirmatively Furthering Fair Housing

Regional Health Council Formed

“ Omaha is growing. Omaha is interconnected. We need to look at supporting ourselves as a region. This is a step to start to think that way and start to prepare ourselves for future growth. ”

- Lauren Cencic, CEO, Metro Transit

2021

Metro Region Community Health Improvement Plan

GoHub Data Portal: gohub.mapacog.org

ConnectGO Strategy

Equity Learning Capsule

Western Douglas County Planning Collaborative

Recast Your City Workshop with Illanna Preuss



Regional Zoning Atlas



Learning Site Visit: Charlotte

Ice Jam Playbook

2022



Learning Site Visit: Indianapolis

Heartland 2050 Summit featuring Tamika Butler



Baby Steps Giant Leaps Video and Discussion Toolkit

2024

Mills & Cass County Planning Coalition

FUTURE

- Housing Market Value Analysis
- Regional Equitable Growth Profile Update

2023

City of Omaha Urban Agriculture Zoning Ordinance

Equitable Development Scorecard Published heartland2050.org/scorecard



MAPA's Strategic Plan guides agency work and serves as a foundation for staff decision-making. A new Strategic Plan is created every five years, and the Plan is annually reviewed and updated as part of the budgeting and goal-setting process conducted each year.



View MAPA's current Strategic Plan and the Fiscal Year 2025 Plan of Work at www.mapacog.org/projects/strategic-plan/

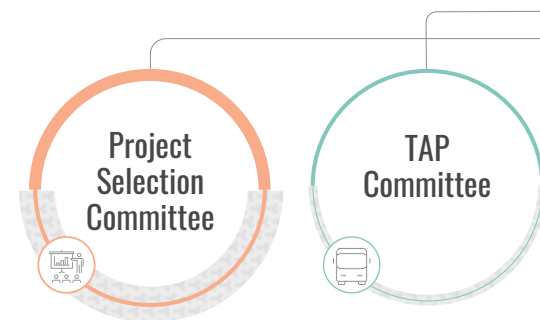
ABOUT MAPA

MAPA serves in a variety of roles throughout the region:

- Regional Council of Governments
- Metropolitan Planning Organization
- Economic Development District
- MAPA Foundation

Many committees operate internally and externally to support the work MAPA does in each of these roles. The following chart outlines MAPA's organizational structure.

Learn more about MAPA at www.mapacog.org/about/what-is-mapacog/



MAPA would like to **thank the following individuals** for sharing their time and expertise in leading MAPA's Committees for the upcoming year.



Pete Festersen, Omaha City Council
Council of Officials President



Douglas Kindig, City of La Vista
MAPA Board of Directors Chair



Carol Vinton, Mills County
Council of Officials Vice President
MAPA Board of Directors Vice Chair



Todd Pfitzer, Douglas County
Transportation Technical Advisory
Committee (TTAC) Chair



Mike Klefner, City of Papillion
Transportation Technical Advisory
Committee (TTAC) Vice Chair



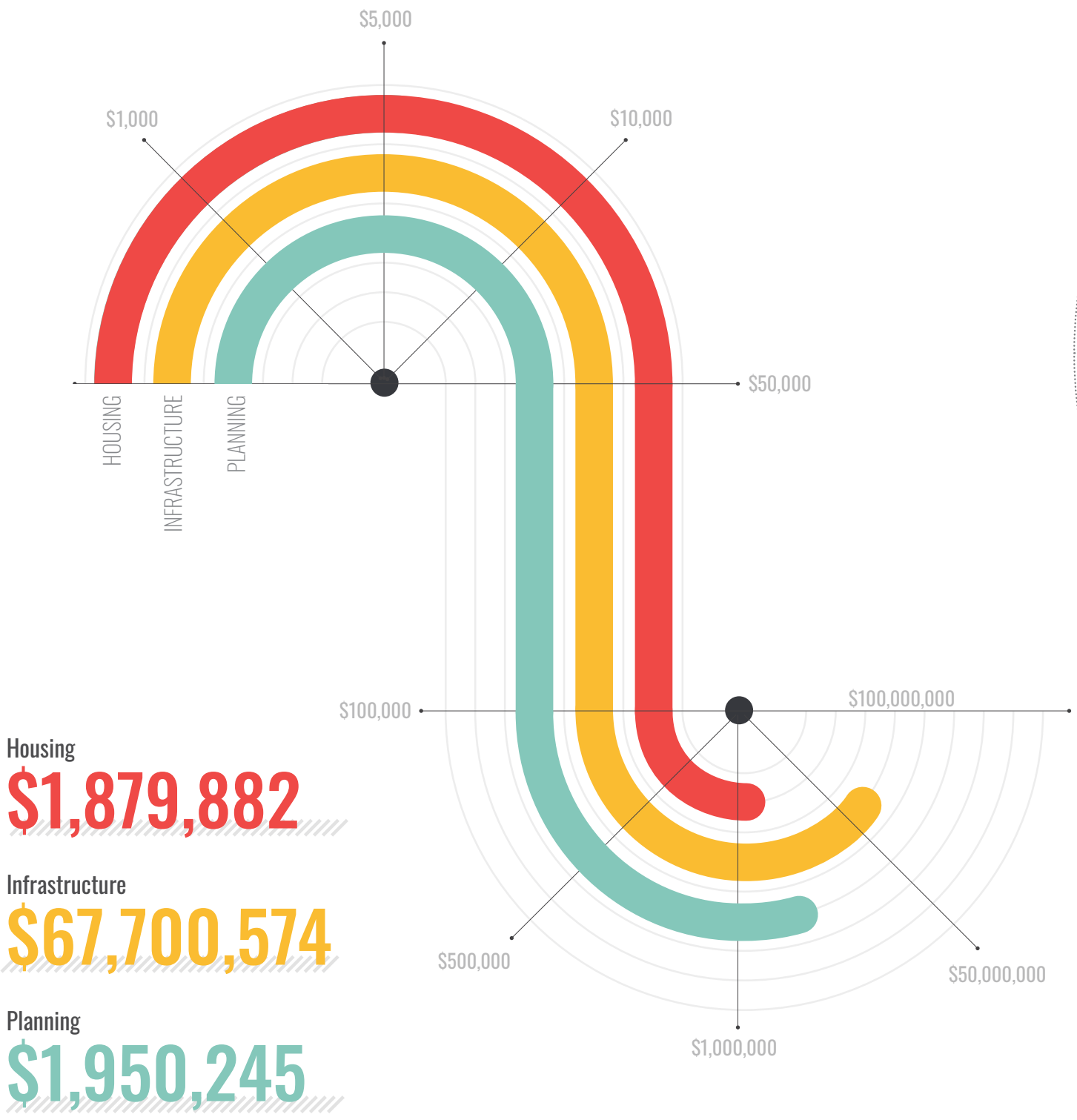
Keith Station, City of Omaha
Regional Planning Advisory
Committee (RPAC) Chair



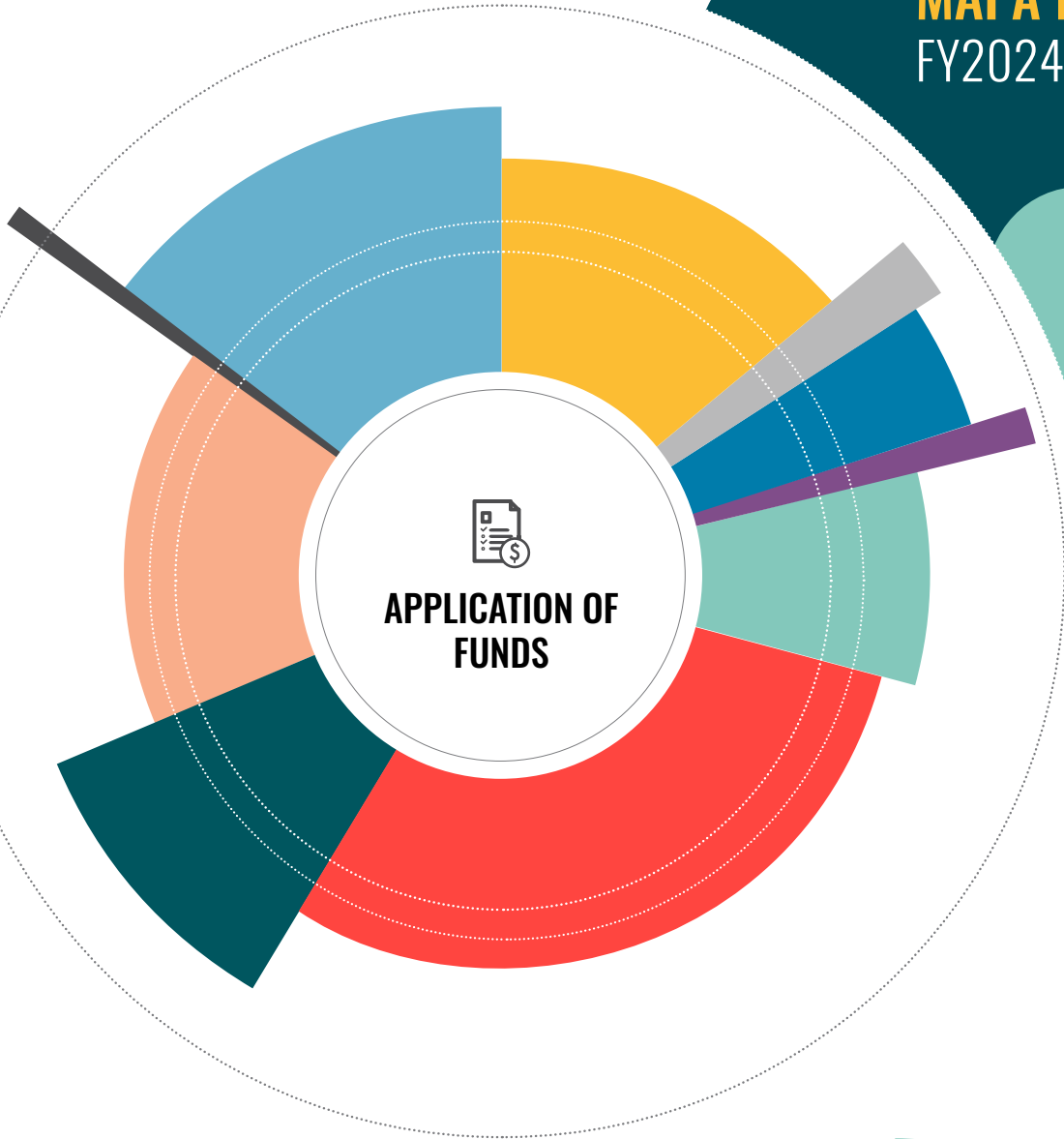
Chris Gibbons, City of Council Bluffs
Regional Planning Advisory
Committee (RPAC) Vice Chair

MAPA FY2024 SUPPORTED PROJECTS

Below is an overview of direct grant support provided by MAPA throughout FY2024. This chart combines MAPA's roles as a Metropolitan Planning Organization, Economic Development District and Council of Governments.

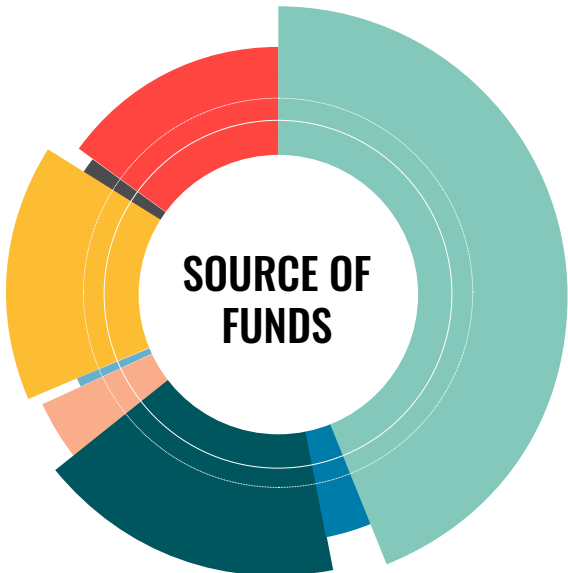


MAPA FUNDING FY2024



Transportation	14.15%
Forums	1.93%
Public Involvement	3.99%
Environment & Energy	1.29%
Heartland 2050	7.88%
Member Services	29.41%
Regional Assistance	10.02%
Management & Administrative	16.13%
Capital Outlays	0.69%
Transfers to Non-Operating	14.51%

APPLICATION OF FUNDS



Federal	44.13%
State	2.92%
Direct Support	17.24%
In-Kind Support	3.79%
Non-Member	0.66%
Fees for Service	15.18%
Miscellaneous	1.31%
Reserves & Adjustments	14.77%

SOURCE OF FUNDS

Amounts are derived from preliminary fiscal year-end financial records, which are subject to corrections prior to publication of MAPA's official annual financial statements.

Awards are given out at our Annual Meeting each October, and recognize organizations and individuals for their outstanding work in the region.

MAPA AWARDS

MAPA won the “**Building Vibrant Places**” category in the 2023 NADO photo contest with a photo of the grand opening of the FIRST AVE Trail in Council Bluffs. (Winning photo below.)

MAPA’s Communications & Outreach Team won an **Award of Merit** from the Nebraska Chapter of the Public Relations Society of America for the 2022 Annual Report.

ANNUAL AWARDS



Eric Williams
Papio-Missouri River Natural Resources District
2023 Regional Citizenship Award



Malvern Area Betterment Association (MABA)
2023 Regional Service Award



FY2024 MAPA STAFF



MICHAEL HELGERSON

Executive Director



GRANT ANDERSON

Community & Economic Development Manager



COURT BARBER

Transportation Planner & Local Projects Liaison



NATASHA BARRETT

Fiscal Analyst



JIM BOERNER

Transportation Planner



CHRISTINA BROWNELL

Director of Administration



LINDSEY BUTTON

Transportation Planner



HELEN CORRIGAN

Communications & Outreach Intern



SUE CUTSFORTH

Information Officer



MATTHEW EASH

Director of Finance



ELISE EMANUEL

Grants & Agreements Specialist



AYODELE FADOJU

GIS Analyst



BRADLEY GREFE

Community & Economic Development Planner



RACHEL GOETTSCH

Transportation Planner



MIA HASCHENBURGER

Transportation Planner



LAURA HEILMAN

Communications & Outreach Manager



SAUL LOPEZ

Communications Project Coordinator



AMANDA MORALES

Fiscal Officer



CARLOS MORALES

Transportation & Data Manager



RYAN OSSELL

Community & Economic Development Planner



JULIE SMITH

Community & Economic Development Planner



OWEN STUCKEY

GIS Coordinator



CONNIE VINER

Accountant



JODI WOOLERY

Art Director



ELIZABETH ZELLER

Administrative Assistant

Employees who contributed to FY2024 programs but are no longer employed by MAPA:

MICHAEL BLANK
Transportation Planner

RAFAEL CORRALES
Community & Economic Development Planner

JOSH CORRIGAN
GIS & IT Coordinator

TRAVIS HALM
Transportation Planner

CHARLIE HARRINGTON
Communications & Outreach Intern

SHAWNNA SILVIUS
Community & Economic Development Planner

SOLOMON AMPOFO
GIS Intern

During the past year, several MAPA staff members received promotions and MAPA added several new employees too.



NEW HIRES



PROMOTIONS

The preparation of this publication is financed through planning grants from the U.S. Dept. of Transportation through Iowa DOT and the Nebraska Department of Transportation as provided by the Federal Highway Administration, the Federal Transit Administration and the Economic Development Administration and through local funds from member jurisdictions. The views and opinions MAPA expressed herein do not necessarily state or reflect those of the U.S. Department of Transportation or the Economic Development Administration.



Metropolitan Area Planning Agency
2222 Cuming St. | Omaha, NE 68102
402.444.6866
mapacog.org