

# MOVING FORWARD




## INSIDE THIS ISSUE

Feedback collected on projects submitted for federal funding



READ ARTICLE >>

Comments sought on Amtrak Long Distance Service Study



READ ARTICLE >>

MAPA and partners host Brownfields Workshop in Treynor



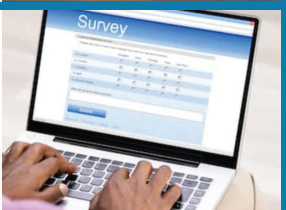
READ ARTICLE >>

Council of Officials meeting set for March 13



READ ARTICLE >>

Climate Action Webinar & Survey available



READ ARTICLE >>

NARC bids farewell to retiring Executive Director



READ ARTICLE >>

MAPA Staff Updates



READ ARTICLE >>

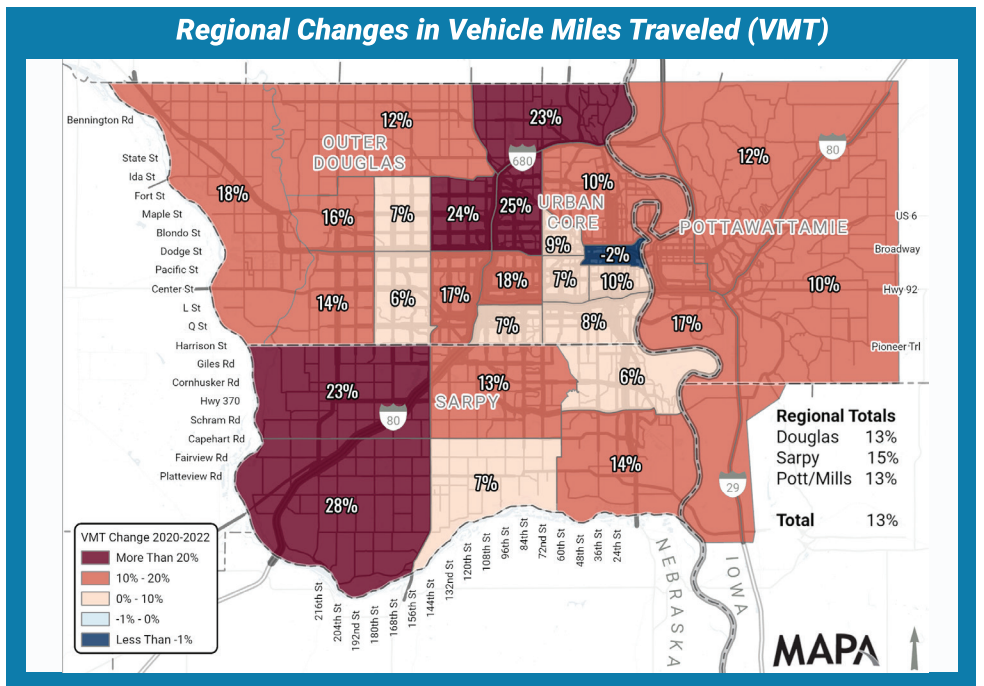
## MAPA releases its 2022 Traffic Reports

New traffic data from the Metropolitan Area Planning Agency (MAPA) show that rural areas of Sarpy County and Douglas County where development is occurring experienced the greatest increase in traffic in the Omaha-Council Bluffs metro area from 2020 to 2022. MAPA's 2022 Regional Traffic Patterns Report also shows traffic in the region increased 13.4% overall during the same period.

MAPA produces a biennial Regional Traffic Patterns Report, an analysis

of regional and sub-regional traffic patterns, in conjunction with the Traffic Flow Map, the Top Intersection Report, and the Top Interchange Report. All the reports are available at [tinyurl.com/2022TrafficRpts](https://tinyurl.com/2022TrafficRpts).

Data indicate traffic increased by 15% in Sarpy County, 13% in Douglas County and 13% in Pottawattamie and Mills Counties. Traffic in rural or exurban areas of Douglas and Sarpy Counties being developed increased between 23 to 28 percent.



continued on page 3

## Feedback collected on projects submitted for federal funding

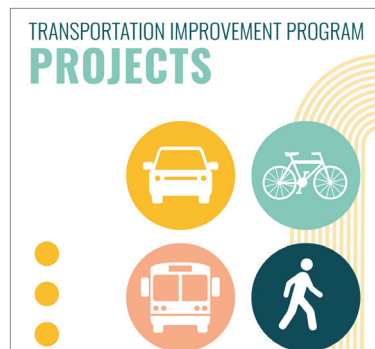
MAPA staff received more than 260 public comments on projects that MAPA and Iowa Regional Planning Affiliation (RPA)-18 are considering for federal transportation funding allocated to the region for FY2025 and beyond. The public comment period ran Feb. 1 through Feb. 29.

Project selection committees will consider the public comments when they meet in the next month to make recommendations on which projects should be programmed for federal transportation funding.

Projects submitted to MAPA's Transportation Improvement Program include those in Douglas, Sarpy, and the urbanized portion of Pottawattamie County.

The proposed projects submitted to RPA-18 cover eastern Pottawattmie, Mills, Harrison and Shelby Counties.

Projects submitted for consideration range from road improvement and trail projects to programs which address pedestrian safety and reduce environmental pollution.



## Comments sought on Amtrak Long Distance Service Study



As part of the Bipartisan Infrastructure Law passed in 2021, the Federal Railroad Administration (FRA) began the Amtrak Daily Long Distance Service Study to plan ways to establish and increase long distance intercity passenger rail connections for urban and rural communities.

Since late 2022, MAPA has participated in this national conversation to help improve and expand long distance passenger rail access.

The FRA is taking public comments until March 8 on proposed long-distance routes, one of which includes a new connection for the Omaha-Council Bluffs Metro region.

Use the comment form at [fralongdistancerailstudy.org](https://fralongdistancerailstudy.org) to submit comments.

## MAPA and partners host Brownfields Workshop in Treynor

Identifying brownfields and finding resources to help mitigate environmental contamination were some of the topics covered during an Iowa brownfields workshop presented by MAPA and several partners on Jan. 30 at the Treynor Community Center.

The workshop was designed to educate residents, economic developers and community leaders on how to identify brownfields, locate resources to address any environmental concerns, and return them to developable parcels of land.

In addition to MAPA, staff from the Iowa Department of Natural Resources (IDNR) and U.S. Environmental Protection Agency Region 7 also presented at the workshop.

Iowa residents needing guidance about potential brownfields sites should contact Mel Pins, Program Coordinator for the Iowa Brownfields Redevelopment Program at the IDNR, [mel.pins@dnr.iowa.gov](mailto:mel.pins@dnr.iowa.gov), or 515-729-4616



## Council of Officials meeting set for March 13



Mark your calendar for MAPA's next Council of Officials meeting on March 13 at the Venue at the Highlander Accelerator in Omaha. We'll hear updates on the Nebraska and Iowa legislative sessions from Joe

Kohout of Kissel, Kohout, ES Associates LLC and Jon Murphy with Principal, Cope Murphy + Co. respectively. Register at: [tinyurl.com/COO2024](https://tinyurl.com/COO2024)

## Climate Action Webinar & Survey available

There is still time to give your input for the regional climate action plan.

MAPA is working to align efforts on local, regional and statewide climate action plans. Projects and strategies included in these plans will be eligible for competitive implementation grant funding.

The U.S. Environmental Protection Agency awarded Climate Pollution Reduction planning grants to the City of Omaha and the State of Nebraska to design climate action plans.

For more information on the project, watch the **Climate Pollution Reduction Grant webinar** on **MAPA's YouTube Channel**.

Provide your feedback by taking the regional survey now: **Metropolitan Area Climate Action Plan Survey**



## NARC bids farewell to retiring Executive Director

The National Association of Regional Councils (NARC) is under new leadership. Mills County Supervisor Carol Vinton, who serves as President-Elect of the NARC Board of Directors and fellow board members bid a fond farewell to Leslie Wollack, NARC's retiring Executive Director, at the National Conference of Regions Feb. 11 through Feb. 13 in Washington, D.C.

NARC members include regional councils, councils of governments (COGs), regional planning and development agencies, Metropolitan Planning Organizations (MPOs), and other regional organizations. As a regional council of governments, regional planning and development agency, and MPO, MAPA is a member of NARC.

NARC serves as the national voice for regions by advocating for regional cooperation as the most effective way to address a variety of community planning and development opportunities and issues.

Supervisor Vinton also serves as MAPA Board of Directors Vice-Chair.



*Pictured L-R: Justin Kiel, Joy Fuchs, Carol Vinton, Leslie Wollack, Chuck Wemple, Jennifer Robinson and Ty Warner.*

*continued from MAPA releases its 2022 Traffic Reports*

All data is collected and measured by the changes in Annual Average Daily Traffic (AADT) and Vehicles Miles Traveled (VMT).

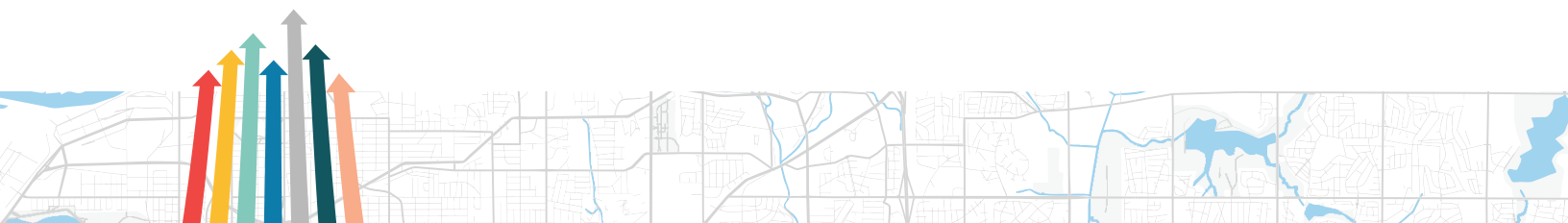
From 2020 to 2022, VMT also increased by 10% in the urban core.

"The urban core is a large employment center for the region and it is likely that a shift back to working in offices after the COVID-19 pandemic contributed to this increase," said Owen Stuckey, MAPA GIS Coordinator. "While traffic increased overall in the region between 2020 to 2022, the growth is still less than the traffic growth in 2019 before the pandemic."

90th and Dodge Streets remains the busiest intersection in the metro area with 91,000 vehicles per day followed by the intersections of 120th and L Streets and 72nd and Dodge Streets.

The Interstate 680 and Interstate 80 interchange overtook the I-480/Kennedy Freeway and I-80 interchange as the busiest interchange with 231,000 vehicles per day. The interchanges of I-480/Kennedy Freeway and I-80 and 72nd Street and I-80 rank second and third respectively.

Traffic data for the Omaha-Council Bluffs region is located on MAPA's Traffic Data Portal, [www.mapacog.org/traffic](http://www.mapacog.org/traffic).



## MAPA Staff News

We have several staff updates to share!

In late December 2023, MAPA welcomed Solomon Ampofo as the agency's new Geographic Information Systems (GIS) Intern. Originally from Ghana, Solomon is a graduate student at University of Nebraska Omaha and is studying for his Master's degree in GIS.



Congratulations to Owen Stuckey for being promoted to GIS Coordinator. Owen brings extensive drone, Geographic Information Systems, mapping, and leadership skills to this role. He was promoted after Josh Corrigan, MAPA's former GIS Coordinator, left in January to pursue a position with the Omaha District of the U.S. Army Corps of Engineers.

At January's Board of Directors meeting, Grant Anderson, MAPA Community & Economic Development Manager, and Sue Cutsforth, MAPA Information Officer, were recognized for their work anniversaries. Grant celebrates 15 years with the agency, while Sue celebrates 10 years.



We also congratulate Transportation Planners Court Barber and Jim Boerner who were promoted to Planner III in late January. Thank you for your work in support of MAPA's projects and plans.



## CALENDAR

### MARCH 2024

- 12** RPA-18  
11:00 a.m.
- 13** Council of Officials
- 20** Finance Committee  
8:30 a.m.
- 22** Transportation Committee  
10:00 a.m.
- 28** MAPA Board of Directors  
1:30 p.m.

### APRIL 2024

- 05** Regional Planning (Heartland 2050 RPAC)  
10:00 a.m.
- 09** RPA-18  
11:00 a.m.
- 16** Coordinate Transit  
10:30 a.m.
- 17** Finance Committee  
8:30 a.m.
- 19** Transportation Committee  
10:00 a.m.
- 25** MAPA Board of Directors  
1:30 p.m.

