

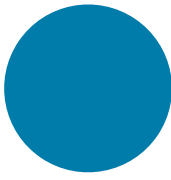


2023 MAPA ANNUAL REPORT

# CONNECTIONS



# 2023





*Douglas Kindig*

**Mayor Doug Kindig**

MAPA Board of Directors Chair



*Pete Festersen*

**Councilmember Pete Festersen**

MAPA Council of Officials President

Earlier this year the MAPA Board of Directors worked with MAPA's leadership team and a trained facilitator to develop a new Strategic Plan to guide the agency's work during the next five years.

This strategic plan included a vision for the Omaha-Council Bluffs Metropolitan Area Planning Agency's work and focus:

**Administrative Excellence and Mission Focus:** MAPA will prioritize investments in staff and tools to operate the agency efficiently and effectively in service of our mission and members.

**Community Partnership and Intentional Engagement:** MAPA will continue proactive, inclusive community and stakeholder engagement in its planning process.

**Responsive and Proactive Member Services:** MAPA staff will continue to support community needs and work to identify new or emerging issues throughout the region.

**Collaborative Leadership as a Trusted Convener:** MAPA will continue to work as a trusted partner in local decision-making, and use its unique resources to support collaborative regional solutions.

**Solutions-Focused Planning:** MAPA will support its members through planning and project development with a focus on leveraging local investments.

Throughout this next year, MAPA is implementing this vision to increase our connections with you as your committed partner in helping the region move forward by building vibrant communities with a high quality of life for all.

Fiscal Year 2023 marked the end to our agency's first five-year Strategic Plan and the beginning of the next chapter of our work in service of communities here in the Omaha-Council Bluffs metropolitan area. I'm grateful for the bold vision articulated by our Board of Directors and the insights of staff as we translated that action into the framework for our new 2024-2028 Strategic Plan. This document will help guide our team's efforts over the coming years.

I'm excited to present this year's annual report **Connections**. Whether it's connecting communities to the resources they need to complete a project, planning for the infrastructure connections between neighborhoods and communities, or working to ensure residents and businesses are connected through high-speed internet, connectivity is a central theme of our work here at MAPA. A more connected region is a more vibrant and resilient region, and one that supports the quality of life of everyone.

We've continued to work closely with partners old and new to identify and deliver key projects throughout the region during the past year. Significant planning studies like the **Highway 75 Corridor and Freight Study** and **Sarpy County I-80 Interchange Planning and Environmental Linkages Study** were completed during the last 12 months. Furthermore, MAPA facilitated the

**final property buyouts in Pottawattamie County and Pacific Junction**, completing the final step in the immediate recovery from the 2019 floods. The work to facilitate the next phases of these efforts continues, but we reached significant milestones on these projects in FY2023.

New opportunities available through the **Bipartisan Infrastructure Law** and **Inflation Reduction Act** make the collaborative work of planning for the current and future needs throughout the region more important than ever. Our team has spent the last year exploring many of these opportunities with local agencies, regional organizations, and state partners. That work will continue in the next year as MAPA works to connect our communities to the resources they need to make key investments in infrastructure, housing and resiliency.

I'm humbled by the opportunity to lead this agency and support the success of all our members and partners across the region and look forward to continuing our work together in the next year.

With gratitude,



MIKE HELGERSON • EXECUTIVE DIRECTOR







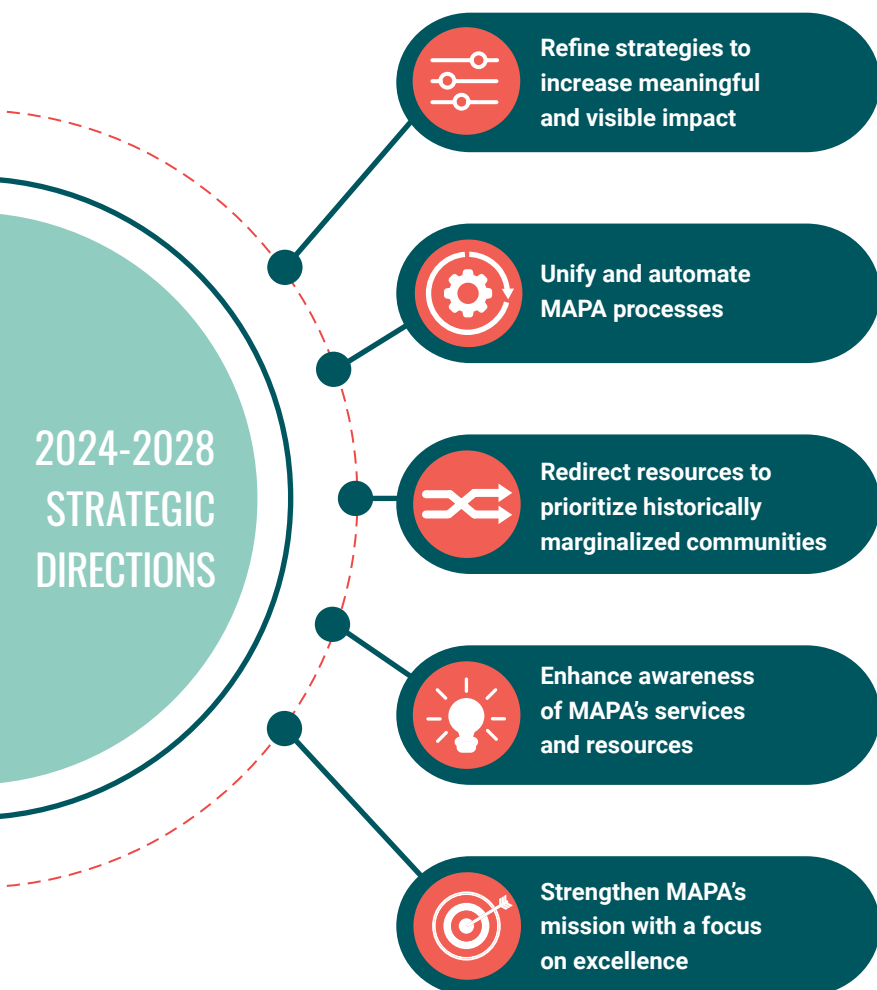
MAPA's 2024-2028 Strategic Plan **guides the agency's work and serves as a foundation** for decisions made by staff.

Earlier this year the MAPA Board of Directors worked with MAPA's leadership team and a trained facilitator to develop a new Strategic Plan to guide the agency's work during the next five years.

The plan outlines strategic directions and includes a detailed plan of work for Fiscal Year 2024.

A new strategic plan is created every five years, with an annual update to include the plan of work for the upcoming fiscal year.

MAPA's 2024-2028 Strategic Plan can be found at [mapacog.org/about/what-is-mapa](https://mapacog.org/about/what-is-mapa)





## FEDERAL CERTIFICATION REVIEW

As the designated Metropolitan Planning Organization (MPO) for the greater Omaha-Council Bluffs metropolitan area, MAPA undergoes a Federal Certification Review every four years. During this process, the Federal Highway Administration and the Federal Transit Administration review MAPA's transportation planning process and verify that the MPO is complying with federal regulations.

MAPA received several commendations during the 2022 review. They include:

- **Leadership at Iowa DOT Regional Planning Association and MPO quarterly meetings** by routinely presenting on proactive planning and regional coordination efforts.
- Regional leadership through a **versatile and responsive public participation process with a large variety of visualization techniques** that lead to clear and concise documents shared with the public and stakeholders.
- **Block Talks (walk audits) expansion** to create a framework which will be a default for the development of future projects.
- Inclusion of an **Equity Analysis as it relates to selection of safety projects and the development of the safety report.**
- **Board approval of the Equity resolution and Equity goals** to ensure equity and nondiscrimination in MAPA's planning processes, programs, and activities as a recipient of Federal financial assistance.
- **Visualization techniques, branding, and story maps in the public participation process**, as well as writing clear and concise documents.

MAPA would like to **thank the following individuals** for sharing their time and expertise leading MAPA Committees for the upcoming year.



**Pete Festersen**, Omaha City Council  
Council of Officials President



**Douglas Kindig**, City of LaVista  
MAPA Board of Directors Chair



**Carol Vinton**, Mills County  
Council of Officials Vice President  
MAPA Board of Directors Vice Chair



**Todd Pfitzer**, Douglas County  
Transportation Technical Advisory  
Committee (TTAC) Chair



**Mike Kleffner**, City of Papillion  
Transportation Technical Advisory  
Committee (TTAC) Vice Chair



**Keith Station**, City of Omaha  
Regional Planning Advisory  
Committee (RPAC) Chair



**Chris Gibbons**, City of Council Bluffs  
Regional Planning Advisory  
Committee (RPAC) Vice Chair



**\$1.5  
MILLION**

**\$2 MILLION**

**155 JOBS**

**\$345 MILLION**

MAPA obtained a **\$1.5 million waterline expansion grant** awarded by the U.S. Economic Development Administration (EDA) for Blair's biocampus.

The grant, combined with **\$2 million in local matching funds**, is expected to create an estimated **155 jobs** and generate **\$345 million in private investment** at the biocampus facility.

# IMPACT

## BLAIR PROJECTS

Acting as an extension of local staff, MAPA secures and administers funding for projects which boost economic growth, community connections and vibrancy and quality of life.



### Workforce Housing

Blair's workforce housing project has completed thirteen single-family homes with four additional units currently under construction. Funding secured through the Nebraska Department of Economic Development and Nebraska Investment Finance Authority helped finance home construction. MAPA administers the Blair Rural Workforce Housing Fund.



### Brownfields Assessment

MAPA participated in the Dana College Campus Brownfields assessment with Angels Share, Inc. The non-profit created Dana Suites, a former campus residence hall converted to efficiency apartments for teens aging out of foster care, with a \$420,000 loan from MAPA's Revolving Loan Fund.



### Blair South Bypass Project

Construction is underway on Blair's South Bypass project. Once completed, it will redirect heavy truck traffic from Blair's downtown, allowing for increased safety for residents and increased community vibrancy. MAPA secured and is administering a BUILD grant from the U.S. Department of Transportation for the project.



## TRAINING EVENTS FOR LOCALS

MAPA connected with its partners and communities through multiple training opportunities in the past year.

- **Complete Streets training:** Educate community leaders about multimodal transportation safety
- **Safe Systems Approach to the Road Safety Audit process:** Training local officials on transportation safety
- **Brownfields Workshop:** Educated community leaders on ways to transform potentially contaminated properties
- **Urban and Community Forestry:** Coordinated and supported grant applications for new federal funding program
- **Iowa Zoning and Planning:** Workshop with ISU Extension on basics of zoning and planning for community leaders
- **Henderson Grant Writing Workshop:** Grant writing fundamentals for city staff and community volunteers in Mills County
- **Nebraska Municipal Clerks Academy and Institute:** Training on grant writing fundamentals and project planning for clerks and local officials



## COMMUNITY NEEDS ASSESSMENT MODEL PILOTED IN VALLEY, NE

MAPA's Community & Economic Development staff completed the first test of a new Community Needs Assessment model with residents of Valley, Nebraska.

Working directly with Mayor Cindy Grove and a Community Collaboration Group, MAPA supported the deployment of a community survey. The survey was designed to get feedback from residents about their needs, wishes and concerns to guide local planning decisions. Two-hundred ninety households responded to the survey, representing more than 900 people or almost 1/3 of Valley residents. MAPA then facilitated a town hall with residents to share survey results and develop next steps.

Reach out to MAPA staff if you are interested in completing a Community Needs Assessment or other planning process in your community.



## REVOLVING LOAN FUND ESTABLISHED

In July 2022, MAPA connected with the Nebraska Enterprise Fund to partner on the Small and Micro Businesses Revolving Loan Fund. The revolving loan fund was established to help locally-owned start-up businesses and existing businesses in MAPA's six-county region that were impacted by COVID-19 and are seeking to expand.

THIS PARTNERSHIP RESULTED IN

 **12 LOANS FUNDED**  
FOR A TOTAL OF

**\$1,155,889.01**



**35 JOBS RETAINED & 100 NEW JOBS CREATED**



## HEALTH & WELLNESS PILOT IN COUNCIL BLUFFS

In early 2023, MAPA hosted a set of meetings with community stakeholders in Council Bluffs to better understand the city's health and wellness needs for a pilot program offered through the Iowa Department of Health and Human Services.

Council Bluffs was one of only four communities across the state of Iowa to test this new program. Participants from various health-related organizations first completed a health and wellness asset map of the community, then came back to complete a needs assessment which outlined gaps in existing services.

This process resulted in a list of action items stakeholders would like to implement to help improve the health and wellness of Council Bluffs residents. After completing the pilot, Council Bluffs will receive **\$60,000** over three years to implement health- and wellness-related projects in the community.



## SAFE STREETS FOR ALL

From 2017 to 2021, the MAPA region experienced a higher rate of non-motorist fatalities than either the Nebraska or Iowa state averages, with a disproportionately high impact on disadvantaged communities.

The USDOT's "Safe Streets and Roads for All" grant program awarded MAPA **\$750,000** to improve traffic safety by developing a Comprehensive Safety Action Plan for the Nebraska counties in the MAPA region and western Pottawattamie County cities of Council Bluffs, Carter Lake, Crescent and McClelland. This plan will identify projects and





Disadvantaged communities make up **13%** of the region's population. **They experience:**

**20%**  
of the total traffic fatalities on all roads

**43%**  
of the pedestrian fatalities on local roads

policies to improve safety on local roads. Development of the plan is expected to get underway in 2024.

MAPA has applied for a second grant with Southwest Iowa Planning Council to develop a safety action plan for the counties in Iowa's Regional Planning Affiliation-18 (eastern Pottawattamie, Mills, Shelby and Harrison Counties).

## WEST NISHNABOTNA WATERSHED

Work wrapped up in August 2022 on projects designed to stabilize and preserve the West Nishnabotna River Watershed.

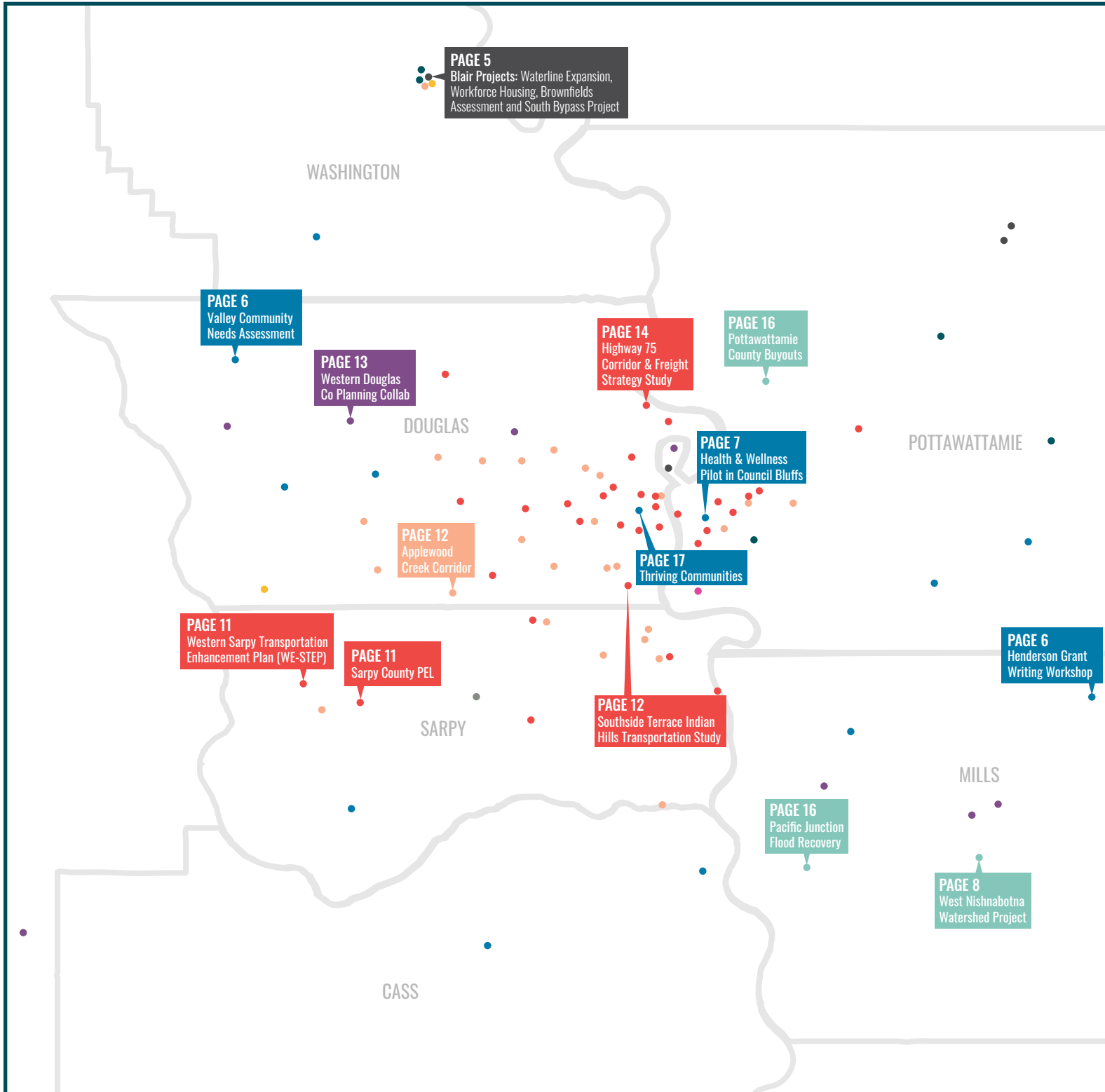
The watershed, a tributary of the Missouri River, is used heavily for recreation and tourism. It provides many historic and cultural resources, including the only state-designated water trail in Southwest Iowa.

The West Nishnabotna River Watershed Project represents a total investment of more than **\$2.6 million** in 36 practices. MAPA provided grant administration and oversight for the project.



From high in the sky, **MAPA's drone services** capture a big picture, bird's eye view of many projects, neighborhoods and events. MAPA's latest drone photography captured footage of new transit projects, Gene Leahy Mall redevelopment and the community of Eagle, Nebraska. Scan the QR code or visit [mapacog.org/drone](http://mapacog.org/drone) to learn more about capturing drone images for your community or event!

# REGIONAL PROJECT LIST





## COMMUNITY DEVELOPMENT

Brownfields Workshop  
 Carson CITIES - Park Concession Stand Improvements  
 Grants Workshop (Henderson, Mills County)  
 Health and Wellness Pilot in Council Bluffs  
 Thriving Communities  
 Treynor CITIES - Park Improvements  
 Urban Agriculture Zoning  
 Vallley Community Needs Assessment

## DISASTER RECOVERY

Council Bluffs Levee Repairs  
 Oakland HMGP & CDBG Property Buyouts  
 Pacific Junction HMGP & CDBG Property Buyouts  
 Pottawattamie County HMGP & CDBG Property Buyouts  
 West Nishnabotna Watershed - Disaster Resilience

## ECONOMIC DEVELOPMENT

Blair CDBG Reuse Economic Development Loan - Holiday Inn Express  
 Economic Development Organization Funding  
 EDA CARES Act Revolving Loan Fund - Nebraska Enterprise Fund  
 Plattsmouth CDBG Economic Development Loan - Vireo

## HOUSING

Blair Rural Workforce Housing Fund  
 Dana Suites Adaptive Reuse  
 Iowa Workforce Development Housing Inspections  
 Pottawattamie County Housing Trust Fund

## INFRASTRUCTURE

Avoca CITIES - Residential Subdivision Infrastructure  
 Blair Nuclear Closure Communities Grant - Water Main Installation  
 Carter Lake CDBG Sewer Improvements  
 Neola CITIES - Wastewater System Improvements  
 Neola CITIES - Water Utility System Upgrades  
 Union (Cass Co) Storm Siren Acquisition and Installation

## PLANNING

Carson Strategic Plan Update  
 Carter Lake Comprehensive Plan  
 East Mills SWITCH  
 EDA/Invest NE Build Back Better Regional Challenge - Heartland Robotics  
 Mills County Hazard Mitigation Plan update  
 Mills County M&P Levee Accreditation Study  
 Omaha Natural Surface Trails Feasibility Study  
 Western Douglas County Planning Collaborative

## GIS

Drone Image Library

## TRANSIT/TRANSPORTATION

24th Street Corridor Study RAISE Grant  
 Bellevue Bridge Study Implementation  
 City of Omaha Beltline Study (FY23)  
 ConnectGO Getting to Work Survey  
 Fort Crook Road Corridor Study  
 Highway 75 Corridor and Freight Study  
 La Vista Bicycle and Pedestrian Master Plan (FY23)  
 MAPA Zoning Atlas  
 Neighborhood Expanded Access to Trails Study (NEAT)  
 Omaha Bicycle-Pedestrian Master Plan  
 Sarpy County I-80 Planning and Environmental Linkages Study (PEL)  
 Southside Terrace/Indian Hills - Transportation Study  
 Western Sarpy Transportation Enhancement Plan WESTEP (FY23)

## FEDERAL

168th Street - West Center Road to Q Street City of Omaha  
 36th Street Phase II  
 42nd and D Viaduct  
 72nd & Ames Transit Access & Pedestrian Amenities  
 72nd & D Street Viaduct  
 Applewood Creek Trail City of La Vista  
 Blair South Bypass Project  
 Carter Lake Trail Project  
 City/County Connector Trail  
 Cornhusker Road - 36th Street to Fort Crook Road Corridor Study  
 Cuming St/ NW Radial Hwy/ Military Ave Corridor Study  
 East Beltway: Stevens Road - West Segment - Council Bluffs  
 Gretna to Wehrspann Trail  
 North Downtown Riverfront Pedestrian Bridge  
 Omaha Roundabout Program  
 Omaha Urban Core Street Reconfiguration Study  
 Pottawattamie County Multi-Use Trail - Phase 1  
 Safe Streets and Roads for All (SS4A)  
 Schram Spur N-370 Undercrossing and Trail Segment  
 Signal Infrastructure City of Omaha  
 South Expressway Reconstruction - Phase 1  
 South Expressway Trail, Phase I  
 Systemic Safety FHWA/NDOT/City of Omaha MAPA - NW Radial  
 US Highway 34 Bike and Walking Trail Phase 2  
 W Graham Ave Reconstruction  
 West Maple from I-680 to US 275  
 West Papio Trail - Millard Connection





# CONNECTION

## SARPY COUNTY I-80 PEL STUDY

Completed in February, the Sarpy County I-80 Planning & Environmental Linkages (PEL) Study identified **192nd Street and Capehart Road** and **168th Street and Schram Road** as potential locations for a new Interstate 80 interchange in Western Sarpy County.

This planning study determined a new interchange would help mitigate traffic congestion at the I-80 interchanges at N-31 and N-370, accommodate future growth and development, provide regional connectivity to I-80 and accommodate regional freight traffic. The study also recommended selection criteria and a process for selecting the final interchange location.

MAPA led the study in partnership with Sarpy County and the cities of Papillion and Gretna. Find the final study at [mapacog.org/projects/i80pel](https://mapacog.org/projects/i80pel)

## WESTERN SARPY TRANSPORTATION ENHANCEMENT PLAN (WE-STEP)

To build on the Sarpy County I-80 Planning & Environmental Linkages (PEL) Study, MAPA is partnering with Gretna, Springfield, Papillion and Sarpy County on the Western Sarpy Transportation Enhancement Plan (WE-STEP).

WE-STEP aims to unify future road improvements and coordinate future transportation network, land use planning and development decisions in this area of anticipated future growth. The plan will also work to enhance transportation safety, provide transportation options, support future development, and relieve traffic congestion.

The WE-STEP project is funded by the Heartland 2050 Mini-Grant program.



## MAKING CONNECTIONS WITH MINI-GRANTS

First awarded in 2018, the **Heartland 2050 Mini-Grant Program** is a set-aside of approximately \$300,000 of MAPA's Regional Surface Transportation Block Grant (STBG) Program funding. The program provides local jurisdictions with technical and financial assistance to create livable communities and move the Heartland 2050 Vision forward, and has already had major impacts.

The Papio-Missouri River Natural Resources District recently completed the first phase of its **Neighborhood Expanded Access to Trails (NEAT)** program. This effort was awarded a Heartland 2050 Mini-Grant in 2021 and analyzed the feasibility of

small but transformative connections between the regional trail system and neighborhoods throughout the region.

In 2021, MAPA awarded a Mini-Grant to the City of Omaha for a **multi-modal transportation study for the Southside Terrace Apartments and Indian Hills Neighborhood**. This study informed the transportation portion of the neighborhood's Transformation Plan, which led to a \$50 million grant award from the U.S. Department of Housing & Urban Development and \$199 million in additional funding to implement the plan.

MAPA's planning process continues to prioritize active transportation investments throughout the region. The **Applewood Creek Corridor**, a trail connection in La Vista and Papillion, opened in August. It was funded through MAPA's Transportation Alternatives Program (TAP) program.





# COLLABORATION

## PLANNING COLLABORATIVE SEEING RESULTS

The Western Douglas County Planning Collaborative is a partnership between MAPA, Douglas County and the Cities of Bennington, Valley and Waterloo. The collaborative was formed in 2021 and meets quarterly to discuss shared challenges and identify community needs and potential resources. To date, MAPA has facilitated in-depth conversations about housing, housing affordability, development and multi-use trails to determine needs and connect community leaders to available resources.

Projects prioritized through the Planning Collaborative are now moving ahead.

Douglas County is leading the development of an **addendum to the City of Omaha's Housing Affordability and Action Plan** to identify needs, trends and priorities for housing affordability in the remainder of Douglas County outside of the City of Omaha, focusing on the cities in the planning collaborative.

In addition, two major trail-related grant applications were funded by the Nebraska Department of Transportation's Transportation Alternatives Program (TAP) in 2023.

The Papio-Missouri River Natural Resources District and Douglas County were awarded **\$6.67 million** for a free standing bike and pedestrian bridge across the Elkhorn River just south of Maple Street. This project is a key investment to link western Douglas County to the existing trail system throughout the region.

Douglas County was awarded **\$2.5 million** for two trail segments around Waterloo. These projects would help meet goals of the Western Douglas County Trail Plan.



Seeing the need for funding in the communities we serve, in 2023 MAPA worked with the Nebraska Department of Transportation to ensure communities within MAPA's Transportation Management Area (TMA) were eligible for statewide TAP funding. These efforts resulted in significant grant awards for MAPA's members—**advancing several regionally significant trail projects.**



## HIGHWAY 75 STUDY

MAPA wrapped up its Highway 75 Corridor and Freight Strategy Study. The final report identifies four potential alternatives for a new roadway alignment that would divert heavy truck traffic and alleviate some negative neighborhood impacts along Highway 75 in northeast Omaha. The study was funded through a direct appropriation from the Nebraska Legislature and MAPA's Metropolitan Planning (PL) funding.

Highway 75, known locally as North 30th Street in northeast Omaha, carries between 15,000 and 20,000 vehicles per day. Four to six percent of those trips involve heavy trucks.

At the beginning of the study, MAPA identified a total of nine potential alternatives and evaluated them against the study's goals of mobility, safety, accessibility, freight movement, neighborhood quality and economics. Extensive stakeholder and public involvement narrowed the list of potential options that were carried forward by the study.

### Identified Alternatives

- **30th Street Complete Street Enhancements** – Change to three lanes, one through-lane each direction with center turn lane, add curb bump outs
- **Diverting truck traffic to Pershing Drive** between 28th Street to 28th Avenue, have one through-lane each direction with center turn lane
- Building a **16th Street river crossing** for truck traffic with two through-lanes each direction and center turn lane or median-divided with left turn lanes
- Building a **Pershing Drive river crossing** with two through-lanes each direction and center turn lane or median-divided with left turn lanes
- Making **no changes** to the Highway 75/North 30th Street corridor

Find the final report of the Highway 75 Corridor and Freight Strategy Study at [mapacog.org/reports/highway-75-corridor-freight-strategy-study/](https://mapacog.org/reports/highway-75-corridor-freight-strategy-study/)



## REGIONAL CLIMATE ACTION AND RESILIENCE PLAN

The City of Omaha has started the development of a Climate Action and Resilience Plan. Due to be complete in June 2024, this plan will establish clear targets, goals and strategies that serve as a **roadmap for Omaha to equitably achieve and exceed climate action and resilience goals**. The development of this plan was highlighted as a priority by the Metro Smart Cities collaborative group, which includes MAPA, and MAPA serves on the plan's steering committee.

The City of Omaha's efforts will receive a **\$1 million** boost from the U.S. Environmental Protection Agency Climate Pollution Reduction Grant (CPRG) program. This Inflation Reduction Act funding will support the City of Omaha's plan as well as the development of a **regional Climate Action and Resilience Plan**. MAPA submitted a letter in support of Omaha's application and will partner on the regional plan, working to coordinate the plan with regional partners and supporting public engagement and stakeholder outreach throughout the region.

With a Climate Action and Resilience Plan in place, the City and/or partners will be eligible to apply for EPA CPRG Phase 2 grant funds to implement plan recommendations.



# RESILIENCE

## BUILD BACK BETTER CHALLENGE

The Heartland Robotics Cluster started in 2021 with a vision to make Nebraska a leader in robotic technologies and advanced manufacturing automation targeting the agricultural industry. The project was awarded a **\$25 million Build Back Better Challenge grant** from the U.S. Economic Development Administration to build out the critical entrepreneurial and innovation infrastructure needed to accelerate the development of robotic and automation technologies.

The Heartland Robotics Cluster believes that developing a collaborative approach to labor productivity in agriculture and manufacturing will grow Nebraska's economy in the long run.

Led by Invest Nebraska, this project involves several regional partners including MAPA. Find out more at [heartlandroboticscluster.com](https://heartlandroboticscluster.com)

### PACIFIC JUNCTION BUYOUTS COMPLETE

Since the 2019 Spring floods, MAPA has worked with the City of Pacific Junction to assist homeowners, whose homes were ravaged by the floodwaters, to navigate the long process of recovery. In 2023, MAPA assisted with final property acquisitions and oversaw remaining demolitions, bringing this work to a close.

MAPA staff continue to work with community leaders to identify how the agency can support the next steps in the recovery process.



### POTTAWATTAMIE COUNTY BUYOUTS COMPLETE

In 2022, MAPA secured funding for the **acquisition and demolition** of homes in northeastern Pottawattamie County built in floodplains. This work is now complete, with a total of eleven properties acquired and cleared.



# EQUITY

## THRIVING COMMUNITIES

A technical assistance grant awarded to the City of Omaha, MAPA and Spark CDI will support work to study the impacts of Highway 75 on North Omaha and how to reconnect the community separated by this infrastructure project.

When it was built, Highway 75 separated the historically Black community of North Omaha, displaced families and businesses, and destroyed buildings central to the daily lives of residents.

The goal of the Thriving Community Program is to help ensure communities have the technical tools and organizational capacity to plan for and deliver quality infrastructure projects and community development projects that enable their communities and neighborhoods to thrive.

For more information about the project or how to get involved, contact Carlos Morales, MAPA Transportation & Data Manager.



## ANNUAL EQUITY ASSESSMENTS

In June 2020, the MAPA Board of Directors adopted an Equity Resolution in order to increase equitable outcomes in our region through MAPA's work. The annual Equity Assessment is a direct outcome of the resolution and scores MAPA's work in each of the eight action items included in the resolution.

Find the resolution and annual assessments at [mapacog.org/projects/equity-assessment](https://mapacog.org/projects/equity-assessment)

# EQUITABLE DEVELOPMENT SCORECARD PUBLISHED



Working with partners throughout the region, Heartland 2050's Equity & Engagement Committee finalized the Equitable Development Scorecard for local use. The scorecard was informed by significant stakeholder and public involvement to make it a useful tool to support decision-making at the local level.

Any community member can use the scorecard to score an actual or proposed development project on equity-related criteria in five categories: Community Engagement, Housing, Transportation, Economic Development and Land Use.

Anyone can request a presentation about the scorecard by contacting MAPA staff.

View or download the scorecard at: [heartland2050.org/scorecard](http://heartland2050.org/scorecard)



## REGIONAL EQUITY TOOLBOX

MAPA developed a new tool to help agencies and community partners make more equitable programming and funding decisions.

MAPA's Regional Equity Toolbox serves as a quick reference for common equity indicators across the Omaha-Council Bluffs region.

Tabs allow users to view individual demographic concentrations throughout the region that are combined to create MAPA's Equity Focus Areas—a scoring matrix that identifies areas that may be impacted disproportionately by gaps in transportation such as safety and accessibility.

This free toolbox can also assist non-profit and governmental organizations in locating census tracts that qualify for various state and federal government grant programs.

Access the Regional Equity Toolbox:

[mapacog.org/equity](http://mapacog.org/equity)

## DIGITAL EQUITY PLAN

In an effort to bridge the digital divide, the federal Infrastructure Investment and Jobs Act provided funding to states, through the Digital Equity Act, to develop their own Digital Equity Plans.

As one of the Nebraska's Economic Development Districts, MAPA worked with 50 stakeholders on the **Regional Digital Equity Planning Committee** in seven public meetings from March through August to develop a Digital Equity Plan for Washington, Douglas, Sarpy and Cass Counties.

The Digital Equity Plans created by each Economic Development District will be incorporated into the State of Nebraska's Digital Equity Plan.

The work done will inform digital equity planning in Pottawattamie and Mills Counties too.

The plan included a data summary of current broadband access and needs and an asset inventory.



# ORGANIZATION

## MAPA COMMUNITY DEVELOPMENT PROJECTS **FY2023**

Trails  
**\$72,590**



Hazard Mitigation  
**\$3,230,519**



Economic Development  
**\$13,739,228**



Planning  
**\$2,723,934**



Housing  
**\$2,233,703**

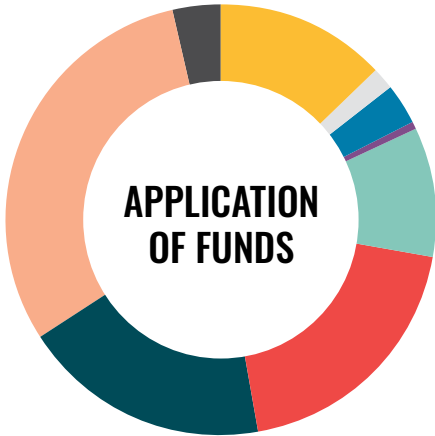


Infrastructure  
**\$25,148,135**

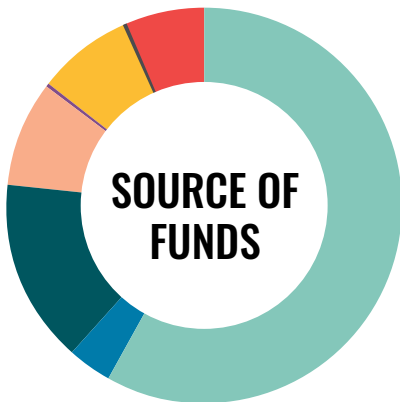




# MAPA FUNDING FY2023



Transportation	12.9%
Forums	1.6%
Public Involvement	3.2%
Environment & Energy	0.6%
Heartland 2050	9.7%
Member Services	19.3%
Regional Assistance	18.5%
Management & Administrative	30.6%
Cash Reserves	3.5%



Federal	58.2%
State	3.5%
Direct Support	15.2%
In-Kind Support	8.6%
Non-Member	0.1%
Fees for Service	7.8%
Miscellaneous	0.2%
Reserves & Adjustments	6.4%

Amounts are derived from preliminary fiscal year-end financial records, which are subject to corrections prior to publication of MAPA's official annual financial statements.



From bake-offs to mini-retreats, MAPA's Social Office Squad (S.O.S.) planned and organized several staff team-building activities during the year.

## PROFESSIONAL DEVELOPMENT FOR STAFF DURING THE PAST FISCAL YEAR:

**15** STAFF MEMBERS & **1** BOARD MEMBER

**ATTENDED**

**23** CONFERENCES, WORKSHOPS & TRAININGS IN

**15** CITIES



## ANNUAL AWARDS

MAPA's Annual Awards recognize individuals and organizations for their outstanding work in the region.



**Korrena Neppi**  
City Clerk for Pacific Junction, Iowa  
2022 Regional Citizenship Award



**Front Porch Investments**  
2022 Regional Service Award



**David Brown**  
Retired President and CEO of  
the Greater Omaha Chamber  
2022 Award of Merit

## MAPA AWARDS

MAPA and its staff won several awards during the past year.

**Rafael Corrales, Community & Economic Development Planner, won the Prometheus Award from the Iowa Council of Governments.** The Prometheus Award is given to a staff member at one of Iowa's Councils of Government who was instrumental in making progress in a community project or endeavor. Rafael (pictured below) was recognized for his work helping Pacific Junction residents, whose homes were ravaged by the 2019 floods, through the home buyout process.

The **Communications & Outreach Team won three Awards of Merit** in December 2022 from the Public Relations Society of America, Nebraska Chapter. Projects receiving awards include the MAPA 2021 Annual Report, MAPA's bi-monthly newsletter "Moving Forward" and the Heartland 2050 Baby Steps Giant Leaps Video.

**MAPA also won the "Building Vibrant Places" category in the 2022 National Association of Development Organizations photo contest.** The winning photo (pictured left) was taken by MAPA intern Isabelle Fleming and features the redeveloped Gene Leahy Mall on opening weekend.



# FY2023 MAPA STAFF



**MICHAEL HELGERSON**  
Executive Director



**GRANT ANDERSON**  
Community & Economic Development Manager



**COURT BARBER**  
Transportation Planner & Local Projects Liaison



**NATASHA BARRETT**  
Fiscal Analyst



**MICHAEL BLANK**  
Transportation Planner



**JIM BOERNER**  
Transportation Planner



**CHRISTINA BROWNELL**  
Director of Administration



**LINDSEY BUTTON**  
Transportation Planner



**RAFAEL CORRALES**  
Community & Economic Development Planner



**JOSH CORRIGAN**  
GIS & IT Coordinator



**SUE CUTSFORTH**  
Information Officer



**MATTHEW EASH**  
Director of Finance



**BRADLEY GREFE**  
Community & Economic Development Planner



**RACHEL GOETTSCH**  
Transportation Planner



**TRAVIS HALM**  
Transportation Planner



**CHARLIE HARRINGTON**  
Communications & Outreach Intern



**LAURA HEILMAN**  
Communications & Outreach Manager



**SAUL LOPEZ**  
Communications Project Coordinator



**AMANDA MORALES**  
Fiscal Officer



**CARLOS MORALES**  
Transportation and Data Manager



**RYAN OSSELL**  
Community & Economic Development Planner



**SHAWNNA SILVIUS**  
Community & Economic Development Planner



**JULIE SMITH**  
Community & Economic Development Planner



**OWEN STUCKEY**  
GIS Analyst



**CONNIE VINER**  
Accountant



**JODI WOOLERY**  
Art Director



**ELIZABETH ZELLER**  
Administrative Assistant

During the past year, several MAPA staff members received promotions and MAPA added several new employees too.

- Promotions
- New Hires

## Employees who contributed to FY2023 programs but are no longer employed by MAPA:

**ISABELLE FLEMING**  
C&O Intern

**KEITH KENNEDY**  
Debris Monitor

**CHARLES MITCHELL**  
Accountant

**SARAH FIXMER POST**  
Graphic Designer

**LAUREN BRADY**  
GIS Intern





**Metropolitan Area Planning Agency**  
2222 Cuming St. | Omaha, NE 68102  
402.444.6866  
[mapacog.org](http://mapacog.org)