



APPENDIX E

MAPA GOVERNANCE AND ORGANIZATION

FY 2020 MAPA COUNCIL OF OFFICIALS

NEBRASKA

CASS COUNTY

Alvo
Cedar Creek
Eagle
Elmwood
Greenwood
Louisville
Manley
Murdock
Murray
Nehawka
Plattsmouth
South Bend
Union
Weeping Water

JANET MCCARTNEY, Commissioner (rep. Board Chair Dan Henry)
ROBIN LAPAGE, Village Board Chair
STEVE SHARP, Village Board Chair
TRAVIS MOORE, Village Board Chair
MIKI BRUNS, Village Board Chair
DON WILKENS, Village Board Chair
ROGER BEHRNS, Mayor
DENISE SWENSON, Village Board Chair
JOHN STROY, Mayor
STAN FLAK, Village Board Chair
SHANE ADAMS, Village Board Chair
R. PAUL LAMBERT, Mayor
PAT CUNNINGHAM, Village Board Chair
CHARLES J. "CJ" SEYLER, II, Village Board Chair
MICHAEL BARRETT, Mayor

DOUGLAS COUNTY

Bennington
Boys Town
Omaha
Omaha City Council
Ralston
Valley
Waterloo

* CLARE DUDA, PRESIDENT
MATT JOHN, Mayor
CHRIS MATHSEN, Village Board Chair
*JEAN STOTHERT, Mayor
*PETE FESTERSEN, City Councilmember (rep. Council President Chris Jerram)
DON GROESSER, Mayor
CARROLL SMITH, Mayor
TRAVIS HARLOW, Village Board Chair

SARPY COUNTY

Bellevue
Gretna
La Vista
Papillion
Springfield

*JIM WARREN, Commissioner (rep. Board Chair Don Kelly)
* RUSTY HIKE, Mayor
JEFF KOOISTRA, (Rep. Mayor Jim Timmerman)
* DOUGLAS KINDIG, Mayor
DAVID BLACK, Mayor
ROBERT ROSELAND, Mayor

WASHINGTON COUNTY

Arlington
Blair
Fort Calhoun
Herman
Kennard
Washington

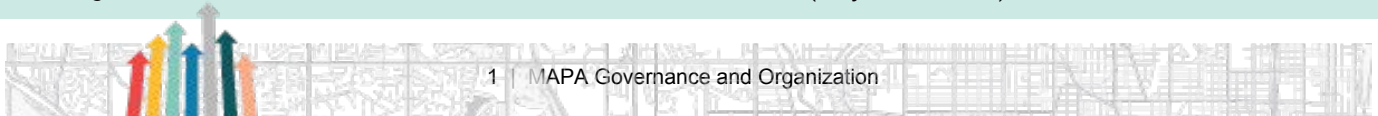
STEVE DETHLEFS, Board Chair
PAUL KRAUSE, Village Board Chair
RICHARD HANSEN, Mayor
MITCH ROBINSON, Mayor
NELS CHRISTENSEN, Village Board Chair
CLINT PEARSON, Village Board Chair
ERNEST BELIK, Village Board Chair

* Board Members

Board Chair
Board Vice-Chair
Secretary-Treasurer
Legal Counsel

September 2020

DOUG KINDIG
CAROL VINTON
PATRICK BLOOMINGDALE
PAUL KRATZ (City of Omaha)



IOWA

MILLS COUNTY

Emerson
Glenwood
Hastings
Henderson
Malvern
Pacific Junction
Silver City

*CAROL VINTON, Supervisor
(rep. Board Chair Lonnie Mayberry), VICE PRESIDENT
STEPHANIE LATTA, Mayor
RON KOHN, Mayor
TROY HATCHER, Mayor
JOEL TOMFORD, Mayor
FRED MOREAU, Mayor
ANDY YOUNG, Mayor
ROSE MARY SCHOENING, Mayor

POTTAWATTAMIE COUNTY

Avoca
Carson
Carter Lake
Council Bluffs
Crescent
Hancock
Macedonia
McClelland
Minden
Neola
Oakland
Treyner
Underwood
Walnut

*JUSTIN SCHULTZ, Board Chair
AARON LONG, Mayor
TIM TODD, Mayor
RON CUMBERLEDGE, Mayor
*MATTHEW J. WALSH, Mayor
BRIAN SHEA, Mayor
JIM KOCK, Mayor
GARY L. WAX, Mayor
MITCH KAY, Mayor
KEVIN ZIMMERMAN, Mayor
KARLA POGGE, Mayor
BRANT MILLER, Mayor
ALLEN HADFIELD, Mayor
DENNIS BARDSLEY, Mayor
GENE LARSEN, Mayor

SPECIAL PURPOSE GOVERNMENTAL ENTITIES

Council Bluffs Airport Authority
Council Bluffs Planning Commission
Fremont School District
Golden Hills RC&D

Greater Bellevue Area Chamber of Commerce
Greater Omaha Chamber of Commerce
Iowa Western Community College
Metro Transit Authority
Metropolitan Utilities District
Metropolitan Community College
Millard Public Schools
Omaha Airport Authority
Omaha Housing Authority
Omaha Planning Board
Omaha Public Power District
Papio Missouri River NRD
Pony Creek Drainage District
Saryp County Chamber of Commerce
Valley Fire District #5
The Wellbeing Partners

ANDY BILLER (representing Board President Scott Hartman)
DAVID STROEBELE, Board Chair
MARK SHEPARD, Superintendent
MICHELLE WODTKE-FRANKS, Executive Director
(representing Board Chair Barry Deuel)
KEVIN HENSEL, President
DAVID BROWN, President
BRENT SIEGRIST, Board President
JAY LUND, Board Chair
MARK DOYLE (representing Board Chair Timothy Cavanaugh)
RON HUG (representing Board Chair Maureen Monahan)
LINDA POOLE, Board President
DAN OWENS (representing Board Chair John Lund)
DAVID LEVY, Board Vice Chair
GREG ROSENBAUM, Board Chair
CRAIG MOODY, Board Chair
FRED CONLEY, Board Chair
JAY CHRISTENSEN, Board Chair
KAREN GIBLER, President
MIKE WIEKHORST, Fire Chief
SARAH SJOLIE, Chief Executive Officer



MAPA ORG CHART

