

[illegible]



# SPEAKING OFFICIALLY

Looking back over the past year, we could not have predicted the catastrophic devastation our region would sustain due to historic flooding which began in March. This destruction touched the lives of so many, including two of MAPA's board members.

MAPA is determined to use its expertise to assist our affected communities and residents in disaster recovery efforts. MAPA is hiring staff members to help guide residents in flood-ravaged areas through the federal home buyout process, and planning ahead for the future, we will work on disaster mitigation plans to reduce chances of a recurrence of such devastation.

The flooding aside, it has been a busy year once again. Among the highlights:

- We welcomed Cass County to the MAPA region, which adds a sixth county to our membership. We are now assisting communities in the County with their transportation planning and economic development needs.
- In partnership with MAPA, the Greater Omaha Chamber launched ConnectGo, a deliberate conversation about transportation needs and possibilities in the Omaha-Council Bluffs metro, to develop a regional transportation plan with a unified vision, which will help shape the region's future growth and quality of life and increase its ability to attract and retain young talent.
- The City of Blair dedicated the first of five new speculative homes built to help meet its need for workforce housing. One home sold already while another is for sale and the final work is being completed on the remaining three houses. Another round of home construction will begin once all five homes sell.

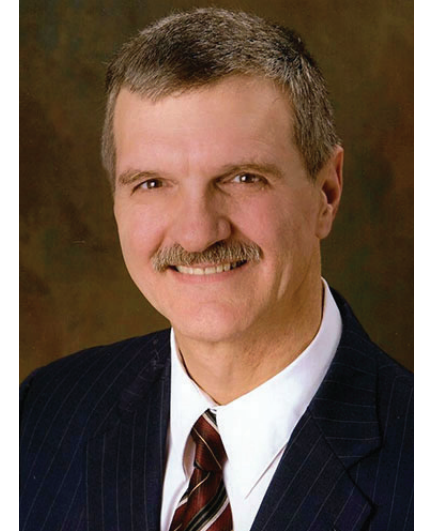
Through these difficult days and beyond, MAPA is committed to helping meet the needs of its communities as they plan for a thriving future.

It is a pleasure to serve as MAPA's Council of Officials President and Board of Directors Chair.

*Douglas Kindig* *Clare Duda*



**MAYOR DOUG KINDIG**  
Chair - MAPA Board of Directors



**COMMISSIONER CLARE DUDA**  
President - MAPA Council of Officials



MAPA welcomed Pete Festersen, Omaha City Councilmember, who joined the Board of Directors and Janet McCartney, Cass County Commissioner, who joined the Council of Officials this year.



# CASS COUNTY JOINS MAPA REGION

We grew...

In July 2019, Cass County became part of the MAPA region.

MAPA's Council of Officials approved the amendment to the MAPA Agreement on July 25, the last step in a lengthy process to have MAPA's boundaries changed to include Cass County.

County officials first requested to join MAPA in late 2016. Data show the

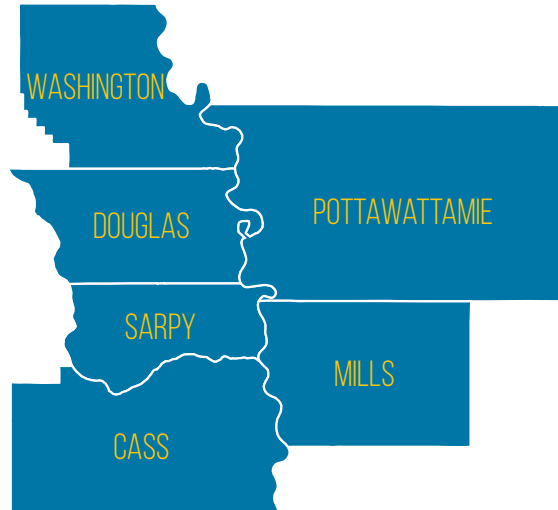
County's population is oriented increasingly toward the Omaha metro area. MAPA data show approximately 47.3% of Cass County residents commute to Douglas and Sarpy Counties for work. The new Highway 75 expressway increases the County's connection to the metro area along with its proximity to Offutt Air Force Base and growing Sarpy County. Cass County is also part of the Greater Omaha Chamber's Economic Development Partnership.

"Joining MAPA will give our entire communities and the County services that will help our areas to work on projects that, without MAPA, will most likely take longer to get accomplished," said Janet McCartney, Cass County Commissioner.

The move required action by the Nebraska Legislature in order to change the boundaries of MAPA's Economic Development District. State senators passed the bill in May 2019 and Governor Ricketts signed it into law.

Previously, Cass County was a member of the South East Nebraska Development District (SEND).

"We are looking forward to attending the meetings and learning more about what MAPA can assist with or provide to our County and our citizens," McCartney said.



# REGIONAL TRANSIT AUTHORITY

Omaha metro area cities will be able to form a new regional transit authority following the Nebraska Legislature's passage of the legislation creating the authority (LB492).

Senator Justin Wayne of Omaha sponsored the bill. The law helps Metro, the transit authority serving the region, to expand the current transit system to help get residents to work who do not have vehicles. Such a framework was a key recommendation from the Regional Transit Vision study coordinated by MAPA and Metro in 2013.

"Passage of LB492, the Metropolitan Regional Transit Authority bill successfully clarifies statutory language that can result in meaningful improvements in connecting our entire metropolitan community," said Curt Simon, Metro Transit Executive Director. "Senator Wayne's recognition of its importance and his willingness to work with Metro was greatly appreciated."

The new regional transit authority will have an elected board. The governing bodies of cities outside Omaha must vote to opt-in to the membership. Currently, cities such as LaVista, Papillion, Bellevue and Council Bluffs contract transit service through Metro Transit.





# HISTORIC FLOODING IN 2019

Historic flooding during the Spring and Summer of 2019 devastated many communities in the MAPA region and the impact will be felt for many years. Residents lost homes, crops, livestock, and even their livelihoods. Raging floodwaters destroyed roads and bridges in both Iowa and Nebraska and

shutdown or limited access to Interstates 29 and 680. President Trump declared all six counties in the MAPA region federal disaster areas, making federal funds available for recovery efforts. As of late September, the Federal Emergency Management Agency (FEMA) had awarded approximately \$15 million in individual assistance in Iowa and approximately \$26 million in Nebraska.

MAPA is applying for U.S. Economic Development Administration funds to hire several disaster recovery coordinators. Staff will assist communities with property acquisitions, infrastructure reconstruction, housing replacement and recovery planning.



# MAPA ADDS DRONE PHOTOGRAPHY

MAPA added drone services to the list of services it is able to provide communities in the MAPA region. GIS Technician Owen Stuckey is a certified and licensed drone pilot.

Through MAPA's drone, Owen has been able to capture video of the damage from the historic flooding but also video of work being done on the community projects on which MAPA provides assistance.

MAPA's drone services are available for communities throughout the region.



Drone photo of the protected bikeway in the River's Edge Development in Council Bluffs, Iowa.



Drone photo of the construction of the first workforce housing being built on the former Dana College campus in Blair, Nebraska.



# CONNECTGO

ConnectGO is an initiative between the Greater Omaha Chamber, MAPA and the Metro Smart Cities coalition to unite the people and businesses of Greater Omaha around shared goals for our region focusing on access to opportunity, economic growth and stewardship of the transportation system. It launched publicly in August 2019. The members of this initiative are working with the public to develop a transportation strategy, which is expected to be completed in 2020.

This initiative aligns with the work MAPA has been performing the past few years through its Metro Area Travel Improvement Study (MTIS) with the Nebraska Department of Transportation (NDOT). The MTIS examined ways to improve the Omaha metro area's transportation systems. It identified nearly \$7.5 billion in investments for the interstate system and transit in the Omaha metro. ConnectGO coincides with and will inform the update to MAPA's Long Range Transportation (LRTP) which is expected to be completed in 2020. The LRTP is updated every five years and it projects regional transportation needs for a 25-year period.

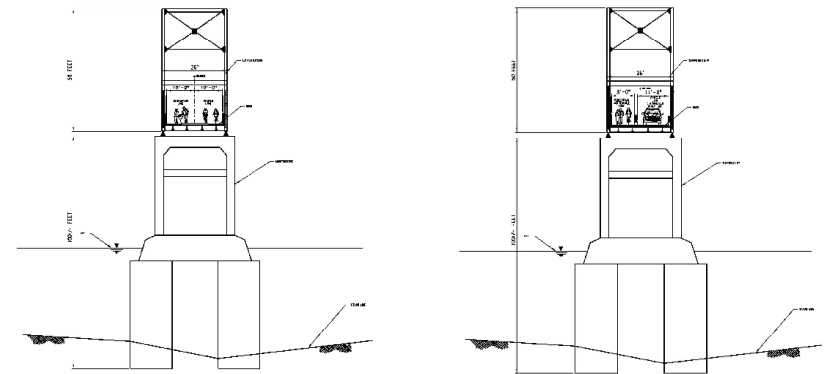
In addition, MAPA is also working with the Metro Smart Cities coalition on projects which embed digital technology across Omaha to aid transportation for all modes and users.



# BELLEVUE BRIDGE STUDY

MAPA's work during the Fall of 2018 and Spring of 2019 included a study of the Bellevue Toll Bridge. Since the U.S. Highway 34 bridge opened in 2015, traffic usage of the 69-year-old structure has dropped from 1.4 million vehicles to 600,000 vehicles annually. However, during the spring flooding when other Missouri River crossings were impacted, usage rose from slightly more than 2,000 vehicles per day to more than 5,000 vehicles per day.

The study conducted by Felsburg, Holt, and Ullevig (FHU) and RDG, Inc., narrowed down three options for the bridge: tearing it down, building a new bridge with a dedicated lane for bicyclists and pedestrians, and converting the bridge to a recreational trail. A final report on the recommended option for the Toll Bridge is expected this fall.



Two of the six evaluated bridge alternatives included Bridge Conversion to Recreational Trail Facility (left) and Upgrade Bridge to Separate Lanes for Vehicles and Trail (right).





# REGIONAL PROJECTS

Blair  
Workforce  
Housing

Blair  
Dana  
Suites

Washington

Hancock  
Water/Sewer

Hancock  
Lift  
Station

Pottawattamie

W. Douglas  
Co. Trail

180th St.

Waterloo-  
Valley  
Housing

Douglas

156th St.

30th St.  
Road Diet

1st Avenue  
Corridor Study

ORBT

Forever  
North

24th St.  
Road Diet

13th Street  
Walkability  
Study

Council Bluffs  
Housing  
Trust Fund

Treynor  
Streets

Carson  
Revitalization

Macedonia  
Welcome Sign

Macedonia  
Revitalization

Sarpy

36th St.

Bellevue  
Bridge  
Study

Iowa West Nishnabotna  
Watershed Project  
Administration

Mills Co. Hazard  
Mitigation Plan

Mills

Malvern Health  
5-2-1-0 Project

Pacific Junction  
Flood Assistance

## Legend

### 2019 Projects

- Community Development
- Federal
- Health
- Housing
- Transportation
- Trail
- Transit



0 2.5 5 10  
Miles





## Local Federal-aid Projects

156th Street, from West Dodge Road to West Maple Road

- Construction underway

180th Street, from North HWS Cleveland Boulevard to West Maple Road

- Beginning construction in 2019, continuing through 2020

West Broadway Reconstruction

Eastern Hills Drive

156th Street, from Pepperwood to Corby

108th Street, from Madison to Q Street

26th & Q Street Bridge

Harrison Street, from 146th to 156th

B-cycle Expansion & E-bikes

### Projects in Development

30th Street Road Diet, from Cuming Street to Ames Street

24th Street Road Diet, from L Street to Leavenworth Street

36th Street, from Highway 370 to Sheridan Road

168th Street, from West Center Road to Q Street

168th Street, from West Center Road to Poppleton



Lewis & Clark Trail signage (Trail Project)

Western Douglas County Trail (Trail Project)

- Beginning construction in 2019, continuing through 2020



Omaha Rapid Bus Transit (ORBT) - Omaha, NE (Transit Project)

- Beginning construction in 2019, continuing through 2020



## Community Development

Water/Sewer Construction - Hancock, IA

Lift Station - Hancock, IA

Downtown Revitalization - Carson, IA

Welcome Sign - Macedonia, IA

Downtown Revitalization - Macedonia, IA

Street Construction - Treynor, IA *(pictured below)*

Pacific Junction Flood Assistance

Mills County Hazard Mitigation Plan

Iowa West Nishnabotna Watershed Project Administration



## Health Projects

5-2-1-0 Health - Malvern, IA *(pictured below)*

Community Garden

Liberty Memorial Community Building Renovation

Bike Omaha Network



## Housing Projects

Workforce Housing - Blair, NE *(pictured below)*

Dana Suites - Blair, NE

Valley-Waterloo Owner Occupied Rehabilitation

Council Bluffs Housing Trust Fund Administration



## Transportation Studies

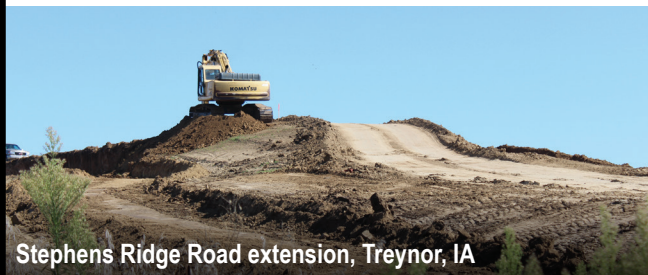
Bellevue Bridge Alternatives Study - Bellevue, NE

1st Avenue Corridor Study - Council Bluffs, IA

13th Street Walkability Study

Forever North (24th Street Corridor Study)

## COMMUNITY DEVELOPMENT PROJECTS ∞



Stephens Ridge Road extension, Treynor, IA



Community Garden, Malvern, IA



Liberty Memorial Community Building, Malvern, IA

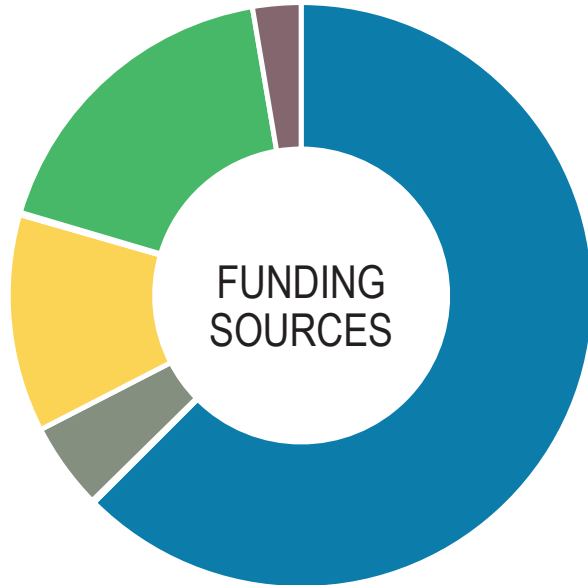


Workforce Housing, Blair, NE



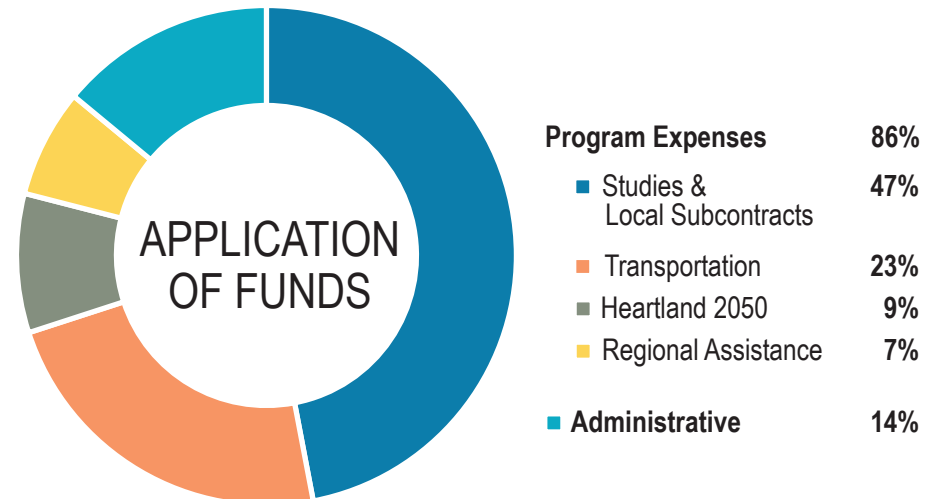
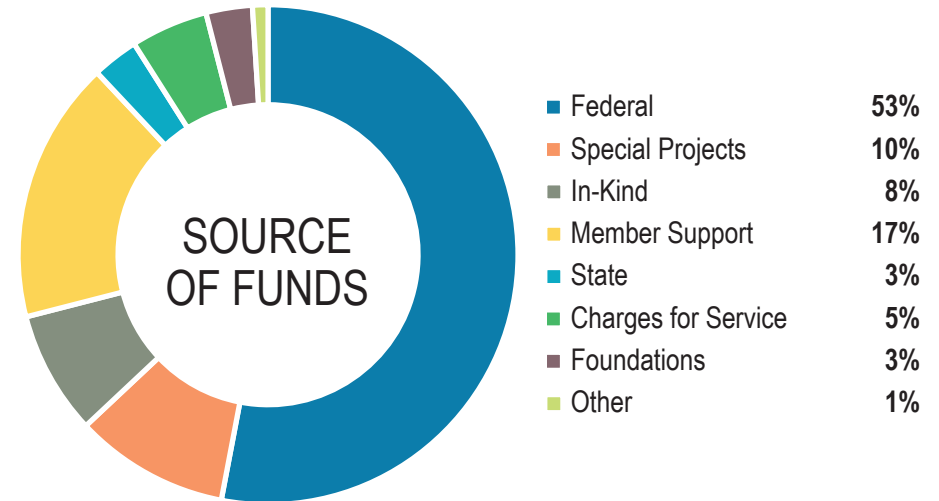
# MAPA COMMUNITY DEVELOPMENT PROJECTS FY 2014 - FY 2019

TOTAL: \$20,727,180



WATER/SEWER	\$12,954,550
SURFACE INFRASTRUCTURE	\$993,121
HAZARD MIGRATION	\$30,000
DOWNTOWN REVITALIZATION	\$2,491,168
ECONOMIC DEVELOPMENT	\$26,295
HOUSTING	\$3,678,795
PLANNING	\$553,251

## MAPA FUNDING FY 2019



Unaudited figures

# HEARTLAND 2050 SUMMIT

In May 2019, Heartland 2050 brought Katharine Eagan Kelleman to the metro for its 2019 Summit, “Connecting People to Life: Transit in a New Light.”

Ms. Kelleman is the Chief Executive Officer of the Allegheny County Port Authority, the public transit system serving the Pittsburgh region.

She focused on how transit services connect people to life and the importance of providing services to core, multiple times a day users while expanding transit options to capture business riders who can drive their vehicles but choose to use transit instead.



Katharine Eagan Kelleman was the keynote speaker for the 2019 Heartland 2050 Summit. Kelleman has used creative solutions at different transit authorities, including Dallas Area Rapid Transit, Hillsborough Area Regional Transit, and the Allegheny County Port Authority.

## METRO SMART CITIES

A Smart City is an urban area that has digital technology embedded across all city functions in order to optimize the efficiency of city operations and services. MAPA is an active founding partner in Metro Smart Cities and contributes staff time and resources. A project coordinator was hired July 1 to lead this effort, and will be housed at Omaha by Design.

### Metro Smart Cities pilot projects under exploration include:

**The Market to Midtown Bikeway** – Creation of a protected bike lane connecting two major city hubs more safely. Smart technology will be used to collect and communicate data in order to tell a story about the ridership and usage of the lane. If successful, the project may be installed permanently and would be replicated elsewhere in the city.

**Unified Seamless Payment System** – Creation of a unified transportation application that would allow for seamless payment for the use of various transportation options.

**Metro Smart Cities District** – A Smart City District implements Smart City concepts such as innovative transportation and technology projects in a defined geographic area in order to take advantage of existing density, shared resources, and increased visibility.

## HIGHLIGHTS OF HEARTLAND 2050 IMPLEMENTATION COMMITTEES



### Natural Resources

Launched Natural Resources inventory data portal - August 2019  
Participate as a partner in Share Our Table regional food plan launched – Spring 2019



### Infrastructure

Contributing actively to ConnectGo committees



### Housing and Development

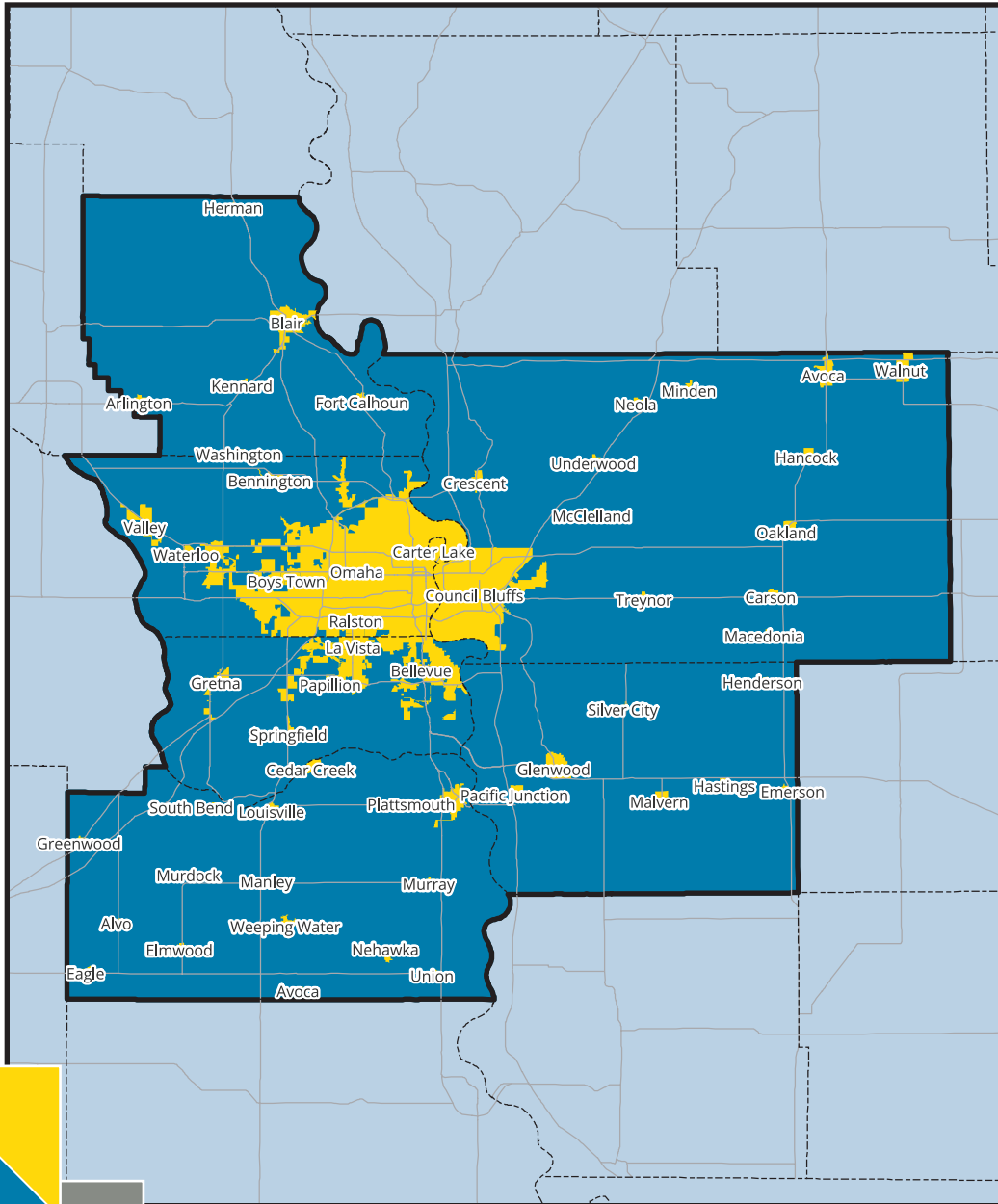
Developing outreach materials targeting key stakeholder groups  
Hosted Housing Narrative Workshop



### Equity and Engagement

Creating an Equity Scorecard for development projects





## FY 2019 MAPA STAFF

**Greg Youell**  
Executive Director

**Grant Anderson**  
Community and Economic  
Development Planner

**Court Barber**  
Transportation Planner  
& Local Projects Liaison

**Natasha Barrett**  
Bookkeeper

**Margie Bell**  
Human Resources Manager

**Jim Boerner**  
Transportation Planner

**Christina Brownell**  
Events Coordinator &  
Administrative Assistant

**Josh Corrigan**  
GIS Coordinator

**Sue Cutsforth**  
Information Officer

**Melissa Engel\***  
Finance & Operations Director

**Sarah Fixmer**  
Intern

**Don Gross**  
Community and Economic  
Development Manager

**Travis Halm**  
Transportation Planner

**Michael Helgersen**  
Transportation Manager

**Trevor Harlow\***  
Intern

**Karna Loewenstein**  
Heartland 2050 Coordinator

**Amanda Morales**  
Fiscal Officer

**Ryan Ossell**  
Community and Economic  
Development Planner

**Annie Pigaga\***  
Graphics Specialist

**Katie Preister\***  
Human Resources Manager

**Tom Ryan**  
Intern

**Matt Roth\***  
Community and Economic  
Development Planner

**Andrew Schnitker\***  
Intern

**Kelly Shoff\***  
Communications Assistant

**Emily Sneller**  
Administrative Assistant

**Jeff Spiehs**  
Community Relations Manager

**Owen Stuckey**  
GIS Assistant

**Sheena Van Ornum\***  
Intern

**Megan Walker**  
Transportation Planner

**Ariana Wesley-Powell**  
Intern

**Jodi Woolery**  
Graphics Specialist

\*Employee who contributed to FY 2019 programs but is no longer employed by MAPA

# MAPA COUNCIL OF OFFICIALS

## NEBRASKA

CASS COUNTY (26,159).....	*JANET MCCARTNEY, Commissioner (rep. Board Chairman Dan Henry)
Alvo (137).....	ROBIN LAPAGE, Village Board Chairman
Cedar Creek (407).....	STEVE SHARP, Village Board Chairman
Eagle (1,086).....	TRAVIS MOORE, Village Board Chairman
Elmwood (656).....	MIKI BRUNS, Village Board Chairman
Greenwood (591).....	DON WILKENS, Board Chairman
Louisville (1,295).....	ROGER BEHRNS, Mayor
Manley (170).....	DENISE SWENSON, Village Board Chair
Murdock (244).....	PATRICK BOBER, Village Board Chairman
Murray (480).....	STAN FLAK, Village Board Chairman
Nehawka (210).....	ALLEN GANSEMER, Village Board Chairman
Plattsmouth (6,480).....	R. PAUL LAMBERT, Mayor
South Bend (104).....	PAT CUNNINGHAM, Village Board Chair
Union (242).....	DWAIN HARDBARGER, JR, Village Board Chairman
Weeping Water (1,091).....	MICHAEL BARRETT, Mayor
DOUGLAS COUNTY (566,880).....	PRESIDENT *CLARE DUDA (rep. Board Chair Mary Ann Borgeson)
Bennington (1,521).....	MATT JOHN, Mayor
Boys Town (595).....	JOHN MOLLISON (rep. Board Chairman Rev. Steven Boes)
Omaha (468,262).....	*JEAN STOTHERT, Mayor
Omaha City Council.....	*PETE FETERSEN, City Councilmember (rep. Council President Chris Jerram)
Ralston (7,296).....	DON GROESSER, Mayor
Valley (2,845).....	JOAN SUHR (rep. Mayor Carroll Smith)
Waterloo (915).....	KEN HITCHLER, Village Board Chairman
SARPY COUNTY (184,459).....	*DON KELLY, Board Chairman
Bellevue (53,627).....	*RUSTY HIKE, Mayor
Gretna (5,076).....	JEFF KOOISTRA, (rep. Mayor Jim Timmerman)
La Vista (17,163).....	*DOUG KINDIG, Mayor
Papillion (20,530).....	DAVID BLACK, Mayor
Springfield (1,612).....	ROBERT ROSELAND, Mayor
WASHINGTON COUNTY (20,667).....	STEVE DETHLEFS, Board Chairman
Arlington (1,304).....	PAUL KRAUSE, Village Board Chairman
Blair (7,990).....	RICHARD HANSEN, Mayor
Fort Calhoun (959).....	MITCH ROBINSON, Mayor
Herman (267).....	NELS CHRISTENSEN, Village Board Chairman
Kennard (363).....	CLINT PEARSON, Village Board Chairman
Washington (157).....	ERNEST BELIK, (Board of Trustees)

## IOWA

MILLS COUNTY (15,063).....	*CAROL VINTON, Board Chair
Emerson (441).....	DAVID GALLEY JR, Mayor
Glenwood (5,316).....	RON KOHN, Mayor
Hastings (150).....	ALITA JONES, Mayor
Henderson (182).....	JOEL TOMFORD, Mayor
Malvern (1,099).....	MICHAEL K. BLACKBURN, Mayor
Pacific Junction (470).....	ANDY YOUNG, Mayor
Silver City (242).....	TOMMY JENSEN, Mayor

## IOWA

POTTAWATTAMIE COUNTY (93,533).....	*JUSTIN SCHULTZ, Supervisor (rep. Board Chairman Tim Wichman)
Avoca (1,531).....	AARON C. LONG, Mayor
Carson (817).....	TIM TODD, Mayor
Carter Lake (3,784).....	RON CUMBERLEDGE, Mayor
Council Bluffs (62,421).....	*MATTHEW J. WALSH, Mayor
Crescent (616).....	BRIAN SHEA, Mayor
Hancock (195).....	HAROLD HOFFMAN, Mayor
Macedonia (245).....	GARY L. WAX, Mayor
McClelland (152).....	MITCH KAY, Mayor
Minden (591).....	KEVIN ZIMMERMAN, Mayor
Neola (869).....	VICE PRESIDENT DAWN M. GOODSSELL, Mayor
Oakland (1,507).....	BRANT MILLER, Mayor
Treynor (964).....	THOMAS G. LEWIS, Mayor
Underwood (947).....	DENNIS BARDSLEY, Mayor
Walnut (774).....	GENE LARSEN, Mayor

## SPECIAL PURPOSE GOVERNMENTAL ENTITIES

Bellevue Public Schools.....	SARAH CENTINEO, Board President
Council Bluffs Airport Authority.....	ANDY BILLER (rep. Board President Scott Hartman)
Council Bluffs Planning Commission.....	PETER HUTCHESON, Board Chairman
Fremont School District.....	MARK SHEPARD, Superintendent
Golden Hills RC&D.....	MICHELLE WODTKE-FRANKS, Executive Director (rep. Board Chairman Barry Deuel)
Iowa Western Community College.....	DOUG GOODMAN, Board Chairman
Metro.....	MICHAEL YOUNG, Board Chairman
Metropolitan Utilities District.....	MARK DOYLE (rep. Board Chairman Timothy Cavanaugh)
Metropolitan Community College.....	DAVE PANTOS (rep. Board Chairman Steve Grabowski)
Millard Public Schools.....	DR. JIM SUTFIN, Superintendent
Omaha Airport Authority.....	DAN OWENS (rep. Board Chairman Bennett Ginsberg)
Omaha Housing Authority.....	DAVID LEVY, Board Vice Chair
Omaha Planning Board.....	GREG ROSENBAUM, Board Chairman
Omaha Public Power District.....	TOM RICHARDS, (rep. Board Chairman Tim Gay)
Papillion-La Vista Public Schools.....	ANDREW RIKLI, Superintendent
Papio Missouri River NRD.....	FRED CONLEY, Board Chairman
Pony Creek Drainage District.....	JAY CHRISTENSEN, Board Chairman
Ralston Public Schools.....	DR. MARK ADLER, Superintendent
Valley Fire District #5.....	AARON UECKERT, Fire Chief
Board Chair.....	DOUG KINDIG
Board Vice-Chairman.....	CAROL VINTON
Secretary-Treasurer.....	PATRICK BLOOMINGDALE
Legal Counsel.....	PAUL KRATZ (City of Omaha)

\*Board Members

Figures within parentheses represent 7/1/2018 Census Bureau population estimates

The preparation of this publication is financed through planning grants from the U.S. Dept. of Transportation through Iowa DOT and the Nebraska Dept. of Roads as Provided by the Federal Highway Administration, the Federal Transit Administration and the Economic Development Administration and through local funds from member jurisdictions. The views and opinions MAPA expressed herein do not necessarily state or reflect those of the U.S. Department of Transportation or the Economic Development Administration.



