

2015

Connect.

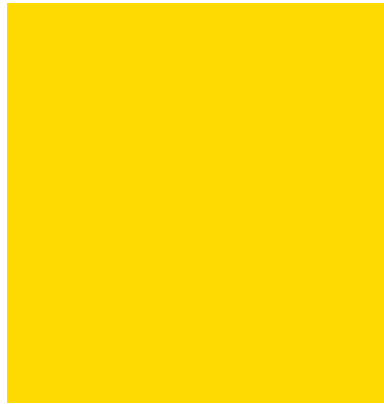
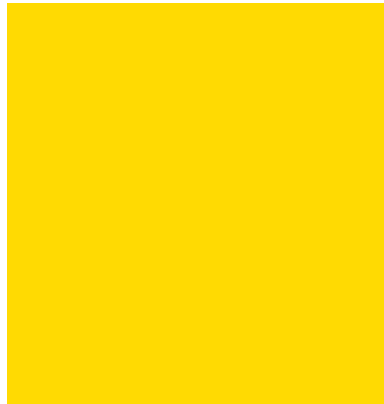
Annual Report

Plan.

MAPA

Omaha - Council Bluffs
Metropolitan Area
Planning Agency

Thrive.



Speaking Officially



Doug Kindig
PRESIDENT

MAPA COUNCIL OF OFFICIALS

It is an honor and a pleasure for us to serve as the President of MAPA's Council of Officials and the Chair of MAPA's Board of Directors. MAPA brings together officials from a number of diverse communities to work together on regional issues.

In 2015, we celebrated the completion of several projects and phases of projects funded by agencies such as the Department of Defense and the Federal Highway Administration. A few of the highlights include:

- The Offutt Joint Land Use Study made recommendations for managing growth and development around Offutt Air Force Base while maintaining operations at this military installation.
- Heartland 2050 debuted its collaborative regional vision in November 2014 and selected its Executive Committee and

announced the membership during the first semi-annual summit: "The First 5" to move this regional visioning project into implementation.

- The Heartland Connections Bicycle-Pedestrian Master Plan provided an analysis of the region's walking and bicycling infrastructure and recommendations for achieving more walkable neighborhoods with complete streets which provide infrastructure and signage for cyclists.

Those are a few of the projects MAPA accomplished in the past year with the help and support of our member cities and counties.

We look forward to more opportunities to connect with our communities, plan for the future, and thrive as a region.



Ron Kohn
CHAIRMAN

MAPA BOARD OF DIRECTORS



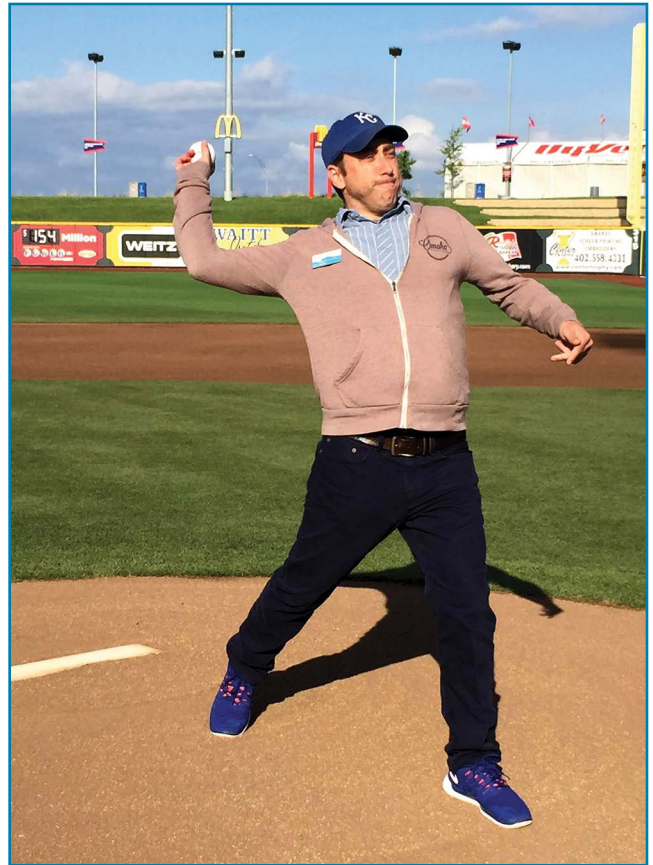
(L to R) George Maher, Executive Director of the Montgomery County Development Corporation; Larry Winum, Glenwood State Bank President/CEO; and retired Nebraska Senators Paul Hartnett and Roger Wehrbein attend the opening ceremony for the U.S. Highway 34 bridge.



Members of the Infrastructure Committee for Heartland 2050 provide feedback on goals for the regional visioning project at the First Five Summit.



Heartland 2050 team members display MAPA's award from the National Association of Regional Councils (NARC). (L to R) Jeff Spiels, Community Engagement Coordinator; Lynn Dittmer, Community & Economic Development Manager; Greg Youell, Executive Director; and Karna Loewenstein, Heartland 2050 Coordinator. *Not pictured: Former Heartland 2050 Project Manager Clint Sloss.*



Community Engagement Coordinator Jeff Spiels throws out the first pitch at the Omaha Storm Chasers' game on May 26, 2015.



Attendees of the Bus Rapid Transit (BRT) Public Open House submit their ideas for a name for Nebraska's first BRT.



MAPA launches its first Heartland 2050 summit. (L to R) Steve Eggleston, HUD Des Moines Field Office; Shelley Lauten, triSect; Greg Youell; Karna Loewenstein; Connie Spellman, Heartland 2050 Executive Committee Chair; and Earl Redrick, HUD Omaha Field Office.



Members of the public review possible long-term alternatives for the Platteview Road Corridor.

Heartland 2050 Regional Vision Enters Implementation

In 2015, the Heartland 2050 Regional Vision, MAPA's key long-range planning initiative, moved to implementation.

MAPA staff began the year by traveling throughout the eight-county region to meet with individual communities in search of support for the Regional Compact.

Implementation of the regional vision is managed by the Heartland 2050 Executive Committee. Retired Omaha by Design Executive Director Connie Spellman serves as Chair of the Heartland 2050 Executive Committee. The remaining 30 seats on the Executive Committee are represented by seven county appointees, three city appointees, chairs of the six Implementation Committees, and 14 at-large positions.



Regional planning expert Shelley Lauten (from triSect) addresses participants of the Heartland 2050 First 5 summit.

The implementation committees will focus on the vision topics of resources, infrastructure, housing and development, economic development, education and health and safety.

MAPA announced the Executive Committee at its first Heartland 2050 Summit in July. "Heartland

THE FIRST
5
2015-2020

2050: The First 5" focused on setting goals for the first five years of the plan which spans 35 years.

Summit participants heard inspiring words from Shelley Lauten, a regional planning expert from Central Florida. She worked previously with myregion.org, which implemented a regional vision for seven counties in the Orlando metropolitan region. Attendees from businesses, non-profit organizations, governments and the general public divided into discussion groups based on the six topic areas. Through collaboration they broke down large strategic goals into smaller, more manageable steps.

Finding projects which support the vision's goals and help move the vision forward are key goals of the Executive and Implementation Committees. They will focus on making sure equity is a key component of all project work.

The committees meet monthly. Heartland 2050 will also have semi-annual summits. The next one is scheduled for February 24, 2015.

Committee Chairs

Connie Spellman Executive Committee

Dr. Dan Kinney Education 

Mark Norman Economic Development 

Dr. Adi Pour Health & Safety 

David Levy Housing & Development 

Tim O'Brien Infrastructure 

Nancy Pridal Natural Resources 



Equity and Engagement in Heartland 2050

A driving force of the Heartland 2050 project has been the Equity and Engagement Committee.

This committee developed our definition of Equity - All individuals, regardless of ability, and communities within the region will have full and equal access to the opportunities which enable them to attain their full potential. Equity, Efficiency, Inclusivity, and Local Control/Regional Benefit comprise the four guiding principles for the Heartland 2050 Vision.

The Equity and Engagement Committee also worked with PolicyLink, a national research and action institute, and the University of Southern California Program for Environmental and Regional Equity to conduct a regional equity profile.

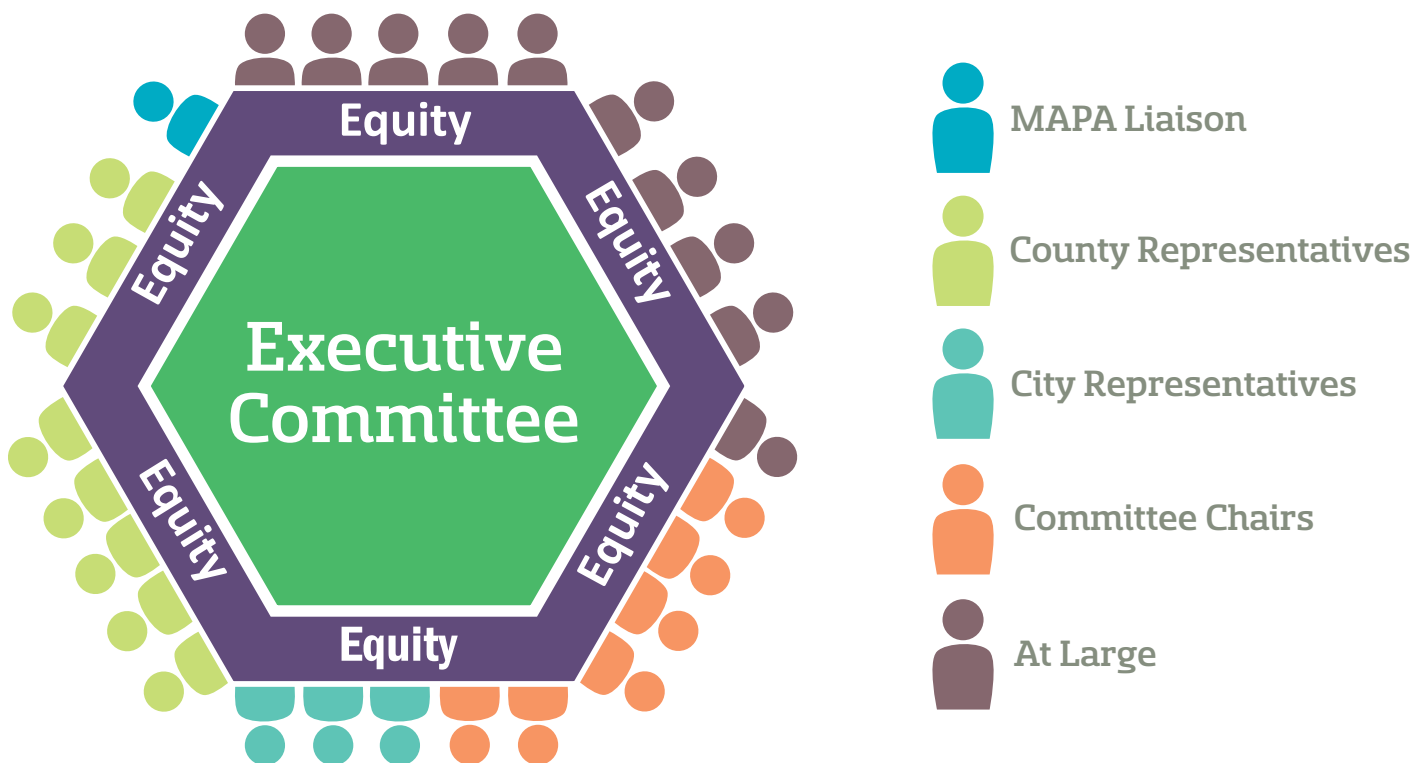
This profile, which was released in December 2014, showed disparities in income, employment

and education cost the region's economy nearly \$4 billion in Gross Domestic Product.

Another important component of the Committee's work was the creation of a set of indicators of equitable and sustainable development. These indicators were shared with the Steering Committee and influenced the spirit and language of the vision document.

As we move to the Implementation phase of the project, equity issues remain in the forefront. The Executive Committee as well as the six Implementation Committees will read, analyze and discuss the Regional Equity Profile and be mindful of its findings as they assess potential strategies and projects.

The Equity Profile Summary as well as the full document can be found at heartland2050.org/equityprofile/.



MAPA Completes Offutt Joint Land Use Study

The Metropolitan Area Planning Agency (MAPA) released its draft Joint Land Use Study (JLUS) for Offutt Air Force Base in July with several recommendations included to help reduce potential conflicts between the base and surrounding communities.

A Joint Land Use Study (JLUS) examines 25 potential compatibility factors, both man-made and natural ones. Some factors include noise, safety zones, vertical obstructions, and roadway capacity. The primary objective of a JLUS is to reduce potential conflicts while accommodating new growth and economic development, sustaining economic vitality, protecting public health and safety and sustaining the operational missions of the base.

The Joint Land Use Study found no critical or major issues in encroachment or compatibility with Offutt Air Force Base, the City of Bellevue and other surrounding communities. Several points of interest are noted. Some recommendations include raising the levee which protects the base from flooding so the U.S. Army Corps of Engineers re-certifies it, and military operations continue at Offutt AFB and improved communication between the base and the community when emergency management

training or disaster drills are scheduled. Another recommendation involves future development on Highway 34 near the base and taking steps to ensure it does not impact operations near the military installation.

The project moves now to the implementation phase. During the next several months, resolutions seeking support for the recommendations of the Offutt Joint Land Use Study (JLUS) will be presented to local governments in the communities surrounding the base.

Offutt AFB is an essential asset for our region as the headquarters of the US Strategic Command and the Air Force Weather Agency. It is home to the 55th Wing of the Air Combat Command.



JOINT LAND USE STUDY

10,127

civilian and military personnel assigned to Offutt AFB

\$1,306,183,968

total economic impact from Offutt AFB to local and regional economies

\$627,984,686

in annual payroll

4,781 indirect jobs created

FY 2013



U.S. AIR FORCE

MTIS Enters Phase II of Project

MAPA's Metro Area Travel Improvement Study (MTIS) is wrapping up Phase I and is poised to move into Phase II in 2016. The study is a collaboration between the Nebraska Department of Roads (NDOR) and MAPA to identify long-term needs of the interstate and freeway system in the Omaha region.

The MTIS will also include recommendations for improving other major roadways in the region, transit service, and the performance of existing roadways using technology. This comprehensive approach is designed to ensure that all modes are represented in future recommendations, and that new or innovative strategies are evaluated as well.

During the past year, MAPA and NDOR worked closely with HDR (the lead consultant on the project) to identify existing conditions of the transportation network throughout the region. This data included information about pavement condition, the condition of bridges, travel time, vehicle crashes, and the short-term needs of Metro Transit. These existing conditions were presented to stakeholders and local, state and federal partners to identify different strategies to address these long-term needs.

Throughout the next year, the project team

will create twelve sets of recommendations for meeting the long-term needs of the region as a part of Phase II of the project. Each set will contain a different balance of project types, project corridors, and level of investment to identify which one best meets the region's needs. They will be evaluated based on 20 performance indicators which will help NDOR and MAPA prioritize the projects to be recommended.

MAPA will incorporate the information from this planning process into its next long-range plan. Multiple public meetings will occur to share new information and gain feedback on different strategies and recommendations identified through the planning process.

MTIS UPDATE

- Pavement conditions
- Bridge conditions
- Travel time
- Vehicle crashes
- Needs of Metro Transit



Existing conditions of the transportation network are some of the data collected during Phase I of the Metro Area Travel Improvement Study (MTIS).

Bicycle-Pedestrian Master Plan Released

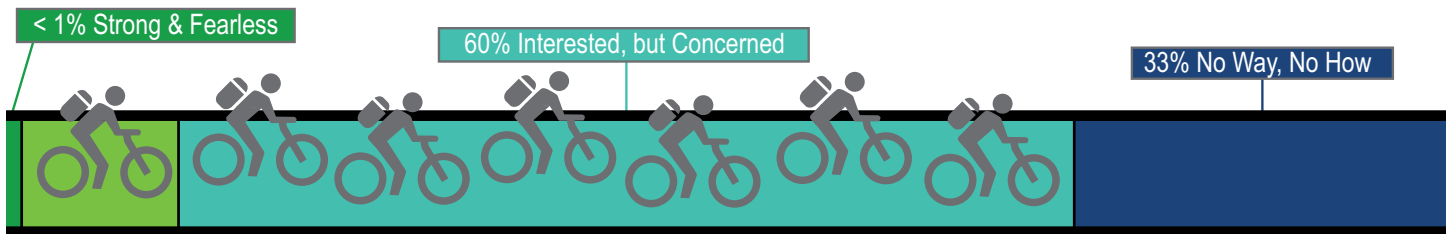
In May of 2015, MAPA released its Heartland Connections Regional Bicycle-Pedestrian Master Plan which identifies regional bicycle corridors and key pedestrian issues, and makes recommendations for potential bikeway projects and developing strategies which make communities more walkable.

The plan's recommendations focus on improving travel for bicyclists and pedestrians through both short-term and long-term projects. Shorter

term projects include bicycle boulevards and wayfinding projects, which use signs to direct users to routes which guide them to various destinations within the Omaha-Council Bluffs metropolitan area. Longer-term projects include road resurfacing work to include bikeway facilities, such as bike lanes.

The plan will help MAPA develop criteria for selecting projects for its Transportation Alternatives Program (TAP) funding.

FOUR TYPES OF TRANSPORTATION CYCLISTS



7% Enthused & Confident

Strong & Fearless – These cyclists will ride in their communities regardless of weather conditions or the availability of cycling infrastructure.

Enthused & Confident – Enthused & Confident riders are comfortable sharing the road with automobiles, but prefer riding in designated bikeway facilities.

Interested, but Concerned – These residents enjoy riding a bike, and are curious about using a bike for transportation. However, concerns about their own personal safety due (in large part) to conflicts with motorists. These riders are encouraged to ride if protected or separated facilities exist in their communities.

No Way, No How – Not interested in cycling as a transportation mode because of factors such as topography, inability, or lack of personal interest.



Bellevue Mayor Rita Sanders stands with cyclists from the Bellevue Bicycle Club at the Mayor's Bike Ride on May 12, 2015. The annual event helps promote cycling and the Live Well Omaha Commuter Challenge powered by MAPA and Metro.



Metro Helps Regional Transit Vision Take Shape

Several projects underway at Metro this year are aimed at enhancing transit service in the Omaha-Council Bluffs metropolitan area.

Service route changes for Metro Transit buses took effect May 31st on many of Metro's most heavily traveled routes. They provide for greater frequency of buses, and more buses on weekends and later in the evening without any increased funding.

4,000 CUSTOMER SURVEYS ✓

9 MAIN LINES EXTENDED PAST MIDNIGHT

MORE FREQUENT SERVICE ON MAIN BUS LINES

2,300 MORE MILES ON WEEKENDS

The changes are the result of feedback from riders about what they need and how bus service could help them better. They are in alignment with the Regional Transit Vision

which MAPA developed with Metro in 2014. It calls for enhanced transit service and options.

The first major piece of the Regional Transit Vision is the Bus Rapid Transit (BRT) project. The BRT system is a \$30 million project with nearly \$15 million provided through a TIGER (Transportation Investment Generating Economic Recovery) grant awarded to Metro Transit in September 2014 by the U.S. Department of Transportation. The remainder of the project's cost will be paid for with local money.

The BRT will have 25 to 27 stations along an eight-mile corridor connecting downtown Omaha and Westroads. In July, Metro unveiled three preliminary station design

8 MILES BRT	1.5 MILES SEMI-EXCLUSIVE GUIDEWAY	2,740 PASSENGERS OPENING DAY
10 MIN PEAK	15 MIN OFF-PEAK	1,200 JOBS
20 MIN EVENING	7 DAYS PER WEEK	1,350 RESIDENTS
Q JUMP SIGNAL PRIORITY	PREPAID BOARDING	\$450 MILLION DEVELOPMENT
LEVEL BOARDING	BRANDED STATIONS	

concepts. Projections show the BRT line will increase economic development by \$450 million, bring 1,350 new residents and create 1,200 long-term jobs in the heart of Omaha.

Construction is slated to begin in late 2016 with the Bus Rapid Transit line opening projected in the Fall of 2018.

Another element of the Regional Transit Vision and possible transit project for the Omaha-Council Bluffs metropolitan region is the Urban Circulator or Modern Streetcar. The Urban Circulator is part of the Central Omaha Transit Alternatives Analysis along with Bus Rapid Transit. It is a fixed-guideway electric rail system which could accommodate 130 to 160 passengers per vehicle. A financial analysis of the potential project is underway.



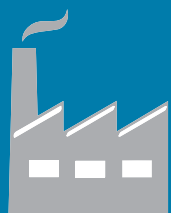
Graphics provided by Metro Transit

COMMUNITY ASSISTANCE

Brownfields

17 SITES WERE ASSESSED

TOTAL PROJECT COST: \$835,000



10 INDUSTRIAL



6 COMMERCIAL



1 OPEN SPACE

Revolving Loan Fund

\$108,760 LOAN
NOVOZYMES

\$105,520 LOAN
GRAEPEL NORTH AMERICA
LOANS PAY INTO RLF



\$25,000 LOAN
KB QUALITY MEATS
LOAN MADE TO LOCAL BUSINESS

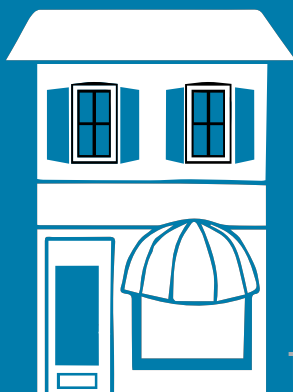
Walnut Downtown

WILL REHAB

15

COMMERCIAL
FACADES

TOTAL PROJECT COST: \$750,000



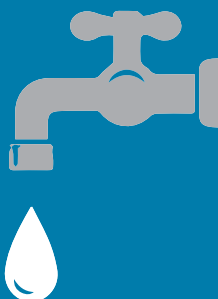
67 PROJECTS
COMPLETED

TO IMPROVE INFRASTRUCTURE

TOTAL PROJECT COST: \$28,806,396

APPROX. 33% GRANTED BY
THE IOWA WEST FOUNDATION

CITIES



Region-wide Community Assistance

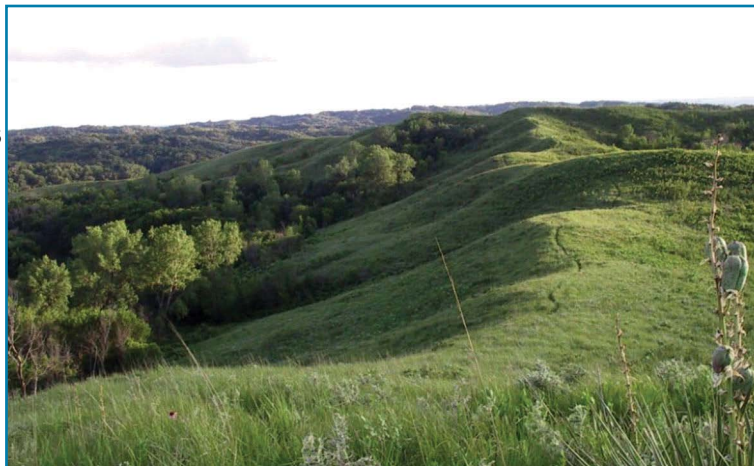
- Secured Nebraska state funding for regional assistance to local governments
- Supported new revenues for infrastructure for Nebraska and Iowa (LB 610 and SF 257).
- Completed Heartland Connections Bike-Pedestrian Regional Plan which assesses the region's cycling and walking current conditions and provides recommendations for improvements.
- Finalized the 2040 Long Range Transportation Plan (LRTP).
- Completed and published the Omaha Metro Area Bicycle Map for distribution.
- Created Citizens' Advisory Council with first meeting in October 2014.
- Coordinated 2015 Little Steps Big Impact ozone awareness and education program.
- Coordinated with Live Well Omaha to promote 2015 Commuter Challenge.
- Scheduled meetings of the Multi-Modal Planning Group (MPG) to discuss Congestion Mitigation Air Quality (CMAQ) criteria and proposed air quality standards.
- Presented Heartland 2050 Regional Vision to the following:
 - **Douglas County:** County Board of Commissioners
 - **Harrison County:** City of Missouri Valley
 - **Mills County:** City of Malvern; County Board of Supervisors
 - **Pottawattamie County:** Cities of Carson, Oakland, Treynor, and Underwood; County Board of Supervisors
 - **Sarpy County:** Cities of Bellevue, Gretna, La Vista, and Springfield; County Board of Commissioners
 - **Saunders County:** City of Wahoo; County Board of Supervisors
 - **Washington County:** City of Blair

MAPA Assists with Pottawattamie County Comprehensive Plan Update

One of MAPA's new projects in 2016 is the Comprehensive Plan Update for Pottawattamie County. The Comprehensive Plan is designed to act as a guide for growth and development as well as being the basis for establishing land use policies and regulations.

The Plan will analyze existing conditions within the County relating to population and demographics, land use, housing, and public facilities and infrastructure including transportation, parks and open space.

Through interpretation of the data collected during the analysis phase and through public involvement and participation, the Plan will also establish goals and objectives, which will enable elected officials and citizens to make informed and educated decisions about the future of Pottawattamie County.



Within the Pottawattamie Comprehensive Plan update, preservation of the Loess Hills remains a priority.

The Plan will make recommendations regarding implementation of the goals and objectives as well.

South Omaha Brownfields Project Update

Seventeen Phase I and eleven Phase II Environmental Site Assessments have been completed under the South Omaha Brownfields project. The project, funded by an \$835,000 U.S. Environmental Protection Agency Brownfields grant, takes significant steps to address South Omaha brownfields, which are parcels where known or suspected hazardous substances, pollutants or contaminants are present. The parcels often become blighted as real or perceived contamination prevents investment and redevelopment.

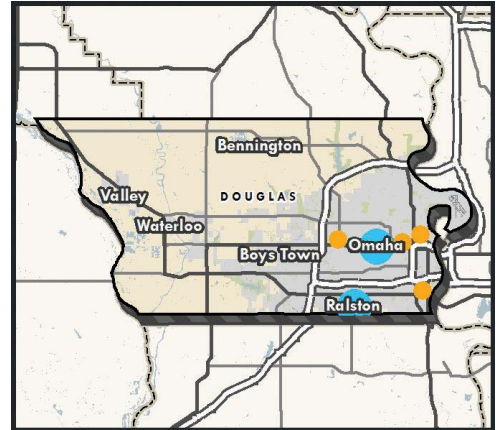
Site assessments began by conducting background research on the site, and then performing a Phase I Environmental Site Assessment (ESA). Upon completion of a Phase I ESA, the decision to perform additional

assessments (e.g. Phase II or Analysis of Brownfields Cleanup Alternatives) was left to the property owner, unless no further action (NFA) was recommended. These ESA reports were supplied to the property owner since Phase I ESAs are often required as part of a property transaction for commercial or industrial properties.

By participating in the grant, landowners benefit from having the costs of investigations and cleanup defrayed, easing the property transaction process, receiving assistance in marketing the property to interested buyers or developers, and building enhanced property values by eliminating or resolving any perceived stigma of a brownfields site.

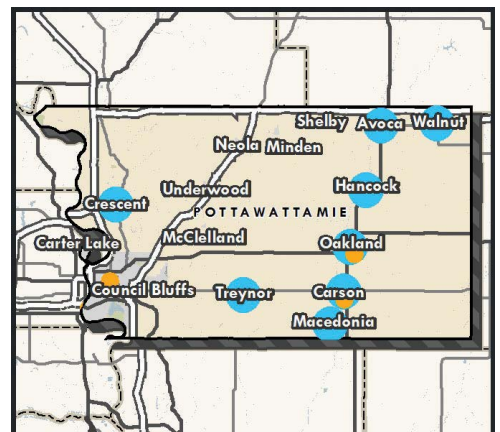
Douglas County

- Hosted open house for Nebraska legislators and legislative candidates in October.
- Implemented Citizen Academy for Omaha's Future with partnering agencies during October.
- Partnered with Omaha by Design and Greater Omaha Chamber to host presentation by Bruce Katz of the Brookings Institution on revitalization efforts in metropolitan areas nationwide.
- Provided pass-through funding to Omaha Public Works and Planning Departments, Douglas County GIS, and Metro Transit.
- Rolled out Heartland 2050 regional vision in November.
- Quarterly Council of Officials meeting in January 2015 took place in Omaha with guest speaker Omaha Police Chief Todd Schmaderer.
- GIS collaboration with County GIS departments and University of Nebraska Omaha.
- Assisted with facilitation of Integrated Solid Waste Management Plan Task Force.
- Assisted Omaha with Promise Zone application.
- Coordinated with Live Well Omaha to promote Commuter Challenge.
- Coordinated with Omaha Economic Development Corporation on vertical farming project.
- Hosted housing forum with developers, residents and other stakeholders of the Park Avenue Neighborhood in Omaha.
- Held "Making Omaha" event with panel discussion on the importance of a local food system for the economy and neighborhood structure.
- Held Metro Area Motorist Assist (MAMA) volunteer recognition dinner in Omaha, and provided ongoing administration for the program.
- Hosted panel discussion on Refugees and the Transportation system.
- Coordinated Federal-aid transportation projects with Omaha, NDOR, FHWA, and FTA.
- Continued work for Ralston Leadership Community Application.



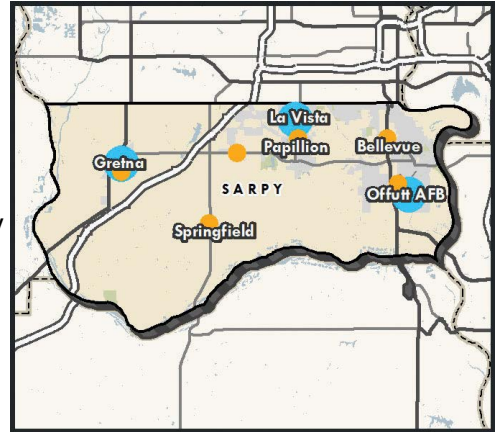
Pottawattamie County

- Provided pass-through funding to Pottawattamie County GIS.
- Held quarterly Council of Officials meeting in April 2015 in Council Bluffs. Google Data Center Operations Manager Chris Russell was guest speaker.
- Completed FY2016-2019 MPO and RPA-18 Transportation Improvement Programs (TIP) and submitted to Iowa DOT for review.
- Kicked off Crescent Comprehensive Plan.
- Continued administration of Community Development Block Grant (CDBG)-funded water treatment plant expansion project in Oakland.
- Continued administration of CDBG awards for Hancock and Macedonia.
- Completed Welmark and Rural Energy for America Program (REAP) grant applications for Carson.
- Provided research for Walnut Downtown Revitalization project.
- Submitted Staffing for Adequate Fire and Emergency Response (SAFER) grant application for City of Avoca for fire suppression equipment and educational materials.
- Coordinated Federal-aid transportation projects with Pottawattamie County communities, Iowa DOT, and FHWA.



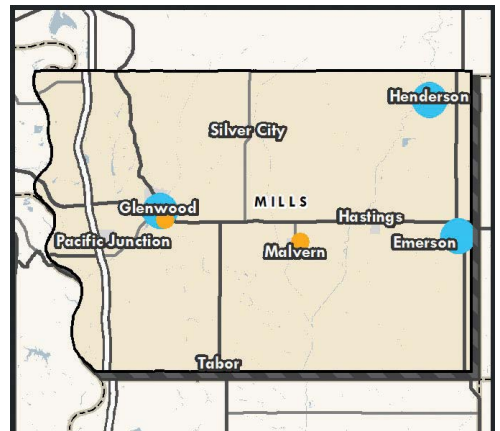
Sarpy County

- Completed Offutt Joint Land Use Study and hosted three public workshops for project.
- Completed Phases I and II of Platteview Road Corridor Study and hosted public meetings.
- Bellevue Mayor Rita Sanders elected to National Association of Regional Councils Board of Directors.
- MAPA featured at a May Omaha Storm Chasers game as Community Organization of the Night.
- Provided pass-through funding to Sarpy County GIS and Planning Departments.
- Assisted Papio-Missouri River Natural Resources District with voluntary property buyouts in flood plain.
- Continued work for City of Gretna Leadership Community Application.
- Continued work on environmental assessment for potential LaVista sanitary/storm sewer relocation project.
- Convened CHI Health panel at Midlands Hospital for Quarterly Council of Officials meeting in July 2015.
- Coordinated Federal-aid transportation projects with Sarpy County Communities, NDOR, FHWA, and FTA.



Mills County

- Completed FY2016-2019 RPA-18 Transportation Improvement Program (TIP) and submitted to Iowa DOT for review.
- Continued administration of CDBG award for Henderson.
- Assisted City of Emerson with grant research and grant application review.
- Coordinated Federal-aid transportation projects with Mills County communities, Iowa DOT, and FHWA.
- Held TEDx workshop in Malvern on topic of local foods, art, culture, and economic development.

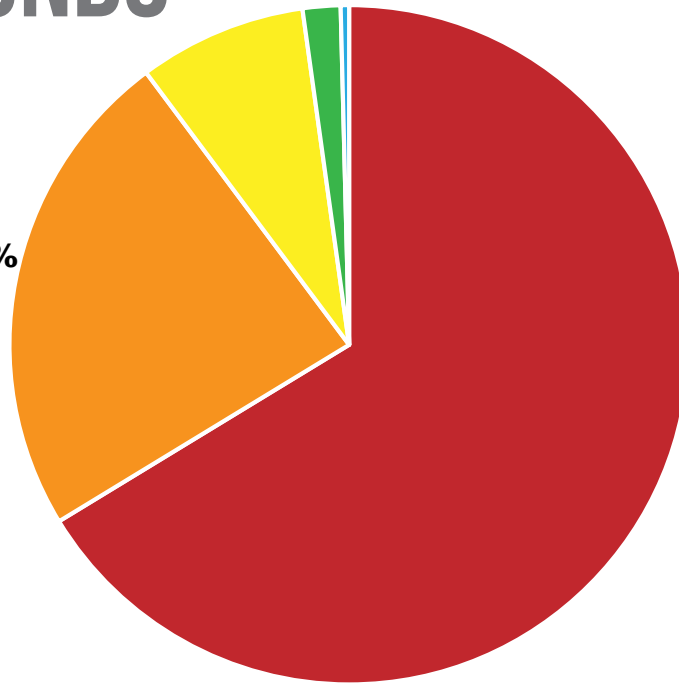
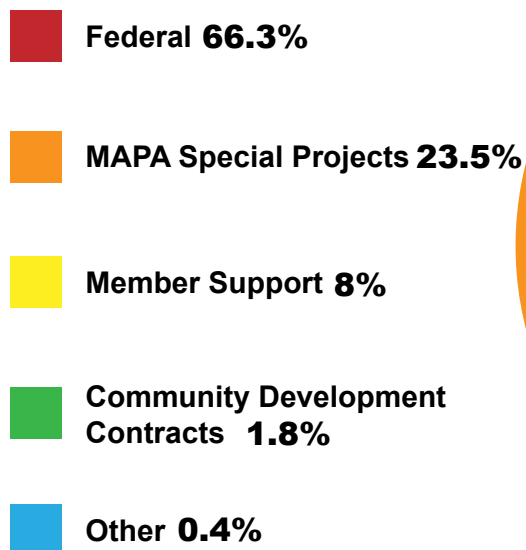


Washington County

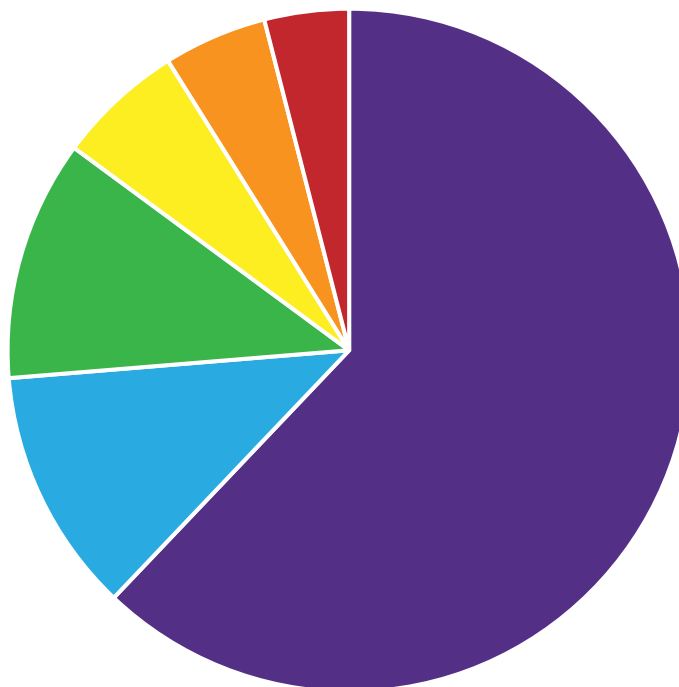
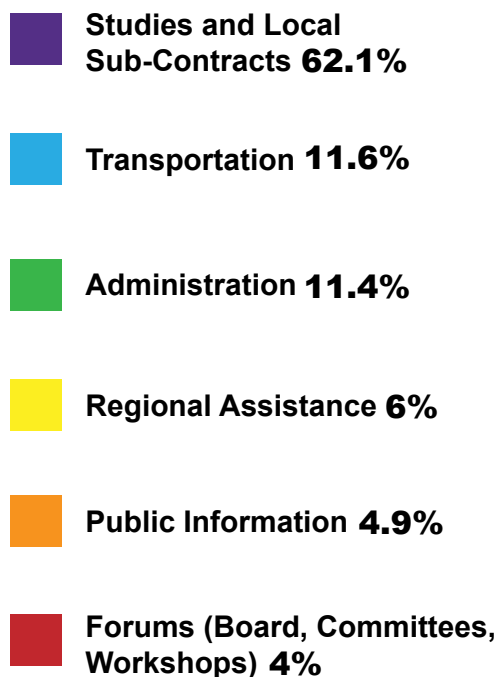
- Hosted Council of Officials Annual Meeting in October 2014 in Blair with Envision Utah president Robert Grow as guest speaker.
- Worked with Arlington to implement village's nuisance ordinance.
- Created Comprehensive Plan for the Village of Kennard.
- Administered Kennard Community Development Block Grant.
- Issued Revolving Loan Fund (RLF) loan to KB Meats in Blair.



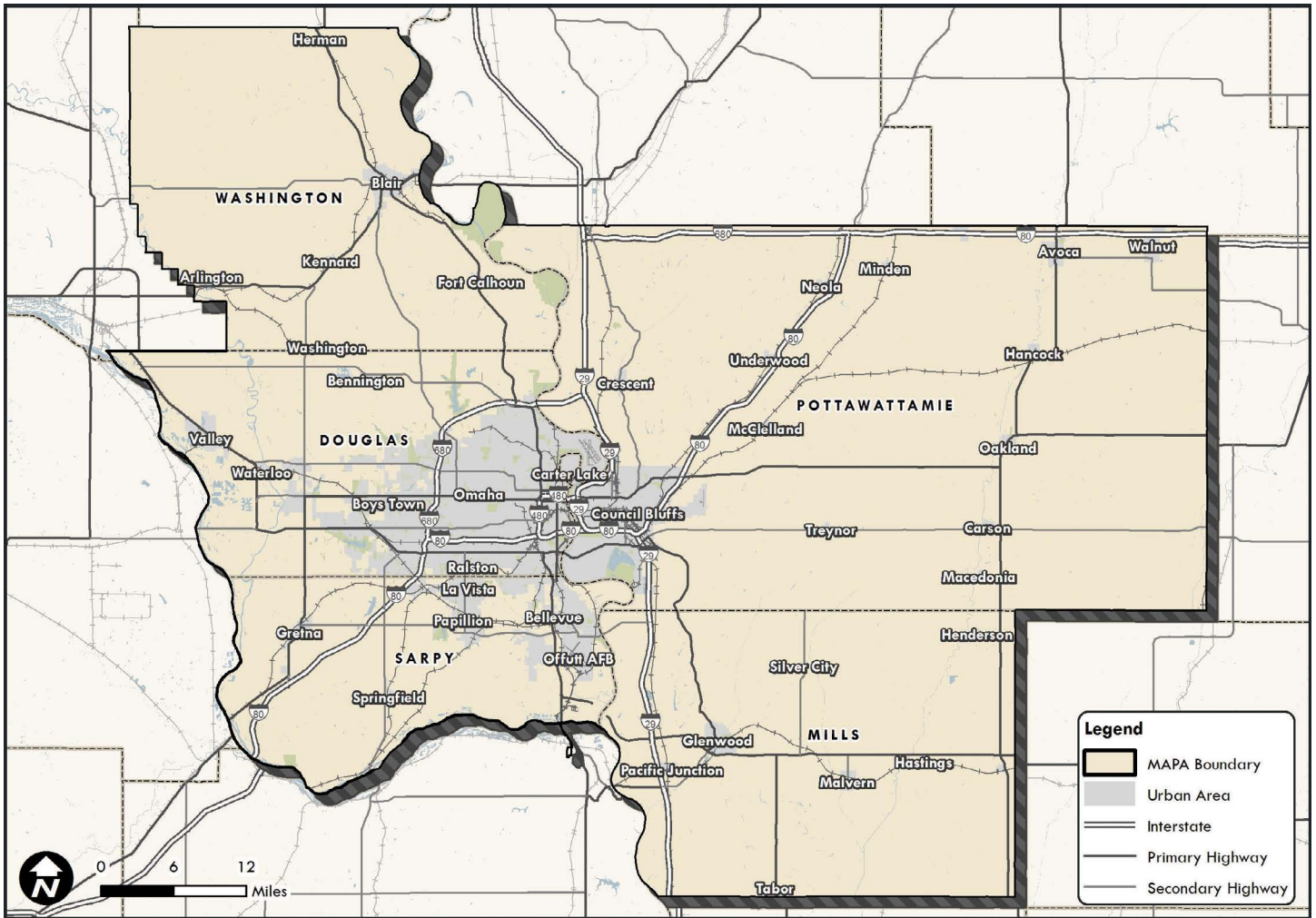
SOURCE OF FUNDS



APPLICATION OF FUNDS



MAPA Region



METROPOLITAN AREA PLANNING AGENCY

2222 Cuming St. Omaha, NE 68102 Phone: 402.444.6866 Fax: 402.951.6517

Email: mapa@mapacog.org Website: mapacog.org Twitter: [@mapacog](https://twitter.com/mapacog)

MAPA STAFF

Greg Youell
Executive Director

Grant Anderson
Community and Economic
Development Planner

Natasha Barrett
Accounting Assistant

Christina Brownell
Administrative Assistant

Josh Corrigan
GIS Coordinator

Sue Cutsforth
Communications Coordinator

Lynn Dittmer
Community and Economic
Development Manager

Melissa Engel
Director of Finance
and Operations

Michael Felschow
Program Director

Michael Helgerson
Transportation Planner

Karna Loewenstein
Heartland 2050 Coordinator

Patti McCoy
Administrative Assistant

Amanda Morales
Fiscal Officer

Ashley Myers
Transportation Planner

Annie Pigaga
Graphics Assistant

Matt Roth
Community and Economic
Development Planner

Clint Sloss*
Heartland 2050 Project Manager

Jeff Spiehs
Community Engagement
Coordinator

Megan Walker
Transportation Planner

Gary Young
Transportation Planner

Rachel Tucker*
Intern

* Employee who contributed to FY2015 programs but is no longer employed at MAPA.

MAPA Council of Officials

Figures in parentheses represent 4/1/2010 Census Bureau population numbers

Nebraska

DOUGLAS COUNTY (531,265)	CLARE DUDA (rep. Board Chairman Mary Ann Borgeson)
Bennington (1,458)	* GORDON MUELLER, Mayor
Boys Town (745)	JOHN MOLLISON (rep. Board Chairman Rev. Steven Boes)
Omaha (408,958)	JEAN STOTHERT, Mayor
Omaha City Council	* BEN GRAY, City Councilmember
Ralston (5,943)	* RICH ONKEN (rep. Mayor Don Groesser)
Valley (1,875)	JOAN SUHR (rep. Mayor Carroll Smith)
Waterloo (848)	STAN BENKE, Village Board Chairman
SARPY COUNTY (158,840)	TOM RICHARDS (rep. Board Chairman Jim Thompson)
Bellevue (50,137)	* RITA SANDERS, Mayor
Gretna (4,441)	* JEFF KOOISTRA (rep. Mayor Jim Timmerman)
La Vista (15,758)	DOUG KINDIG, Mayor
Papillion (18,894)	* DAVID BLACK, Mayor
Springfield (1,529)	MIKE DILL, Mayor
WASHINGTON COUNTY (20,234)	CARL LORENZEN, Supervisor (rep. Board Chairman Jeff Quist)
Arlington (1,243)	TOM BROWN, Village Board Chairman
Blair (7,990)	JIM REALPH, Mayor
Fort Calhoun (908)	DAVID GENOWAYS (rep. Mayor Mitch Robinson)
Herman (268)	THOMAS KEGLER, Village Board Chairman
Kennard (361)	GEORGE PEARSON, Village Board Chairman
Washington (155)	LOUIS KOLOGENSKI (Board of Trustees)

Iowa

MILLS COUNTY (15,059)	* RON KOHN, Board Chairman
Emerson (438)	ROB ERICKSON, Mayor
Glenwood (5,269)	KIM CLARK, Mayor
Hastings (152)	RODNEY W. COURTIER, Mayor
Henderson (185)	MICHAEL BAUMFALK, Mayor
Malvern (1,142)	MICHAEL K. BLACKBURN, Mayor
Pacific Junction (471)	ANDY YOUNG, Mayor
Silver City (275)	GARY FRANKFORTER, Mayor
POTTAWATTAMIE COUNTY (93,158)	* SCOTT BELT, Board Chairman
Avoca (1,506)	JENNIE MAASSEN, Mayor
Carson (812)	TROY GRAVES, Mayor
Carter Lake (3,785)	GERALD WALTRIP, Mayor
Council Bluffs (62,230)	* MATTHEW J. WALSH, Mayor
Crescent (617)	BRIAN SHEA, Mayor
Hancock (196)	JEFF GRESS, Mayor
Macedonia (246)	EILEEN C. ADICKES, Mayor
McClelland (151)	EMMET DOFNER, Mayor
Minden (599)	RICHARD ARMSTRONG, Mayor
Neola (842)	SCOTT BROOKS, Mayor
Oakland (1,527)	MICHAEL O'BRIEN, Mayor
Treynor (919)	BRYCE POLAND, Mayor
Underwood (917)	DENNIS BARDSLEY, Mayor
Walnut (785)	GENE LARSEN, Mayor

SPECIAL PURPOSE GOVERNMENTAL ENTITIES

Bellevue Public Schools	NINA WOLFORD, Board President
Council Bluffs Airport Authority	ANDY BILLER (rep. Board President John Dalton)
Council Bluffs Planning Commission	MIKAYLA HOLTZ, Board Chairman
Fremont School District	MARK SHEPARD, Superintendent
Golden Hills Resource Conservation & Development	BARRY DEUEL, Board Chairman
Iowa Western Community College	RANDY PASH, Board Chairman
Metro	AMY HAASE, Board Chairman
Metropolitan Utilities District	SCOTT KEEP (rep. Board Chairman Mike McGowan)
Metropolitan Community College	RON HUG, (rep. Board Chairman Linda McDermitt)
Millard Public Schools	JIM SUTFIN, Superintendent
Millard Suburban Fire District	KEVIN EDWARDS, Fire Chief (rep. Board President Jennifer Nienaber)
Omaha Airport Authority	DAN OWENS (rep. Board Chairman Eric Butler)
Omaha Housing Authority	KAREN WATSON, Board Vice-Chair
Omaha Planning Board	ANNA NUBEL, Board Chairman
Omaha Public Power District	TOM RICHARDS (rep. Board Chairman NP Sandy Dodge)
Papillion-La Vista Public Schools	ANDREW RIKLI, Superintendent
Papio Missouri River NRD	FRED CONLEY, Board Chairman
Pony Creek Drainage District	JAY CHRISTENSEN, Board Chairman
Ralston Public Schools	LINDA RICHARDS, Board President
Valley Fire District #5	AARON UECKERT, Board President

* Board Members

Board Chairman	RON KOHN
Board Vice-Chairman	RITA SANDERS
Secretary-Treasurer	PATRICK BLOOMINGDALE
Legal Counsel	PAUL KRATZ (City of Omaha)

The preparation of this publication is financed through planning grants from the U.S. Dept. of Transportation through Iowa DOT and the Nebraska Dept. of Roads as Provided by the Federal Highway Administration, the Federal Transit Administration and the Economic Development Administration and through local funds from member jurisdictions. The views and opinions MAPA expressed herein do not necessarily state or reflect those of the U.S. Department of Transportation or the Economic Development Administration.



U.S. Department of Transportation
Federal Highway Administration