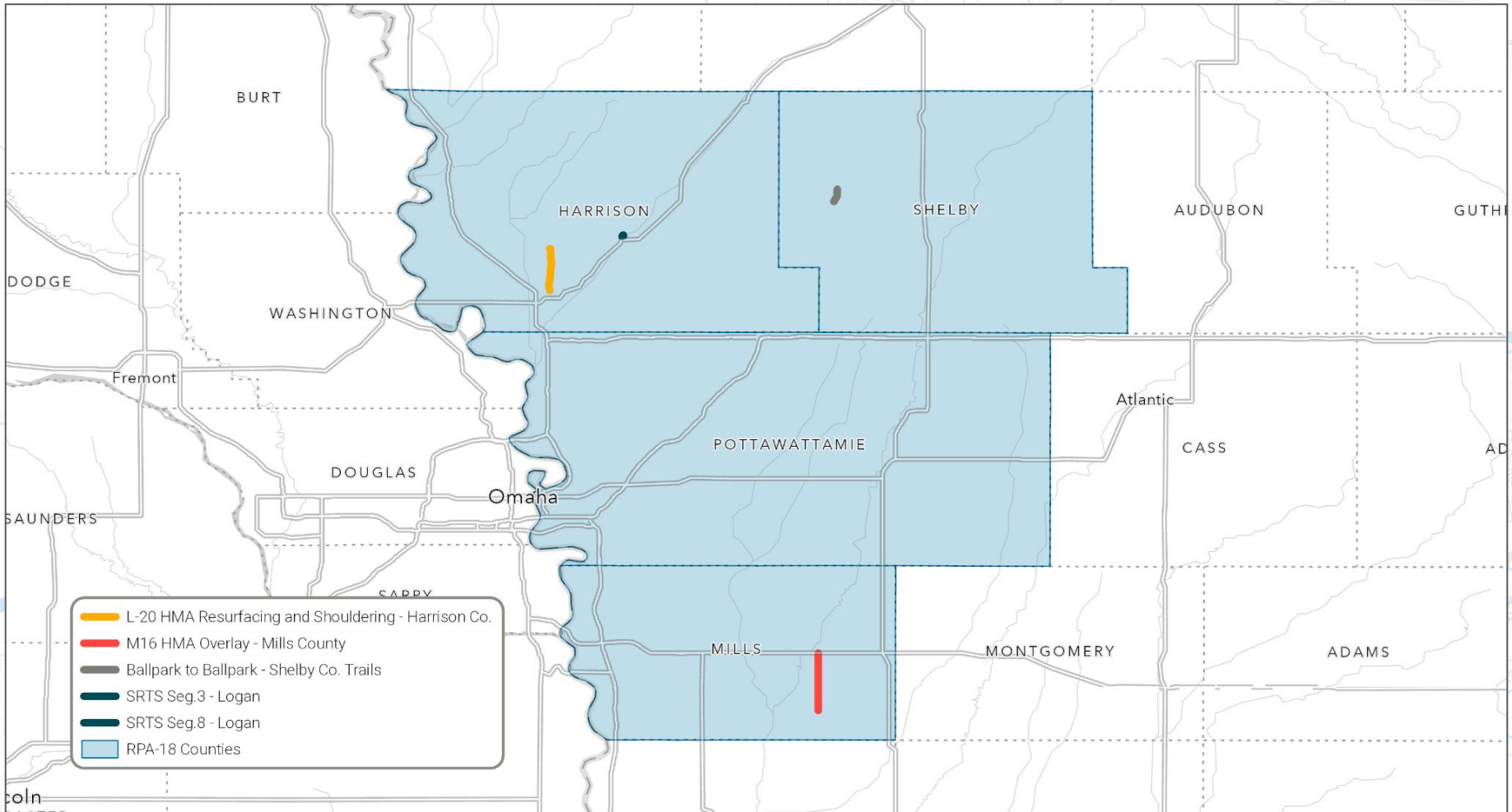









2024 STBG and TASA project applications

RPA-18



-  L-20 HMA Resurfacing and Shouldering - Harrison Co.
-  M16 HMA Overlay - Mills County
-  Ballpark to Ballpark - Shelby Co. Trails
-  SRTS Seg.3 - Logan
-  SRTS Seg.8 - Logan
-  RPA-18 Counties



Title: M16 Asphalt Overlay

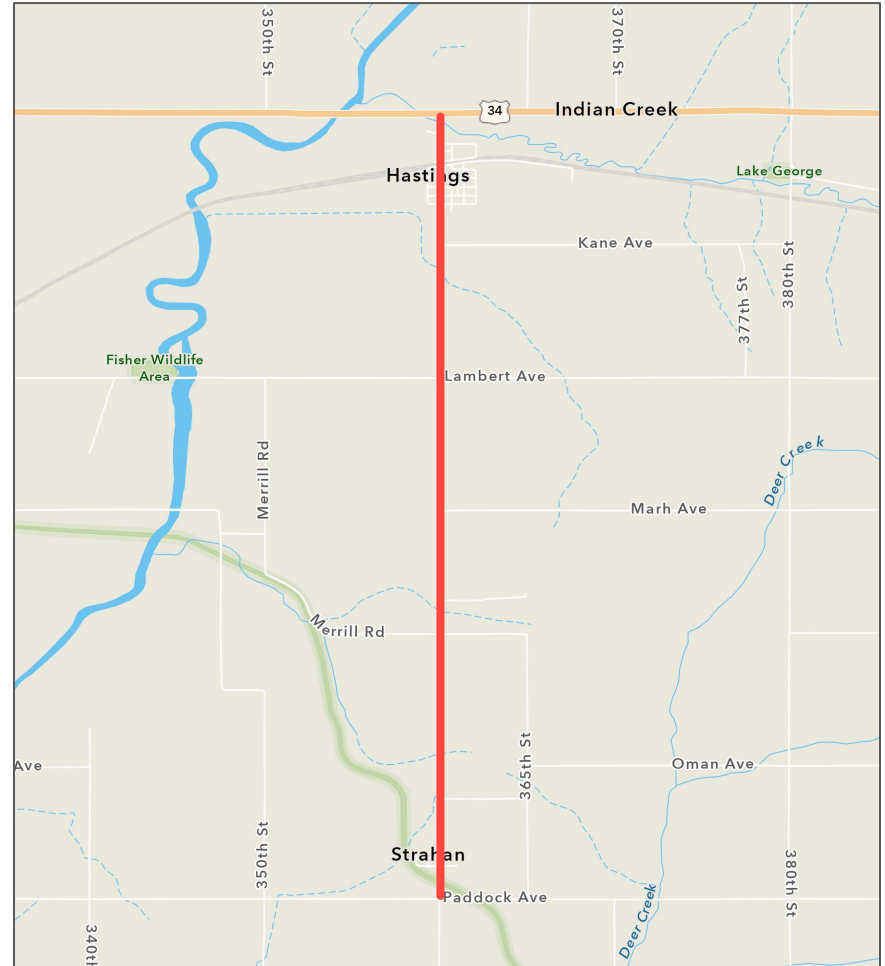
Sponsor: Mills County

Classification: Highway

Fund Request: \$1,100,000 STBG

Description:

Rehabilitation of existing concrete road (M-16) with an asphalt overlay from US Hwy 34, south 5.9 miles to H46 (Paddock Ave.)



Title: L-20 Asphalt Resurfacing & Shouldering

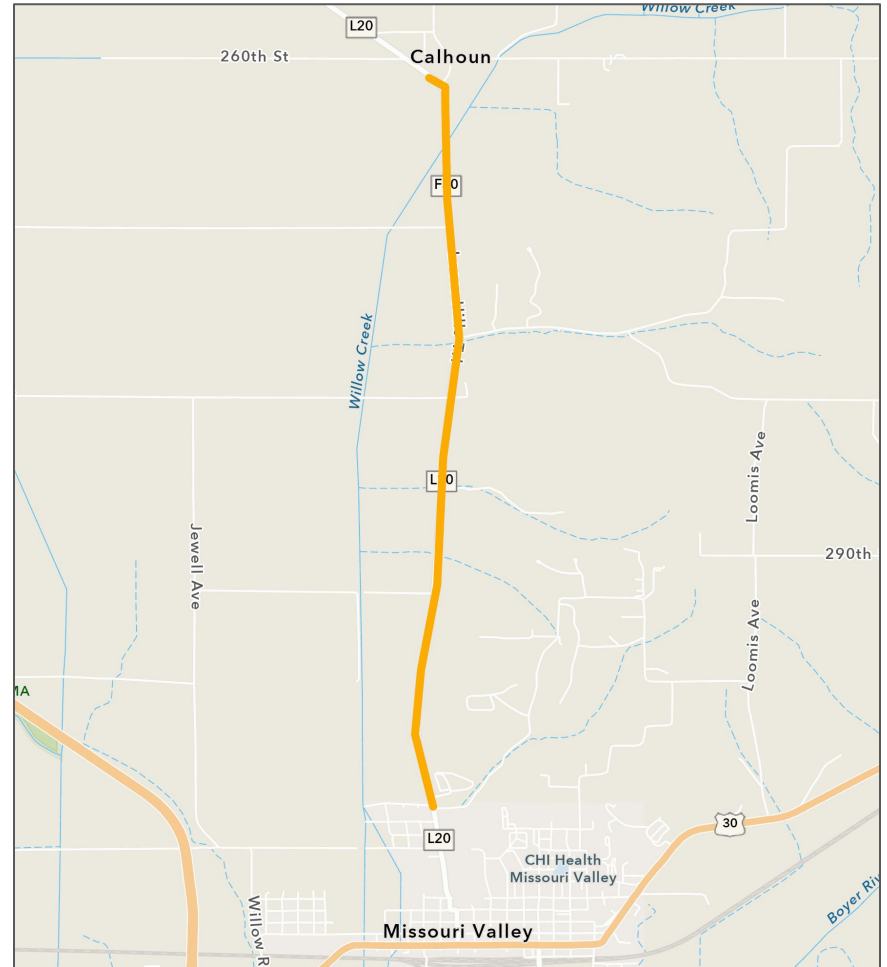
Sponsor: Harrison County

Classification: Highway

Fund Request: \$600,000 STBG

Description:

Asphalt resurfacing of L-20 with granular or paved shoulders on sections without paved shoulders from north corporate Missouri Valley, south 5.3 miles to the intersection of L-20 and L-23.



Title: Safe Routes to School (SRTS) & Recreational Trails - Phase 01

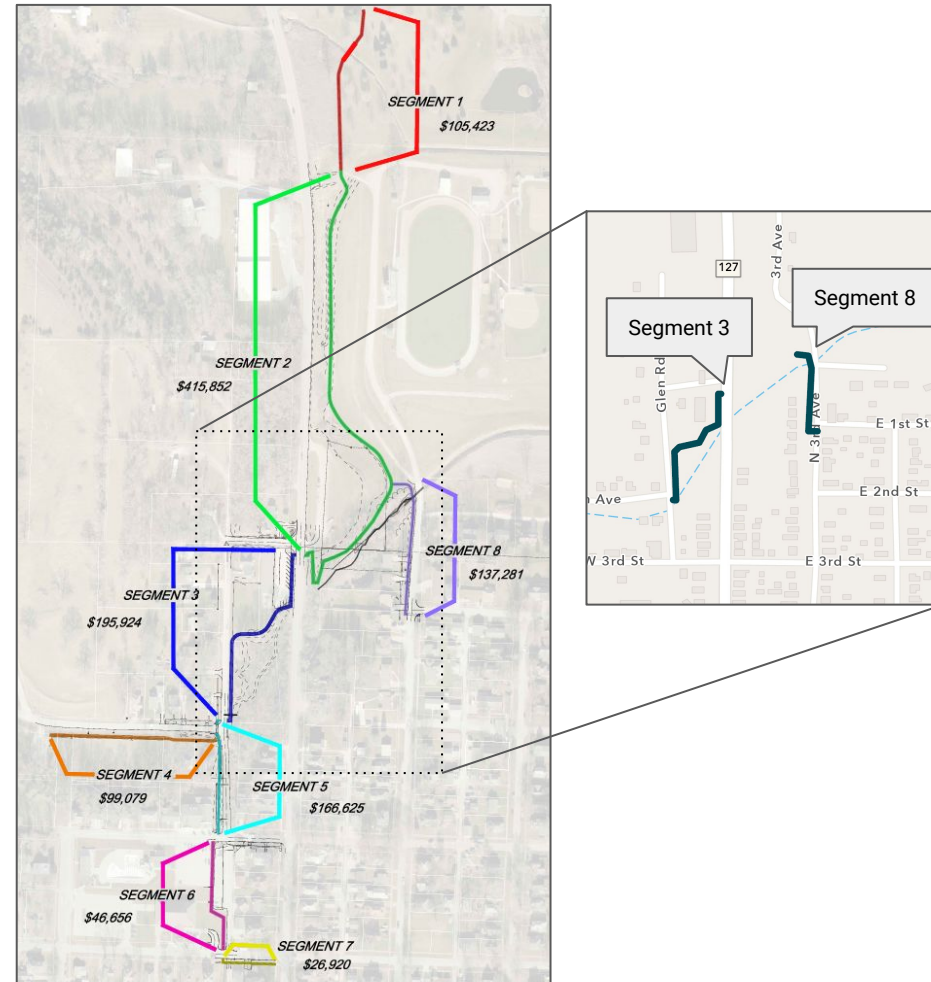
Sponsor: City of Logan

Classification: SRTS

Fund Request: \$333,205 TASA

Description:

Final design and construction of the project includes establishing an 8' concrete trail from mainstream Logan to Logan-Magnolia CSD while also providing a safe crossing on heavily trafficked State Hwy 127. The City of Logan is seeking regional TASA funds for segments 3 and 8 of this trail project.



Title: Ballpark to Ballpark Trail - phase II

Sponsor: Shelby Co. Trails Board

Classification: Recreational Trails

Fund Request: \$309,618 TASA or STBG

Description:

Construction of a 10' wide multi-use trail starting at F32 and proceeding to 1380th St. in Shelby County. This is phase 2 of the ballpark to ballpark trail in Shelby County.

