

APPENDIX G. TRAFFIC OPERATIONS DOCUMENTS

- ▶ Bellevue Bridge Roadway Capacities Analysis
- ▶ Bellevue Bridge Travelsheds
- ▶ US 34 Bridge Travelsheds
- ▶ Time Cost of Closure of the Bellevue Bridge

BELLEVUE

BRIDGE ALTERNATIVES STUDY

Roadway Capacities Analysis

From Omaha Master Plan – Transportation Element

LOS A - B: Volume-to-capacity ratio is less than 0.5

LOS C: Volume-to-capacity ratio at least 0.5 but less than 0.7

LOS D: Volume-to-capacity ratio at least 0.7 but less than 0.85

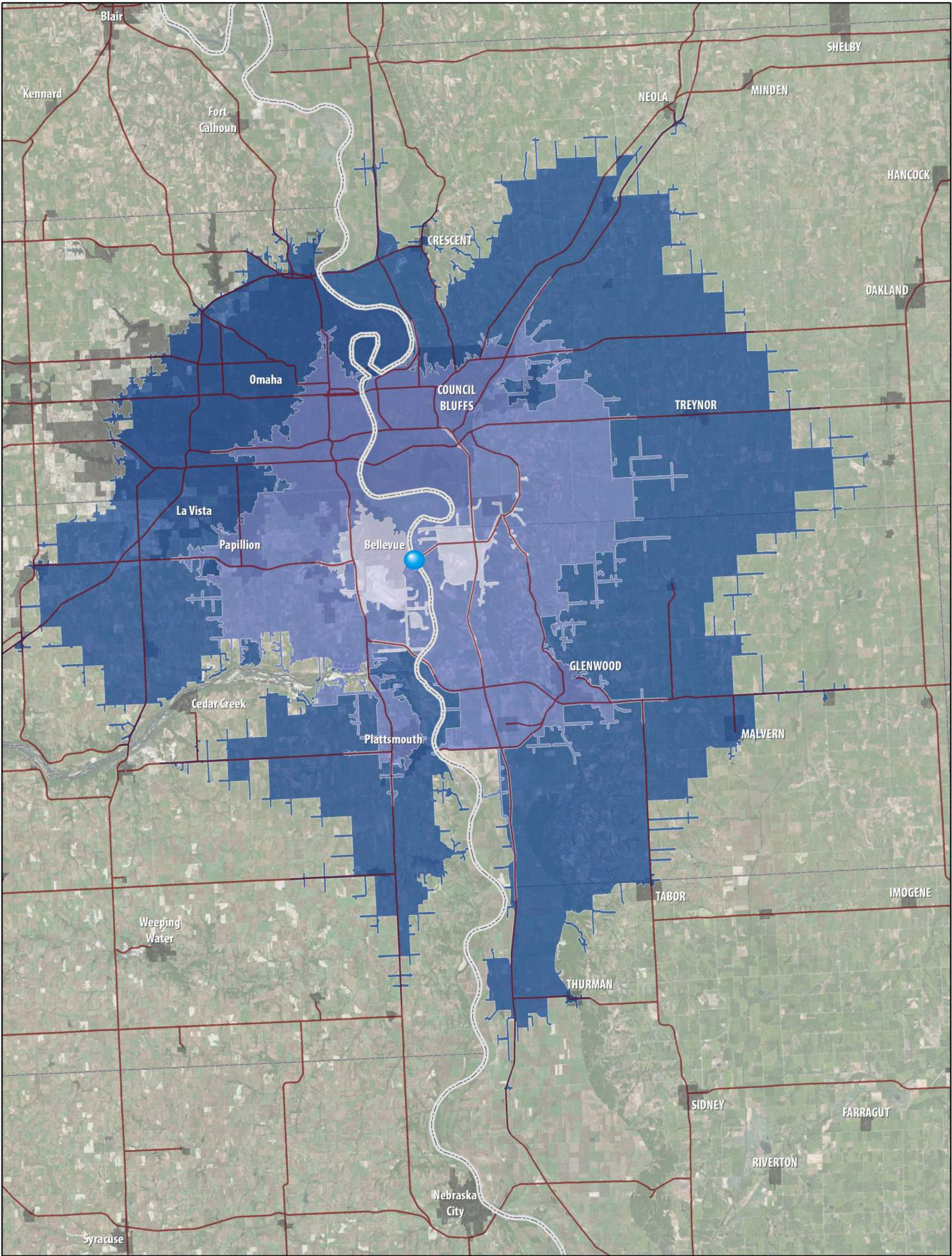
LOS E: Volume-to-capacity ratio at least 0.85 but less than 1.0

LOS F: Volume-to-capacity ratio is 1.0 or greater


| Bellevue Bridge Study | | | | ADT | V/C | LOS | ADT | V/C | LOS | MAPA LOS E Threshold |
|----------------------------------|------------|-----------------------------------|-------------|--------|-------|------|--------|-------|------|----------------------|
| Location | Scenario | Facility Type/Diversion | Speed Limit | 2018 | Ratio | 2018 | 2040 | Ratio | 2040 | (upper limit) |
| E. Mission Ave / Bellevue Bridge | Existing | 2 - Lane Urban Bridge | 35 MPH | 2,122 | 0.16 | A | 5,000 | 0.37 | B | 13,400 |
| | Scenario 1 | No Bridge | 35 MPH | - | 0.00 | A | - | 0.00 | A | - |
| | Scenario 2 | No Bridge | 35 MPH | - | 0.00 | A | - | 0.00 | A | - |
| Highway 275 River Crossing | Existing | 4 - Lane Urban Bridge | 45 MPH | 9,600 | 0.32 | B | 14,300 | 0.48 | B | 30,000 |
| | Scenario 1 | 100% traffic from Bellevue Bridge | 45 MPH | 11,722 | 0.39 | B | 19,300 | 0.64 | C | 30,000 |
| | Scenario 2 | 0% traffic from Bellevue Bridge | 45 MPH | 9,600 | 0.32 | B | 14,300 | 0.48 | B | 30,000 |
| Highway 34 River Crossing | Existing | 4 - Lane Urban Bridge | 65 MPH | 7,700 | 0.26 | B | 11,400 | 0.38 | B | 30,000 |
| | Scenario 1 | 0% traffic from Bellevue Bridge | 65 MPH | 7,700 | 0.26 | B | 11,400 | 0.38 | B | 30,000 |
| | Scenario 2 | 100% traffic from Bellevue Bridge | 65 MPH | 9,822 | 0.33 | B | 16,400 | 0.55 | C | 30,000 |


10, 20, and 30 Minute Travelsheds from Grand Army of the Republic/Bellevue Bridge


Reflecting May 14, 2018 Traffic Conditions at 8:00 AM





Legend


 10-Minute Travelshed


 20-Minute Travelshed

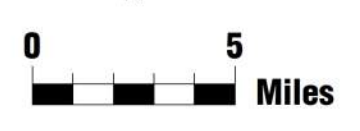
 30-Minute Travelshed

 Grand Army of the Republic/Bellevue Bridge

 Cities

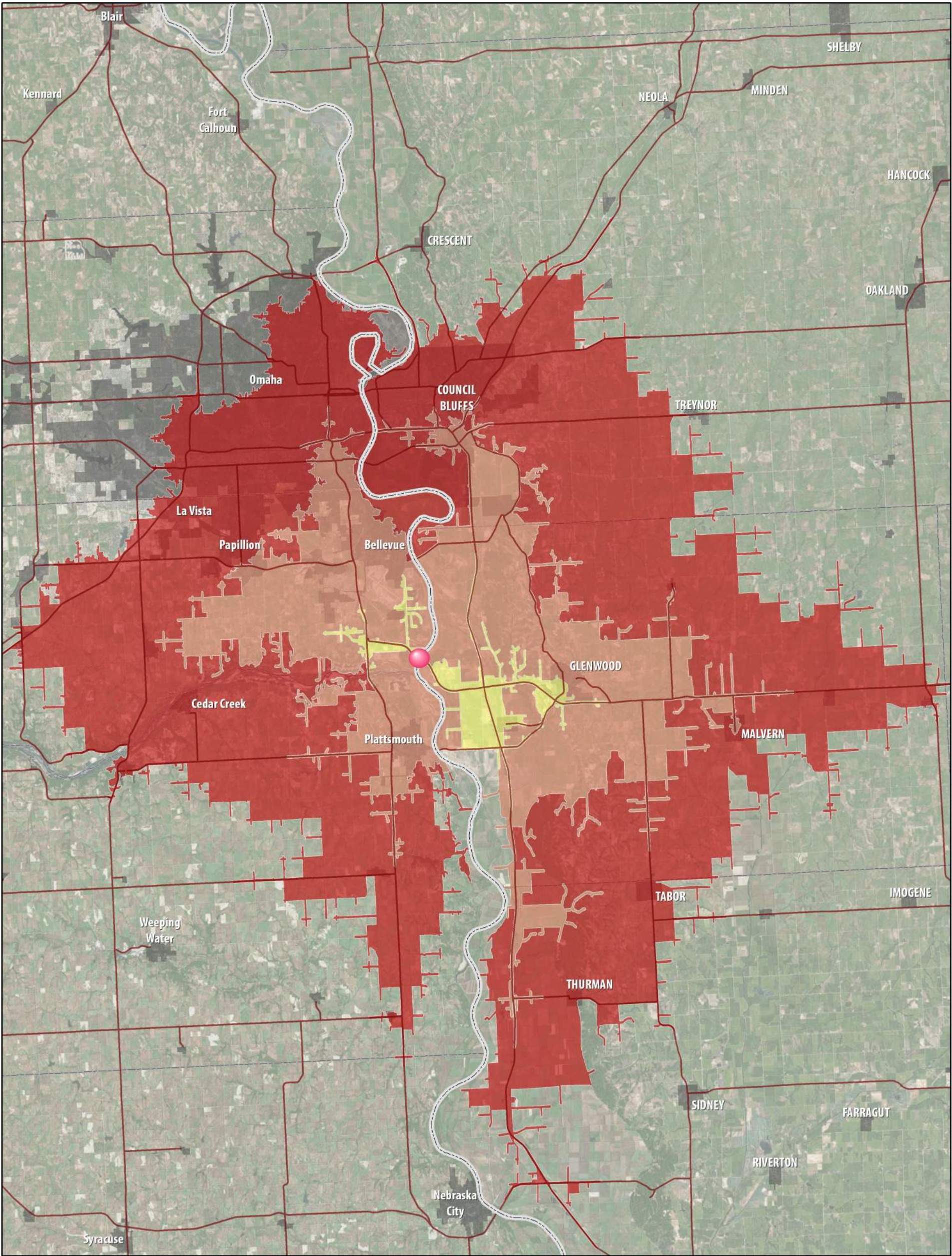
 Highways

 N

 0 5 Miles

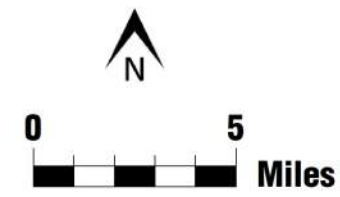
10, 20, and 30 Minute Travelsheds from Highway 34 Missouri River Bridge

Reflecting May 14, 2018 Traffic Conditions at 8:00 AM



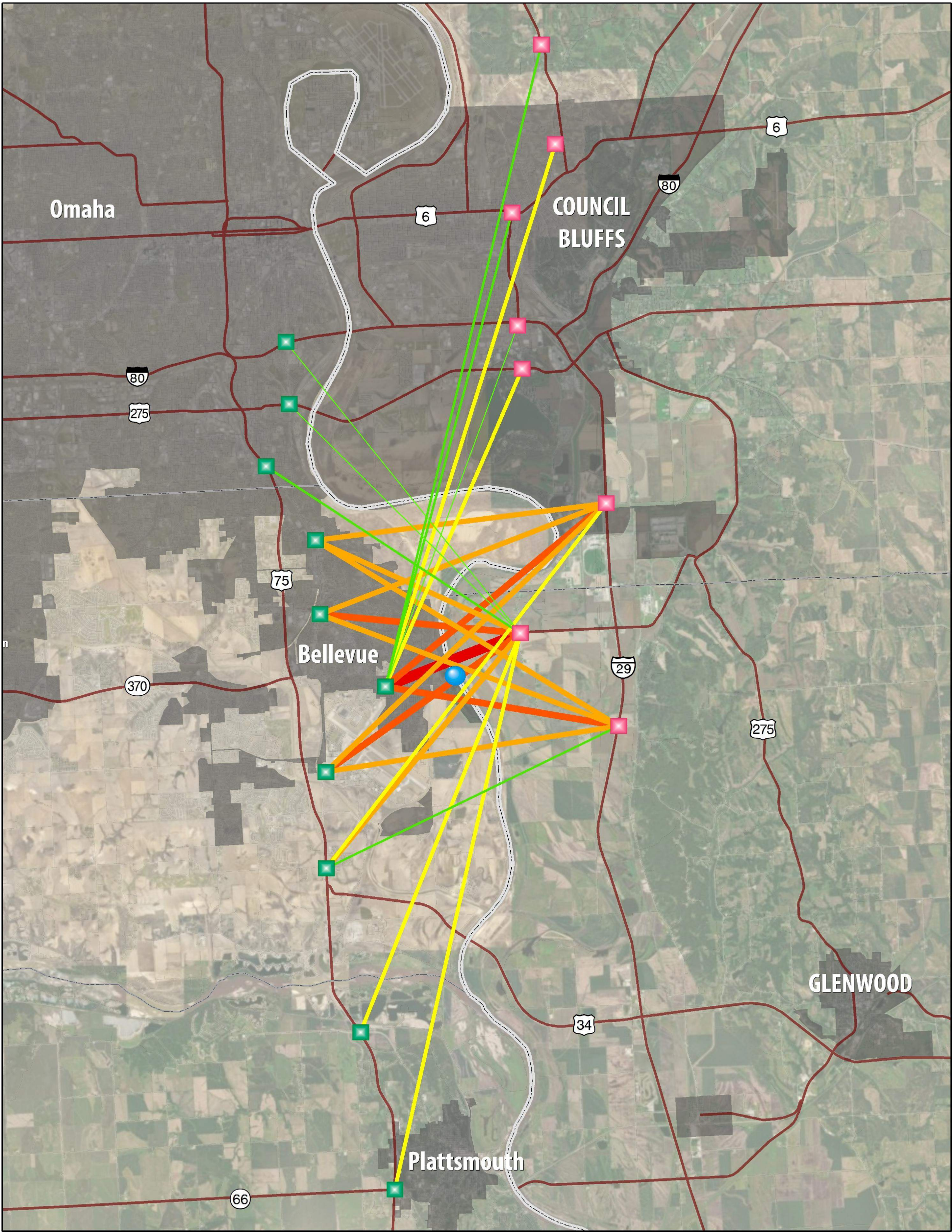
Legend

- 10-Minute Travelshed
- 20-Minute Travelshed
- 30-Minute Travelshed
- Hwy 34 Missouri River Bridge
- Cities
- Highways



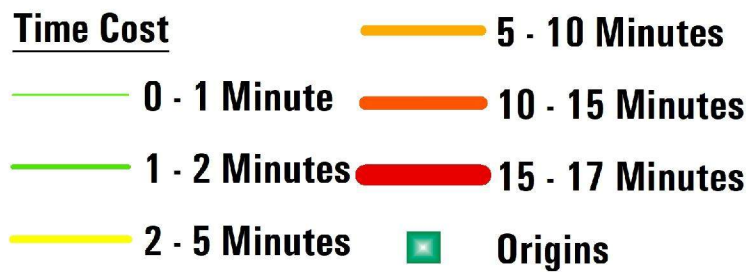
Time Cost of Closure of the Grand Army of the Republic/Bellevue Bridge

Reflecting May 16, 2018 Traffic Conditions at 8:00 AM



Legend

Time Cost



Origins

