

What's Happening

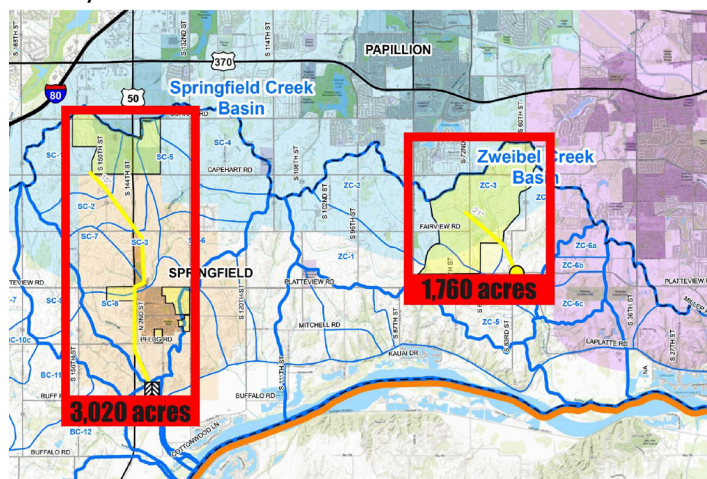
For Community Leaders

September/October 2018

Sarpy Wastewater Agency picks two new growth areas

Many communities face challenges in expanding their tax bases and increasing economic development opportunities. For Sarpy County, that challenge comes in the form of a natural ridgeline which divides the County from east to west, separating the Papio watershed to the north from the Platte River watershed in southern Sarpy County.

The ridgeline left 60 percent of the land undevelopable because a sewer system was lacking in southern Sarpy County.



This situation created a large barrier to future economic growth for the fastest-growing county in Nebraska. Without a sewer system, the rate of land consumption by large lot and acreage development could consume all the developable land in southern Sarpy County within a few years.

To open the door to future development, Sarpy County and the Cities of Sarpy County established the Sarpy County and Sarpy Cities Wastewater Agency, with legislative assistance from State Sen. Sue Crawford of Bellevue, who sponsored LB 253 in the Nebraska Unicameral to create the new regional agency, which will build a new regional sewer system.

In September, the agency voted to open up the first two areas for future service and growth. The first 3,020 acres will be opened in the Springfield Creek Basin along State Highway 50 (144th Street). Additionally, 1,760 acres are slated for service in the Zweibel Creek Basin between Capehart and Platteview Roads west of 60th Street.

“Sarpy County is primed for rapid growth and expansion, and the Wastewater Agency is key to guiding and developing that growth in an organized way,” said Sarpy County Board Chairman Don Kelly, who sits on the Wastewater Agency’s Board.

Based on the development expected with the creation of a sewer system, the County anticipates it generating incremental annual revenue of:

\$15 MILLION PER YEAR IN SALES TAX REVENUE FOR SARPY COUNTY CITIES

\$45 MILLION PER YEAR IN SALES TAX REVENUE FOR THE STATE OF NEBRASKA

\$19 MILLION PER YEAR IN PROPERTY TAX REVENUE FOR SARPY COUNTY CITIES

\$21 MILLION PER YEAR IN PROPERTY TAX REVENUE FOR SARPY COUNTY

\$76 MILLION PER YEAR IN PROPERTY TAX REVENUE FOR LOCAL SCHOOL DISTRICTS

“The lack of a unified sewer system is a regional issue, one that’s too big for a single government entity to solve alone. But by combining the efforts of Sarpy County and each of the five cities, we’re able to address it in a way that benefits the entire County, really the entire state,” said Kelly.

Sarpy County and Sarpy Cities Wastewater Agency was awarded a MAPA 2018 Regional Service Award as a prime example of proactive planning and regional collaboration. Other recipients of MAPA’s 2018 Annual Awards can be found on the back page of this newsletter.

Area leaders learn Pittsburgh's approach to enhanced transit

On Oct. 21, business, government and nonprofit leaders from the Omaha-Council Bluffs region, along with MAPA staff, traveled to Pittsburgh to attend Rail-Volution, an annual conference focused on sharing ideas about building livable communities with transit.

The 36-member group also met with local representatives from the Port Authority, Pittsburgh's transit authority, Pittsburgh Department of City Planning, Duquesne University and InnovatePGH.

Rail-Volution included a variety of mobile workshops, which took participants throughout Pittsburgh to see examples of placemaking, transit service to isolated neighborhoods, light rail transit, transit-oriented development and designated busways.

Pittsburgh Mayor Bill Peduto and Allegheny County Executive Rich Fitzgerald shared Pittsburgh's story of its renaissance following the steel industry collapse in 1979, but acknowledged the region must go further to provide equal access to opportunities for all, and transportation is key.

Keynote speakers, including Jarrett Walker, an international authority on public transit and design, emphasized that public transit is best when it's designed around those who use it.

City leaders also demonstrated how the city engages stakeholders and the community for the upcoming BRT installation with a planning model that incorporates sustainability, innovative development practices and inclusive job growth.



Rail-Volution attendees hear about the upcoming bus rapid transit project in Pittsburgh's Oakland neighborhood from the City of Pittsburgh Planning Department and InnovatePGH.

Transit Return on Investment Study looks at metro commuters

Twenty-one percent of transit riders in the Omaha-Council Bluffs metro area do not have an alternative way of making their trips other than transit. That's one of several findings presented at the Oct. 11 stakeholders' meeting for the Transit Return on Investment (ROI) Study.

The Transit ROI Study is gathering data about area commuters and examining ways to build the business

case to support investments in enhanced transit in the Omaha-Council Bluffs metro region. Stakeholders include leaders in business, government and nonprofit organizations.

Two more stakeholder meetings are planned for November and December 2018.

Transit trips are not limited to people dependent on transit. A rider survey by Metro Transit found 16 percent of transit users in the Omaha-Council Bluffs metro area have a vehicle available but choose to ride the bus instead. In addition, the survey found some people using transit would have a shorter commute through carpooling but ride the bus due to other amenities and conveniences.

The second stakeholder meeting on Oct. 11 focused on the role of transit today, and how the region would be impacted if transit service wasn't available.

Future stakeholder meetings will focus on the impacts that additional investment in transit could provide to the regional economy-including increased access to employment, educational opportunities, and expanding transportation options for residents.



Stakeholders for the Transit ROI study were presented with data about commuters in the Omaha-Council Bluffs metro area at the Oct. 11 meeting. Their goal is to build the business case for enhanced transit.

Students monitor air quality for projects

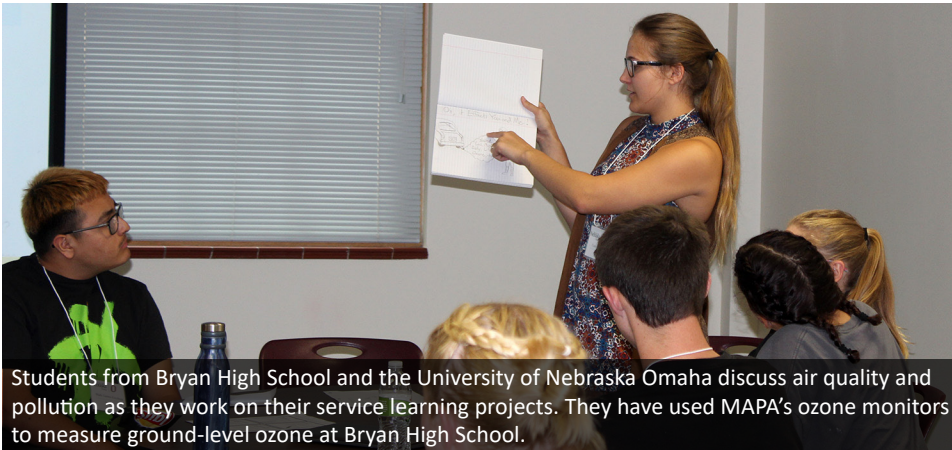
In September, MAPA began participating in a service learning project with Omaha's Bryan High School science students and students from the University of Nebraska Omaha.

During the past month, the students have been learning about air quality and air pollution, and are collaborating on projects they hope to implement at their campuses to

raise awareness about air pollution in the Omaha-Council Bluffs region.

Students used MAPA's ozone monitors, loaned as part of the agency's Little Steps Big Impact campaign, to measure concentrations of ground-level ozone outside Bryan High School.

The groups will present their projects in December.



Students from Bryan High School and the University of Nebraska Omaha discuss air quality and pollution as they work on their service learning projects. They have used MAPA's ozone monitors to measure ground-level ozone at Bryan High School.

West Papio Trail extension unveiled

The Papio-Missouri River Natural Resources District, the City of Omaha and the City of La Vista worked together to open a three mile extension to the West Papio Trail. The segment connects West Omaha to Bellevue. A ribbon cutting took place on Oct. 9 in Millard at the trailhead.



CALENDAR

November 2018

- Nov. 4th – Daylight Saving Time ends
Set clocks back one hour
- Nov. 6th – General Election
Iowa and Nebraska
- Nov. 12th – Veterans Day observed
MAPA offices closed
- Nov. 14th – RPA-18
11 a.m.

Council of Officials
11:30 a.m.
- Nov. 22nd – Thanksgiving Day
MAPA offices closed
- Nov. 23rd – MAPA offices closed
- Nov. 28th – Finance Committee
8:30 a.m.

Coordinated Transit
10:30 a.m.
- Nov. 30th – Transportation
10 a.m.

December 2018

- Dec. 2nd – Hanukkah begins
- Dec. 6th – MAPA Board of Directors
1:30 p.m.
- Dec. 7th – Heartland 2050 Regional
Planning Advisory Committee
10 a.m.

Pearl Harbor
Remembrance Day
- Dec. 12th – RPA-18
11 a.m.

Nebraska Association of
County Officials (NACO)
Annual Conference
Kearney, NE
Dec. 12 - 14
- Dec. 24th – Christmas Eve
MAPA offices closed
- Dec. 25th – Christmas Day
MAPA offices closed
- Dec. 26th – Kwanzaa begins

MAPA announces Regional Service and Citizenship Awards

MAPA handed out its Regional Citizenship and Regional Service Awards at its annual Council of Officials meeting on Oct. 3.

Heartland Family Service Ways to Work Program Coordinator Lisa Picker received the Regional Citizenship Award. Picker's leadership led MAPA's Coordinated Transit Committee (CTC) beyond administering transportation funds, and now it focuses on advocating for transportation access for the elderly, disabled and those without transportation.

The University of Nebraska Medical Center/Nebraska Medicine received a Regional Service Award for its TravelSmart program. Implementing the program in 2015, TravelSmart encourages alternative modes of commuting by providing free tools and services that promote cycling, carpooling, busing and walking.

The Sarpy County and Sarpy Cities Wastewater Agency received a Regional Service Award for establishing a Wastewater Agency that will provide for a new sewer system in southern Sarpy County.

Congratulations to all recipients of these awards.



Metropolitan Area Planning Agency

2222 Cuming St., Omaha, NE 68102-4328

P: 402.444.6866 F: 402.951.6517

Email: mapa@mapacog.org

MAPA is an EOE/DBE employer



The preparation of this publication is financed through planning grants from the U.S. Dept. of Transportation through Iowa DOT and the Nebraska Dept. of Roads as provided by the Federal Highway Administration and Federal Transit Administration and through local funds from member jurisdictions. The views and opinions MAPA expressed herein do not necessarily state or reflect those of the U.S. Department of Transportation.