

Estimated percent change in volume 2014-2016

“Continued new development in the western portions of Douglas and Sarpy Counties has a direct effect on growth in traffic volumes and the length of distances residents are traveling for their commutes,” said Greg Youell, MAPA Executive Director.

Councilmember Vinny Palermo joins MAPA Board of Directors

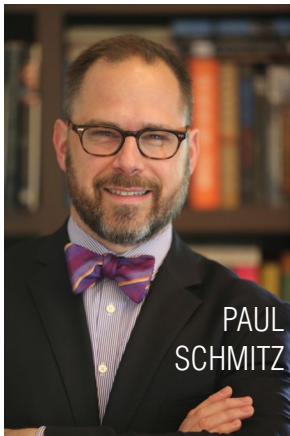
MAPA welcomes its newest member, Omaha City Councilmember Vinny Palermo. Palermo was born and raised in South Omaha, and he resides in the St. Stanislaus neighborhood of the city.

Previously, Palermo was the SubDistrict 9 representative on the Omaha Board of Education but resigned to serve as the Omaha City Council District 4 representative after being elected in May 2017. Palermo participated in a MAPA-led trip to Minneapolis-St. Paul, Minnesota in October 2017 to examine the extensive transit initiatives in the Twin Cities and their impacts on economic development and employment.

Palermo says his priorities are continuing to have public safety a top priority, encouraging all forms of economic growth and development with improved public transportation and providing a better quality of life for all citizens of the Omaha community.



Heartland 2050 Summit to focus on power of collaboration



As a community-driven initiative, Heartland 2050 requires the collaboration of individuals, communities and organizations to focus on a common vision for the region. On March 22, Heartland 2050 is celebrating “The Power of Collaboration” at its 2018 Winter Summit.

The event will feature a

keynote and hands-on workshop from speaker Paul Schmitz, the CEO of Leading Inside Out and Senior Advisor at The Collective Impact Forum.

Community leaders will present breakout sessions spotlighting successful collaborative efforts in the Heartland 2050 region.

Register by March 15 at H2050summit.eventbrite.com. The summit runs from 9 a.m. to 2 p.m. March 22 at the Salvation Army Kroc Center located at 2825 Y Street in Omaha.

Eppley Airfield has its busiest year on record in 2017

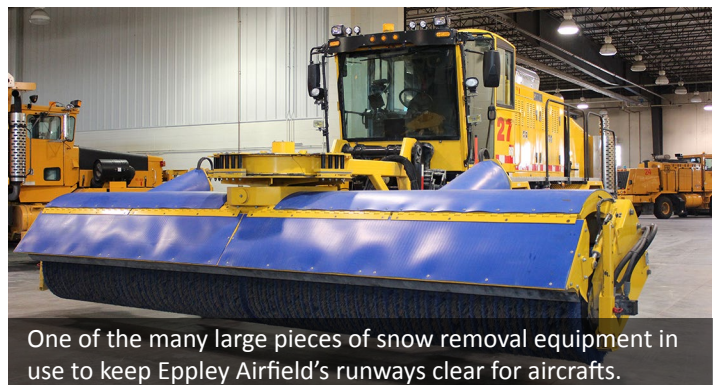
2017 was a record year for Eppley Airfield, the busiest year in the airport’s history. The Omaha Airport Authority reports more 4.6 million passengers flew from Eppley Airfield to their destinations, an increase of 262,420 new passengers since 2016.

Capacity at the airport has grown too. The Omaha Airport Authority cites the number of airline seats available on all flights in 2017 was more than 5.7 million.

In 2018, Eppley Airfield will have 34 non-stop destinations from the airport and will add new routes with Air Canada.

Short-term projects for the Omaha Airport Authority include completing concrete work at the airport,

increasing the number of security checkpoints by adding a fourth checkpoint to the South Terminal, adding a power plant for the North Terminal, Main Terminal reconstruction and finishing the new garage expansion project in the Spring of 2019.



\$500,000 for Parks to People initiative

Southwestern Iowa has taken another step toward creating a connected parks system. The Loess Hills Missouri River Region is designated as the second Parks to People Region in Iowa and is receiving a \$500,000 investment by MidAmerican Energy Foundation. Governor Kim Reynolds traveled to Council Bluffs to make the announcement at a news conference in mid-January.

The Loess Hills Missouri River Region Parks to People initiative aims to leverage public and private resources to attract and retain young professionals interested in an active lifestyle while stimulating Iowa's economy to draw new business. The region includes Harrison, Pottawattamie and Mills Counties in Iowa, connecting from the Loess Hills to the Missouri River.

"Our citizens crave cultural and regional experiences," said

Reynolds. "These hills are alive with incredible people and communities. I can't wait to come back and see all the great projects you are working on."

MidAmerican Energy Foundation's \$500,000 funding commitment will be used for projects identified in the Loess Hills Missouri River Region Plan. Each dollar will be matched with five dollars in additional resources, which leverages the total investment to \$2.5 million.

For more information, visit:

www.goldenhillsrca.org/loess-hills-missouri-river-region-parks-to-people-plan.



Iowa Governor Kim Reynolds attends a news conference for the second Parks to People regional designation in the state.

MTIS analysis shows \$3B shortfall

An analysis for Phase Two of the Metro Area Travel Improvement Study (MTIS) shows a \$3 billion shortfall between projected updates and improvements needed for the Omaha metro area's transportation systems and the funding available to complete them.

MTIS, a joint effort between MAPA and the Nebraska Department of Transportation (NDOT), links future interstate and freeway system needs and arterial, local roads and transit system needs. The purpose of the study is to develop

a comprehensive, multi-modal plan for the region's interstates and major roadways, prioritize projects and begin a discussion for addressing funding shortfalls.

The needs assessment also includes a 40 percent investment in transit, an unprecedented amount to date.

Phase Three of the project is now underway, which will include more detailed planning and will be coordinated with MAPA's Long Range Transportation Plan (LRTP) update.

CALENDAR

March 2018

- Mar. 11th – Daylight Saving Time begins (Set clocks ahead one hour)
- Mar. 14th – RPA-18 11 a.m.
- Mar. 17th – St. Patrick's Day
- Mar. 20th – Spring begins
- Mar. 21st – Finance Committee 8:30 a.m.
Coordinated Transit 10:30 a.m.
- Mar. 22nd – Heartland 2050 Summit Salvation Army Kroc Center 8:30 a.m. - 2 p.m.
- Mar. 23rd – Transportation 10 a.m.
- Mar. 25th – Palm Sunday
- Mar. 29th – MAPA Board of Directors 1:30 p.m.
- Mar. 30th – Passover Good Friday

April 2018

- Apr. 1st – Easter
- Apr. 11th – RPA-18 11 a.m.
Council of Officials Heartland 2050 Executive Committee 8 a.m.
- Apr. 18th – Finance Committee 8:30 a.m.
Coordinated Transit 10:30 a.m.
- Apr. 20th – Transportation 10 a.m.
- Apr. 22nd – Earth Day
- Apr. 25th – Administrative Professionals' Day
- Apr. 26th – MAPA Board of Directors 1:30 p.m.
- Apr. 27th – Arbor Day

New communications intern joins MAPA staff

MAPA welcomes a new Communication and Public Relations Intern to the agency.

Alex Zuniga began working at MAPA in mid-October while finishing his undergraduate work at Creighton University.

He graduated in December with Bachelor's degrees in Public Relations and Graphic Design. Alex is from Vernon Hills, Illinois, a community in the northwest suburbs of Chicago.

Prior to working at MAPA, Alex held several positions in university organizations and in freelance work.



ALEX ZUNIGA
Communication and Public
Relations Intern

Metropolitan Area Planning Agency

2222 Cuming St., Omaha, NE 68102-4328

P: 402.444.6866 F: 402.951.6517

Email: mapa@mapacog.org

MAPA is an EOE/DBE employer