



**MAPA** Omaha - Council Bluffs  
Metropolitan Area  
Planning Agency

2016 Annual Report

# Speaking Officially



**Doug Kindig**  
PRESIDENT  
MAPA COUNCIL OF OFFICIALS

Another year brought a lot of activity for MAPA and its member communities, and a change in leadership for MAPA's Board of Directors.

Several projects with funding from the Federal Highway Administration and the Federal Transit Administration had major developments in 2016. We celebrated the completion of several others including those funded by Community Development Block Grants (CDBG) and the Community Improvements to Increase Economic Stability (C.I.T.I.E.S.) programs. A few highlights include:

- The final report and recommendations from the Platteview Road Corridor Study for the anticipated increases in traffic volumes along this roadway as development in Southern Sarpy County expands.
- Work began on the Sarpy County Transit Study to explore possible transit options for residents in the State of Nebraska's fastest-growing county.
- Heartland 2050 installed its Executive Committee which,

along with the implementation committees, submitted to the Board of Directors a draft Action Plan with specific action steps and goals to move the regional visioning project forward.

- Several projects to improve sewer and water system infrastructure completed in Pottawattamie and Mills Counties.

On a more personal note, fellow board member, Mills County Supervisor Ron Kohn, stepped down as chairman effective June 30, 2016. We want to thank him for his many years of service and leadership. He now serves as Vice Chairman of the Board of Directors and will continue in this role through the end of his current term as county supervisor which concludes in December 2016. He has chosen to seek retirement instead of re-election. Congratulations Ron on a job well-done!

It remains an honor and a pleasure to serve as president of MAPA's Council of Officials and new chair of MAPA's Board of Directors. We look forward to 2017 as we continue to connect with our communities to plan together for a thriving future and region.



**Rita Sanders**  
CHAIRMAN  
MAPA BOARD OF DIRECTORS

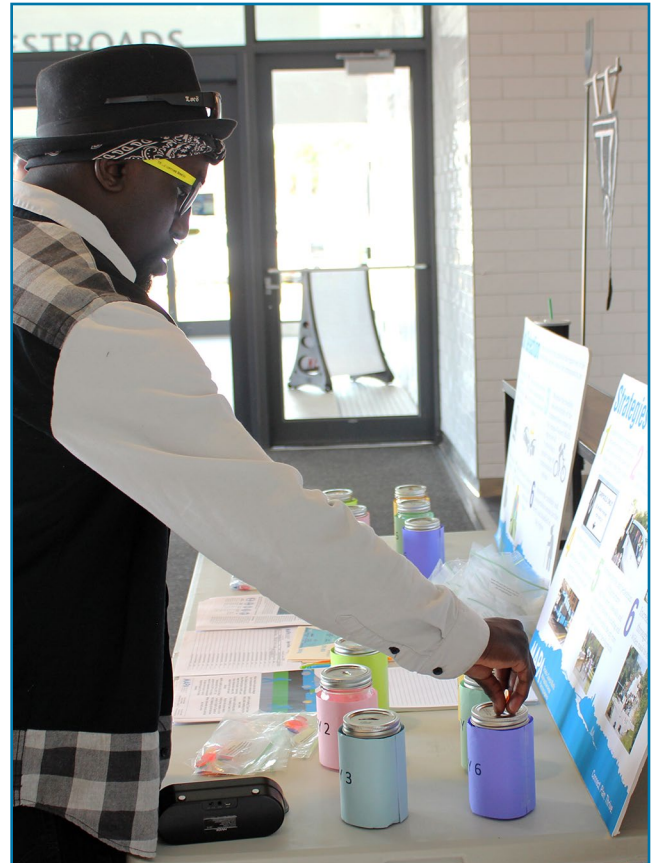
A handwritten signature in black ink that reads "Doug Kindig".

A handwritten signature in black ink that reads "Rita Sanders".





MAPA staff members participated in a staff retreat at Mahoney State Park. The day included staff bonding activities and understanding staff dynamics.



Members of the public participated in an activity to rank goals and strategies for the 2050 Long Range Transportation Plan at Westroads Mall.



Metro Transit brought in a demo Bus Rapid Transit (BRT) vehicle for its open houses that featured discussions about the configuration of the buses.



While at the National Association of Regional Councils, Bellevue Mayor Rita Sanders (third from right) enjoyed a bike tour of Salt Lake City, Utah.



Jeff Speck toured areas of the region to see some of the neighborhoods, including the Blackstone District where he met with Jay Lund and Matt Dwyer of Greenslate Development.



# Heartland 2050 Plan of Action developed for future use

Work on the Heartland 2050 Regional Vision continues to move forward. During the visioning process from 2013 to 2014 a plan was developed around six key areas for action. During the last year the Implementation Committees refined the vision by developing strategies and action steps.

Meeting monthly, more than 150 committee members worked diligently to complete their charge. The Action Plan was posted for public comment in the spring and summer of 2016 and received Executive Committee approval in summer 2016.

It will be on the slate for approval at the Council of Officials Annual Meeting on October 5, 2016. Find the Action Plan in its entirety online at [heartland2050.org](http://heartland2050.org).

The Implementation Teams were recognized for their work at the Summer Summit in August.

Transitioning to the next phase of implementation will involve designing a structure supporting work teams assigned to specific Action Steps and resulting projects.



Jeff Speck spoke to members of the media about what makes cities walkable before he took his tour of Omaha with MAPA staff.



Heartland 2050 Summit speakers discuss next steps for furthering community development during the 20/20 Vision Summit on February 24. (L to R) Margaret May, Julie Stavneak, Andy Wessel, and Dan Lofgren.



Attendees of the 20/20 Vision Summit participated in an ice breaker that focused on working together internally, as well as reaching out to other groups.

# “Close the Gap” initiative unveiled at summer summit

Heartland 2050’s “Close the Gap” initiative debuted at the close of the Summer Summit. “Close the Gap” is a clear plan for a more walkable, livable region. Executive Director Greg Youell highlighted the opportunities to create a robust transportation network that links educational institutions, connects areas of concentrated poverty to employment opportunities, and benefits our economy. Greg pointed out that nearly 30,000 people in the Heartland 2050 region do not own a vehicle and demonstrated why a transportation system will help attract and retain talent.

Close the Gap includes a plan to coordinate land use and transit. It calls for filling in the gaps to create vibrant neighborhoods, and using transit to close the gap between those vibrant neighborhoods to create a walkable region.

Goals of the Close the Gap plan include creating

best practices for infill development, encouraging regulatory flexibility for development in existing neighborhoods (nodes), generating opportunities for public and private partnerships, and identifying key corridors in the Heartland 2050 region.

Close the Gap is the catalyst to connect the goals and actions recommended by the implementation committees. By highlighting the initiative, Heartland 2050 will be more impactful on the region.

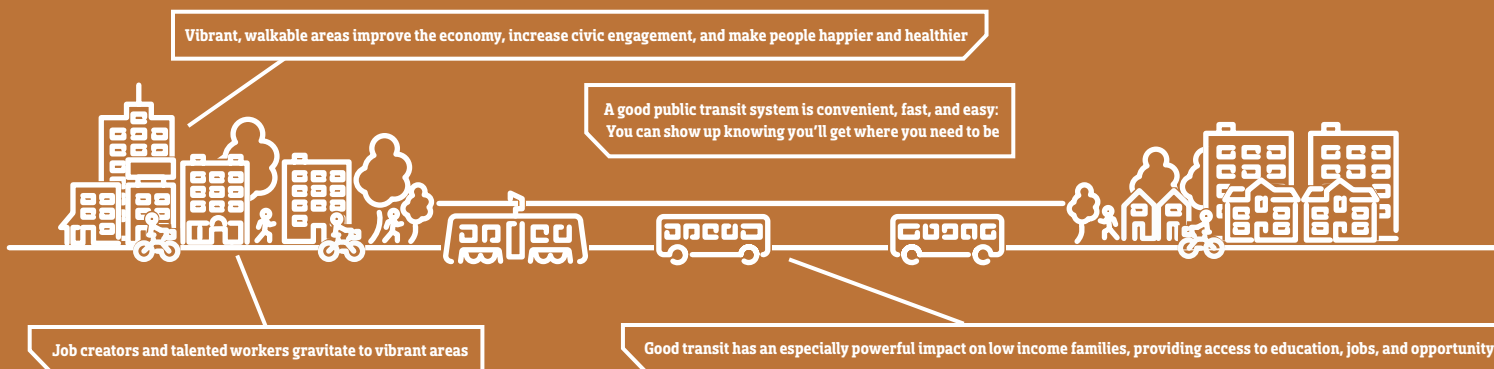


A clear plan for a more walkable, livable region.

## Land Use + Transit = Vibrant, Walkable, Livable Region

### Transit Closes the Gap Between Neighborhoods & Creates a Walkable Region

This vision is projected to save \$4.4 billion in public funds



# Planning for the beautiful Loess Hills moves forward

In the spring of 2014, with the Iowa Parks System's 2020 centennial approaching quickly, the Governor's Green Ribbon Commission, the Iowa Department of Natural Resources, and the Iowa Parks Foundation released Vision: Parks to People – Exceptional Places and Experiences in Everyday Lives: A 21st Century Park System Strategic Plan for Iowa. After considering current parks and facilities, the plan outlines a framework for the future:

- Employing public-private partnerships and grassroots support
- Strengthening a new private partner for parks, the Iowa Parks Foundation (IPF) across the State
- Locating dependable funding strategies
- Leveraging local planning
- Letting current and future park users help define Iowa's parks for the future
- Recognizing the critical importance of the county conservation and state park systems continuing to work powerfully together

Harrison, Mills, and Pottawattamie Counties along with the Friends of Lake Manawa were able

to secure \$20,000 from IPF to create a plan for the region. Together, the four entities provided a match of \$20,000. This plan works across jurisdictional, political, and physical boundaries to build community, connections, and collaborations that support the vitality of economic, cultural, and natural resources.

Through a series of focus groups, public engagement sessions, and stakeholder workshops, these groups reviewed and developed many concepts to meet regional needs. In the end, five key initiatives surfaced as fundamental to the work of this plan. Four focus on enhancements of the built environment and/or natural resources protection. The fifth emphasizes the exceptional talent in the region. In addition to MAPA, project partners include RDG and Golden Hills Resource Conservation and Development (RC&D).



LOESS HILLS  
MISSOURI RIVER REGION  
MASTER PLAN

## COMMUNITY ASSISTANCE

Throughout the year, MAPA assisted various communities in obtaining community funding for projects in the region. Below shows a breakdown of the types of funding that was used.

**CDBG**

Community Development Block Grant

**\$927,000**

**C.I.T.I.E.S.**

Community Improvements to Increase Economic Stability

**\$546,000**

**SRF**

State Revolving Loan Fund

**\$221,000**



# Pottawattamie County Comprehensive Plan updated

Prepared under the direction of the Pottawattamie County Planning Commission, the County's Comprehensive Plan Update serves as a guide for future development. The plan addresses many issues regarding the county's future and is designed to provide policy guidance, which will enable the citizens and elected officials to make informed judgments and decisions.

A Comprehensive Plan is intended to identify goals, policies, and procedures leading to the attainment of a high quality of life and provide a general guide for future decisions and development concepts. The Comprehensive Plan is also intended to build a strong economic base for the county.

The big considerations for the plan included: sensitivity of the Loess Hills, economic development opportunities, encouraging growth around and adjacent to existing communities, and the challenge of growth happening predominately in the western portion of the county.

In late 2015, the Pottawattamie County Board of Supervisors also requested MAPA's assistance in developing a multi-modal transportation plan. The Pottawattamie County Transportation Plan will provide a comprehensive glimpse

at transportation issues in the county and will propose a vision to guide investment in the transportation system. The plan builds on the policies and recommendations of the Comprehensive Plan to project transportation needs during the next 25 years.

The final plan will evaluate existing conditions, project future growth, and identify needs and deficiencies for roadways, bridges, and other transportation infrastructure within the county. These needs will be developed into projects and funding will be analyzed to establish the total amount of anticipated revenue for the County during the planning period. Technical Memorandum #1 was presented to the Pottawattamie Board of Supervisors and completion and adoption of the Transportation Plan is anticipated in early 2017.



## C.I.T.I.E.S. & CDBG

A number of projects in Pottawattamie and Mills Counties funded by the Community Development Block Grant (CDBG) and the Community Improvements to Increase Economic Stability (C.I.T.I.E.S.) programs finished in 2016.

Hancock, Iowa's water system improvements are completed. The CDBG program provided \$196,000 in funding for the project with the USDA Rural Development Program administering nearly \$1.1 million.

Macedonia, Iowa also completed water system improvements with funding from the Community Development Block Grant Program, the Iowa West C.I.T.I.E.S. program, and a loan from the State Revolving Loan Fund (SRF). Funds for the project included \$246,000 in CDBG

money, \$246,000 from the CITIES program, and \$121,000 from SRF.

Henderson, Iowa's sewer restoration project was completed in the spring of 2016. The Community Development Block Grant Program provided \$185,000 to the project while the State Revolving Loan Fund provided a \$100,000 loan.

Walnut, Iowa is scheduled to begin construction on a downtown revitalization project this fall. A \$300,000 grant from the Community Development Block Grant program, a grant the Iowa West C.I.T.I.E.S. program of another \$300,000, and \$150,000 in funding from the City of Walnut and local business owners will help restore the building facades along the main street.

# MAPA adds housing program to list of available services

Responding to the need for quality housing which local communities have shared with MAPA staff, the Omaha-Council Bluffs Metropolitan Area Planning Agency (MAPA) now offers a new housing rehabilitation program among its services.

The program focuses on owner-occupied rehabilitation in rural and smaller communities



**New MAPA housing program will focus on rehabilitation of owner-occupied homes in the five counties that MAPA represents.**

but MAPA is available to assist more urban and suburban areas as well. While housing programs are common areas of focus for economic development districts in Nebraska and Iowa, this is MAPA's first venture into housing.

Owner-occupied rehabilitation will include replacing key components of structures such as roofs, windows, and heating and cooling systems. Benefits of owner-occupied rehabilitation work include: reduced monthly utility costs, improved energy performance, minimized ongoing maintenance for homeowners, and preservation of housing units.

Preliminary plans are to secure funding from all available sources within the Nebraska Department of Economic Development to help repair houses in targeted locations.

The program will begin by assisting Nebraska homeowners; however, services will be available in the two Iowa counties MAPA represents: Pottawattamie and Mills.

## Transportation funding boosted by passage of FAST Act

Transportation funding in the Omaha-Council Bluffs metropolitan area received a large boost in November 2015 with passage of the Fixing America's Surface Transportation (FAST) Act.

The five-year transportation bill is the first long-term transportation funding bill passed by Congress in 10 years. Prior to passage of the FAST Act, Congress had passed 36 short-term extensions for transportation funding, according to statistics released by U.S. Transportation Secretary Anthony Foxx.

Figures on how much funding will be allocated to metropolitan areas are encouraging with nearly \$17 million anticipated for the Omaha-Council Bluffs metropolitan area and yearly increases

expected. However, Congress must appropriate the funds each year. The bill includes funding for bike and pedestrian projects as well.

New federal performance measures for Metropolitan Planning Organizations (MPOs) such as MAPA are also tied to the FAST Act. The Federal Highway Administration (FHWA) is proposing national performance management measure regulations to assess the performance of the National Highway System, Freight Movement on the Interstate System, and the Congestion Mitigation and Air Quality Improvement Program. Details about the new performance measures have not been released at this time.



# Sarpy County Transit Study gets underway in early 2016

Faced with the fastest-growing population in the state and the needs brought by neighborhood development, MAPA and Sarpy County together are conducting a study to assess additional transit services which would be beneficial in meeting the needs of county residents.

The purpose of this study is to identify the existing and future demand for transit services in Sarpy County, identify strategies to improve existing services, target new services, and identify a deployment schedule to meet the changing needs of Sarpy County residents.

A series of public meetings has taken place in Sarpy County to gather information from residents on the types of transit services that

would best meet their needs. Meetings with key stakeholder groups are also underway. Key stakeholders include governmental agencies, major employers, transit providers, nonprofit organizations and correctional institutions.

Recommendations on options for expanded transit services are expected to be presented to stakeholders and the public in early 2017.

Work on a project to expand transit options in Omaha continues. In June, Metro Transit hosted two open houses for the Bus Rapid Transit (BRT) which included a demo 60-foot articulated bus similar to the style of bus which will be operating on the City of Omaha's BRT route.

The open houses included project updates and discussion about the configuration of the buses. Attendees toured the bus and provided feedback on amenities they would like to see inside. Some amenities include next stop mapping, stop request buttons and different types of handrails as well as the types of bike storage available.

Construction on the BRT line is slated to begin in late 2016 with the line opening projected in the fall of 2018.



## MTIS recommendations part of outreach for 2050 LRTP

Public feedback on goals and strategies outlined in Phase II of Metro Area Travel Improvement Study (MTIS) are a key part of the outreach for MAPA's 2050 Long Range Transportation Plan (LRTP).

MTIS identifies long-term needs of the interstate and freeway system in the Omaha metro region as well. The data collected includes information about pavement condition, the condition of bridges, travel time, vehicle crashes and the short-term needs of Metro Transit.

Through multiple public meetings during the year, MAPA asked people to rank the goals for the

region's transportation system and the strategies to accomplish them which have been identified in past surveys completed by the public and stakeholder groups.

These sets of goals and strategies each contain different project types, corridors and levels of funding to meet the region's needs based on the findings of Phase I of MTIS. The feedback gathered from the planning process will be incorporated into the 2050 Long Range Transportation Plan (LRTP).

MAPA expects to release a draft plan of the 2050 LRTP in the spring of 2017.

# Platteview Road Study recommendations released

MAPA issued the final report of its Platteview Road Corridor Study in May. The study analyzes transportation and land use options for the corridor to assess future development options and identify transportation strategies. It includes an analysis of existing traffic conditions and findings and recommendations for both short-term and long-term projects as well as land use plans to improve traffic safety along the route while allowing for growth.

Platteview Road was identified for a corridor study because of the relocation of U.S. Highway 34 with a new Missouri River bridge crossing and a future direct connection to Platteview Road. This connection creates a new east-west connection between Interstates 29 and 80 in the southern portion of the Omaha-Council Bluffs metropolitan region.

One recommendation that would allow for travel through the year 2040, if the Heartland 2050 land use plan is followed, is a four-lane arterial road with access points spaced one-quarter mile apart. However, the study finds due to the analysis of development expected beyond the year 2040, an expressway with access points at one-half mile

and one mile would best accommodate travel movements into and out of the southern portion of Sarpy County.



Also included in the recommendations is a southern bypass of Springfield to provide for continuous movement of traffic and an interchange with Highway 50 (144th Street). Preservation of the right-of-way for both the expressway and arterial sections with improvements to Platteview Road is among the list of short-term projects as well.

The study included assistance from Sarpy County, the Nebraska Department of Roads (NDOR), the Federal Highway Administration (FHWA) and the communities of Bellevue, Springfield, Gretna and Papillion.

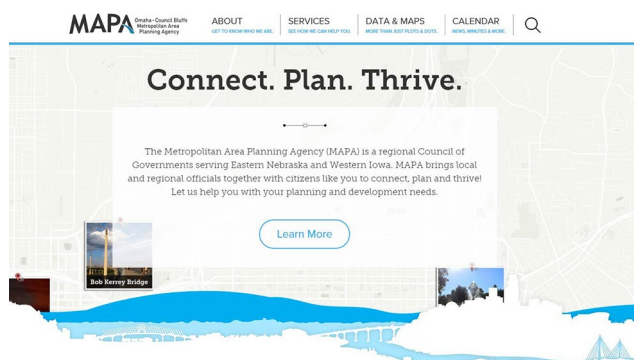
## New website launches with better service for members

With its member communities' needs in mind, MAPA debuted a new website in November 2015. The site's new capabilities allow MAPA to provide members, communities, and the public with better service through improved functionality.

Some of the mapacog.org enhancements include: better search capabilities allowing users to find data and documents more easily based on keyword and acronyms, the ability to sort data, maps and events based on geography, publish date category or file type, and the ability for users to view and download geographic data.

There is also a "Get Involved" page where users

can complete a form to learn more about one of MAPA's projects, submit public comments on one of MAPA's plans or projects, schedule a speaker or receive assistance on a different topic involving the agency.





# Little Steps Big Impact adds new elements to campaign

Educating the public on the region's air quality issue with ground-level ozone and how to mitigate it, is the mission of MAPA's Little Steps Big Impact campaign.

This year the campaign added a new component to its educational efforts by offering an ozone monitoring program to area schools. Through a generous donation by Clean Fuels Omaha, Little Steps Big Impact obtained four hand-held ozone monitors for use by school districts in the Omaha-Council Bluffs metropolitan area. So far schools from three separate districts have participated by including classroom lessons on air quality in their science classes followed by outside activities in which students use the monitors to view concentrations of ground-level ozone.

Digital billboards are another new tool the campaign used this year to promote awareness of ground-level ozone. Two digital billboards

located in parts of Omaha with very high traffic areas display the daily Air Quality Index forecast for ozone along with emojis or symbols for the corresponding level of ozone, e.g. Good, Moderate, Unhealthy for Sensitive Groups, Unhealthy, Very Healthy and Hazardous. The billboards are located near 44th and Dodge Streets and on Interstate 80 at 80th Street.

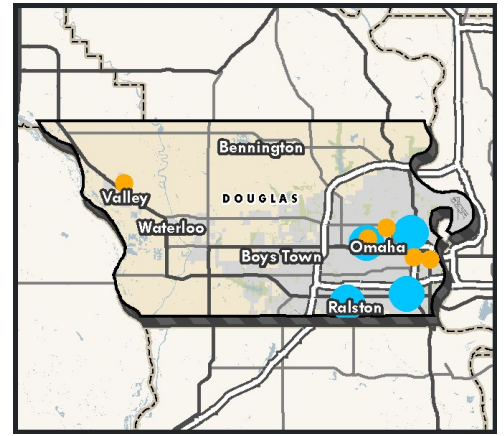


## Region-wide Community Assistance

- Administered 5310 and JARC grants for new vehicles for agencies and jurisdictions serving the elderly, low income, disabled and veterans.
- Coordinated with Live Well Omaha, Heartland B-Cycle, and the City of Omaha on CMAQ grant to expand B-Cycle system.
- Designed and published MAPA newsletters and 2015 Annual Report.
- Board members and staff attended NARC Conference in Washington D.C. and met with congressional delegation to provide an update on MAPA activities.
- Developed list of priority local projects for Build Nebraska Act stakeholder meetings to submit MAPA priorities to states.
- Completed the 2014 Traffic Growth Report, Intersection Report and Interchange Report, and Traffic Flow Map.
- Completed the 2014 Regional Crash Map and associated database.
- Worked with partners to plan and hold Citizens Academy to engage the public about governmental services.
- Raised local contributions to conduct Little Steps Big Impact campaign and launched social and broadcast media campaigns.
- Held Heartland 2050 committee meetings, summits, and developed Action Plan.
- Facilitated Growing Foods Connection Steering Committee.
- Administered Regional Planning Affiliation (RPA)-18 Transportation Improvement Program (TIP), Long Range Transportation Plan (LRTP) and Transportation Planning Work Program (TPWP) for Harrison, Mills, Pottawattamie and Shelby counties.

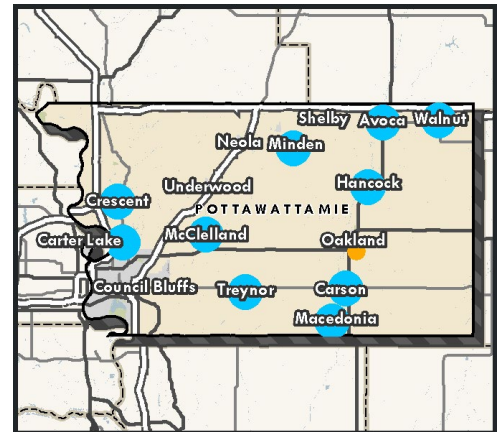
# Douglas County

- Assisted with successful Leadership Community designation for Ralston.
- Completed work on South Omaha Brownfields Area-Wide Plan.
- Supported Metro Transit on Bus Rapid Transit project.
- Presented economic development white paper to Nebraska State Legislature Urban Affairs Committee.
- Coordinated Metro One Call Mobility Project with VA Transportation.
- Advanced Bike Education Safety project with Live Well Omaha.
- Completed Omaha Healthy Kids Alliance – Institute for Sustainable Communities grant application.
- Participated in Omaha Community Foundation (OCF) Landscape project.
- Coordinated with Omaha Economic Development Corporation on vertical farming project.
- Helped develop obesity and nutrition strategies for the updated Douglas County Comprehensive Health Improvement Plan to coordinate with the Heartland 2050 Health and Safety Committee outcomes.
- Assisted City of Omaha and Empowerment Network in the HUD Promise Zone application process.
- Reviewed Economic Development Administration (EDA) Technical Assistance application with Omaha Economic Development Corporation.
- Advanced Smart City – Omaha application for Department of Transportation (DOT) funding to congressional delegates.
- Participated in Greater Omaha Chamber Site TAG Committee on current site development.
- Served on Omaha by Design Advisory Committee.
- Advanced Federal-aid transportation projects with Omaha, NDOR, FHWA, and FTA.



# Pottawattamie County

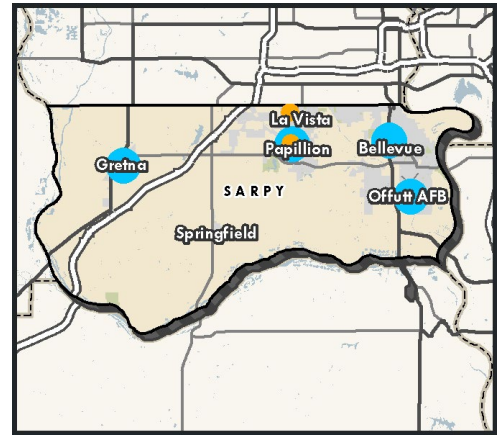
- Submitted City of Minden downtown beautification application.
- Completed Pottawattamie County and Crescent Comprehensive Plans.
- Completed FY2016-2019 MPO and RPA-18 Transportation Improvement Programs (TIP) and submitted to Iowa DOT for review.
- Provided input on Loess Hills Missouri River Region Parks to People plan.
- Closed out Community Development Block Grant (CDBG) work for Hancock, Macedonia, and Walnut projects.
- Wrote Avoca SAFER grant and Assistance to Firefighters grant applications.
- Facilitated efforts with Pottawattamie County on Solid Waste Management Task Force.
- Submitted McClelland Hazard Mitigation Grant Program application.
- Completed updates to Carson and Walnut strategic plans.
- Assisted with Crescent downtown assessment with EDA.
- Proposed services for Treynor Comprehensive Plan update.
- Participated with Carson and Macedonia on potential Downtown Revitalization application from Iowa Economic Development Authority (IEDA).
- Evaluated possible Community Development Block Grant (CDBG) application for sewer improvements in Carter Lake.
- Developed Technical Memorandum 1 for the Pottawattamie County Transportation Plan.
- Advanced Federal-aid transportation projects with Pottawattamie County communities, Iowa DOT, and FHWA.





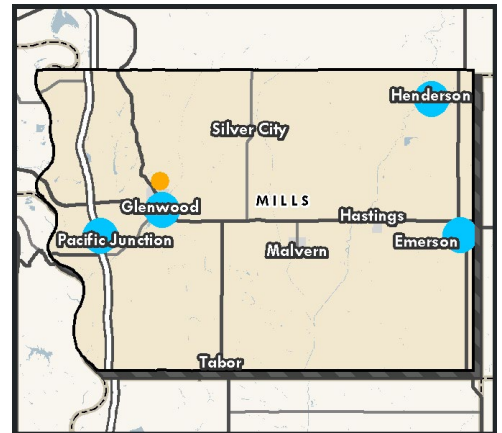
# Sarpy County

- Secured funding for Offutt AFB Joint Land Use Study (JLUS).
- Assisted with successful Leadership Community designation for Gretna.
- Provided data and administrative support on Southern Ridge Sewer Study.
- Provided funding for American Heroes Park in Bellevue.
- Facilitated public and stakeholder outreach for the Sarpy County Transit Study and the Platteview Corridor Study.
- Updated land use forecasts for Sarpy County local governments.
- Hosted April Council of Officials meeting in La Vista at Karray's Café.
- Investigated infrastructure funding for Springfield.
- Advanced Federal-aid transportation projects with Sarpy County Communities, NDOR, FHWA, and FTA.



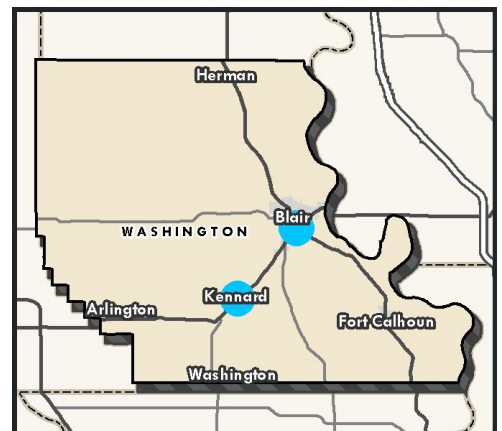
# Mills County

- Completed FY2016-2019 RPA-18 Transportation Improvement Program (TIP) and submitted to Iowa DOT for review.
- Advanced Federal-aid transportation projects with Mills County communities, Iowa DOT, and FHWA.
- Completed work on Community Development Block Grant (CDBG) for Henderson.
- Developed scope and identified funding for potential Mills County Economic Development Plan.
- Assisted with Emerson downtown assessment with Economic Development Administration (EDA).
- Provided technical assistance to Mills County Emergency Management Agency to apply for Hazard Mitigation Grant Program funding.
- Completed Emerson grant application for Keep Iowa Beautiful and Build with Bags.
- Consulted Pacific Junction on issues related to annexation.
- Began work on updates for Mills County Comp and Urban Renewal Plans.
- Hosted annual meeting in Mills County at Bella Terre.

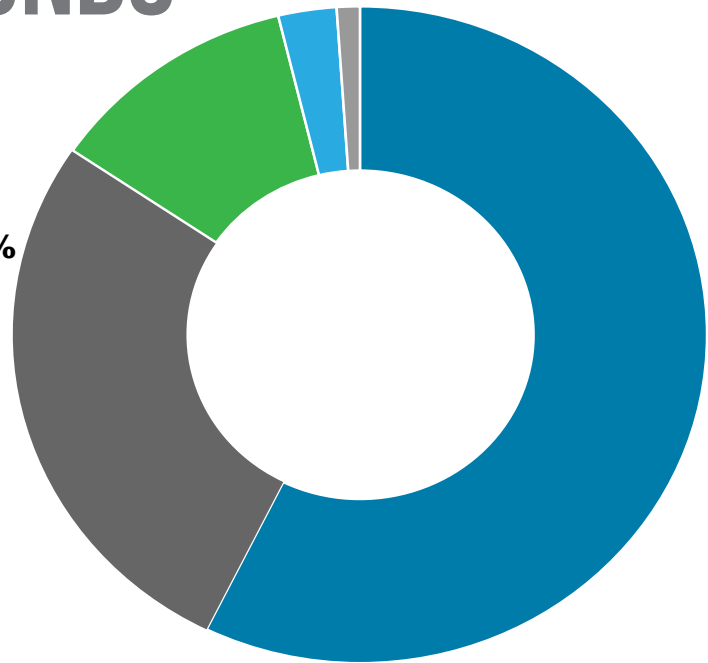
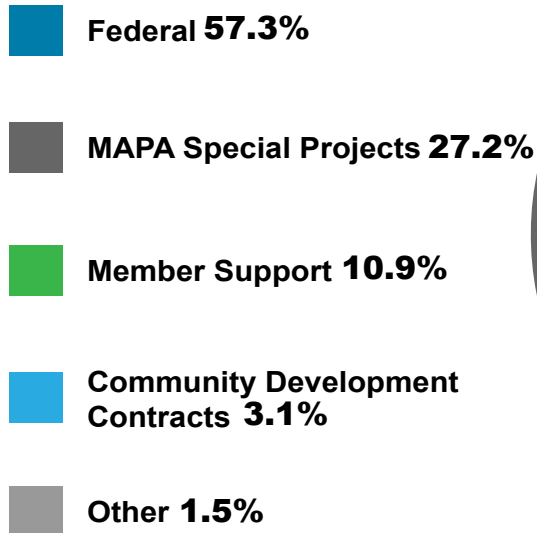


# Washington County

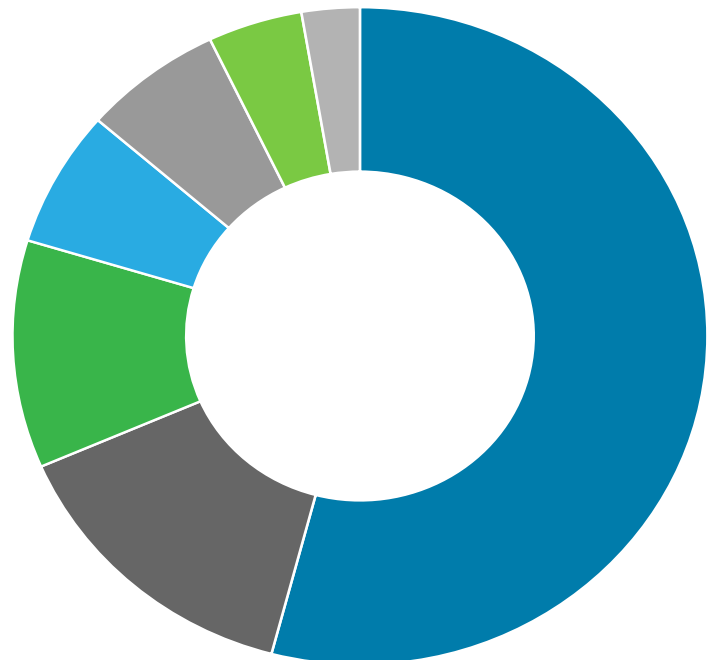
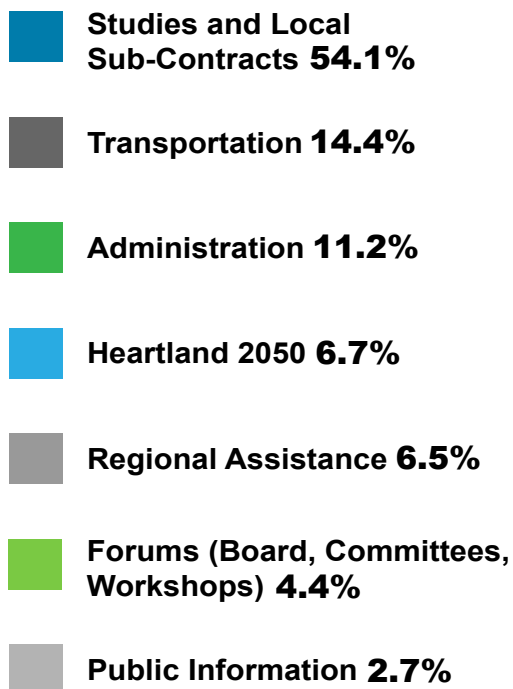
- Finalized work on Kennard Comp Plan.
- Completed Community Development Block Grant (CDBG) work for Kennard.
- Conducted environmental review for Blair Housing Authority projects.
- Administration for CDBG re-use for KB Quality Meats, LLC in Blair.
- Administered CDBG Program Income Report to City of Blair.
- Completed Nebraska Showcase Community Award nomination for the Village of Kennard.



## SOURCE OF FUNDS

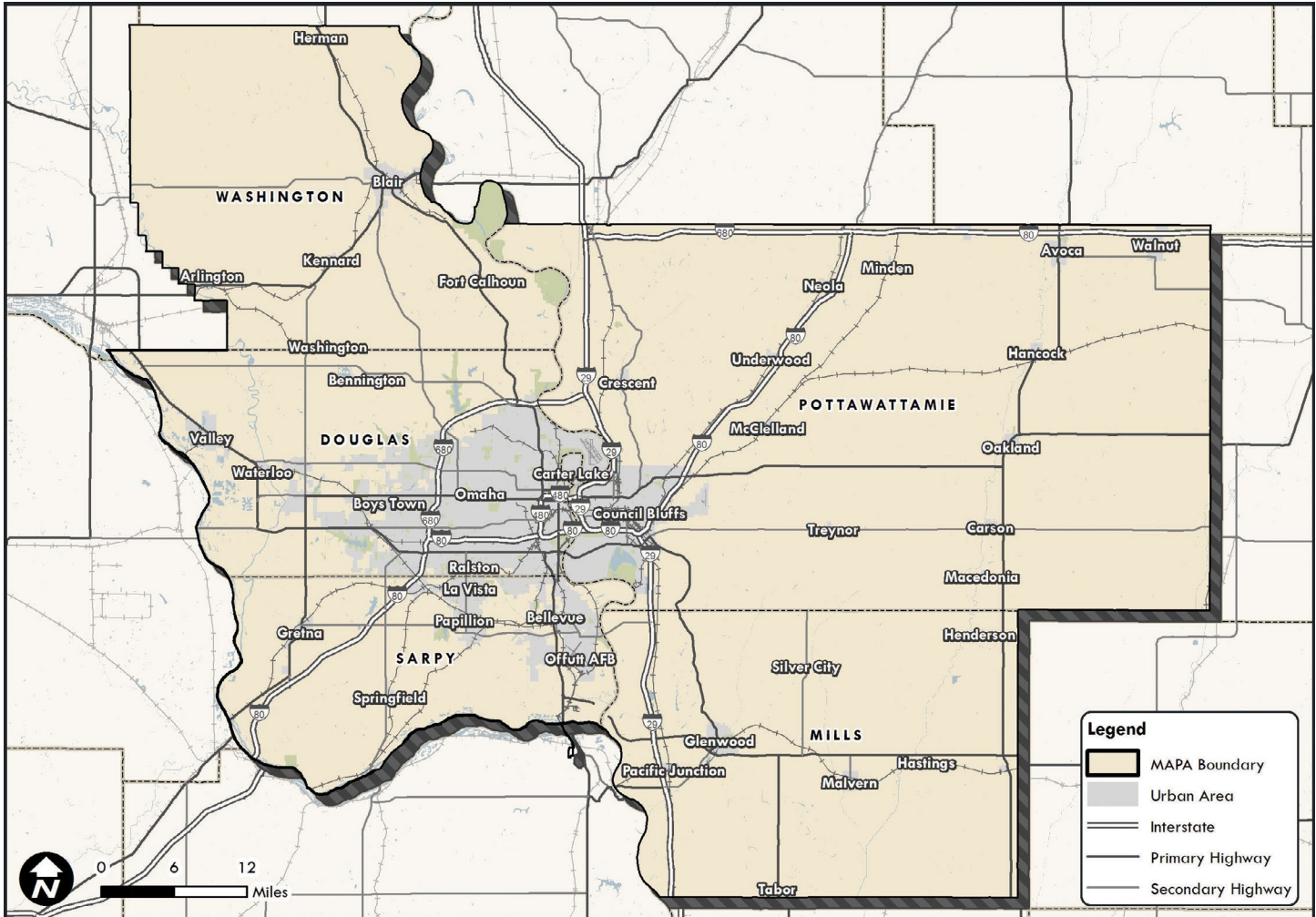


## APPLICATION OF FUNDS





# MAPA Region



## METROPOLITAN AREA PLANNING AGENCY

2222 Cuming St. Omaha, NE 68102 Phone: 402.444.6866 Fax: 402.951.6517  
Email: [mapa@mapacog.org](mailto:mapa@mapacog.org) Website: [mapacog.org](http://mapacog.org) Twitter: [@mapacog](https://twitter.com/mapacog)

## MAPA STAFF

**Greg Youell**  
Executive Director

**Fabiola Alikpokou**  
Intern

**Grant Anderson**  
Community and Economic  
Development Planner

**Court Barber**  
Transportation Planner

**Natasha Barrett**  
Bookkeeper

**Christina Brownell**  
Administrative Assistant

**Josh Corrigan**  
GIS Coordinator

**Sue Cutsforth**  
Information Officer

**Lynn Dittmer**  
Community and Economic  
Development Manager

**Melissa Engel**  
Director of Finance  
and Operations

**Michael Felschow**  
Program Director

**Trang Hoang\***  
Intern

**Michael Helgerson**  
Transportation Planner

**Chuck Karpf**  
Housing Coordinator

**Karna Loewenstein**  
Heartland 2050 Coordinator

**Patti McCoy**  
Administrative Assistant

**Amanda Morales**  
Fiscal Officer

**Ashley Myers\***  
Transportation Planner

**Annie Pigaga**  
Graphics Assistant

**Matt Roth**  
Community and Economic  
Development Planner

**Jeff Spiehs**  
Community Relations Manager

**Owen Stuckey**  
Intern

**Rachel Tucker\***  
Intern

**Megan Walker**  
Transportation Planner

**Madi Woodrum**  
Intern

**Gary Young**  
Transportation Planner

\* Employee who contributed to FY2016 programs but is no longer employed at MAPA.

# MAPA Council of Officials

Figures in parentheses represent 4/1/2010 Census Bureau population numbers

## Nebraska

DOUGLAS COUNTY (531,265) .....	CLARE DUDA (rep. Board Chairman Mary Ann Borgeson)
Bennington (1,458) .....	* GORDON MUELLER, Mayor
Boys Town (745) .....	* JOHN MOLLISON (rep. Board Chairman Rev. Steven Boes)
Omaha (408,958) .....	JEAN STOTHERT, Mayor
Omaha City Council .....	BEN GRAY, City Councilmember
Ralston (5,943) .....	RICH ONKEN (rep. Mayor Don Groesser)
Valley (1,875) .....	* JOAN SUHR (rep. Mayor Carroll Smith)
Waterloo (848) .....	* KEN HITCHLER, Village Board Chairman
SARPY COUNTY(158,840) .....	TOM RICHARDS (rep. Board Chairman Brenda Carlisle)
Bellevue (50,137) .....	* RITA SANDERS, Mayor
Gretna (4,441) .....	JEFF KOOSTRA (rep. Mayor Jim Timmerman)
La Vista (15,758) .....	DOUG KINDIG, Mayor
Papillion (18,894) .....	DAVID BLACK, Mayor
Springfield (1,529) .....	ROBERT ROSELAND, Mayor
WASHINGTON COUNTY (20,234) .....	CARL LORENZEN, Supervisor (rep. Board Chairman Jeff Quist)
Arlington (1,243) .....	PAUL KRAUSE, Village Board Chairman
Blair (7,990) .....	JIM REALPH, Mayor
Fort Calhoun (908) .....	DAVID GENOWAYS (rep. Mayor Mitch Robinson)
Herman (268) .....	THOMAS KEGLER, Village Board Chairman
Kennard (361) .....	CLINT PEARSON, Village Board Chairman
Washington (155) .....	ERNEST BELIK, (Board of Trustees)

## Iowa

MILLS COUNTY (15,059) .....	RON KOHN, Board Chairman
Emerson (438) .....	ROB ERICKSON, Mayor
Glenwood (5,269) .....	BRIAN TACKETT, Mayor
Hastings (152) .....	RODNEY W. COURTIER, Mayor
Henderson (185) .....	MICHAEL BAUMFALK, Mayor
Malvern (1,142) .....	MICHAEL K. BLACKBURN, Mayor
Pacific Junction (471) .....	ANDY YOUNG, Mayor
Silver City (275) .....	* GARY FRANKFORTER, Mayor
POTTAWATTAMIE COUNTY (93,158) .....	TOM HANAFAN, (rep. Board Chairman Lynn Grobe)
Avoca (1,506) .....	JERALD ESPESETH, Mayor
Carson (812) .....	* TIM TODD, Mayor
Carter Lake (3,785) .....	GERALD WALTRIP, Mayor
Council Bluffs (62,230) .....	MATTHEW J. WALSH, Mayor
Crescent (617) .....	BRIAN SHEA, Mayor
Hancock (196) .....	HAROLD HOFFMAN, Mayor
Macedonia (246) .....	EILEEN C. ADICKES, Mayor
McClelland (151) .....	EMMET DOFNER, Mayor
Minden (599) .....	KEVIN ZIMMERMAN, Mayor
Neola (842) .....	PETE SORENSON, Mayor
Oakland (1,527) .....	MICHAEL O'BRIEN, Mayor
Treynor (919) .....	BRYCE POLAND, Mayor
Underwood (917) .....	DENNIS BARDSLEY, Mayor
Walnut (785) .....	GENE LARSEN, Mayor

## SPECIAL PURPOSE GOVERNMENTAL ENTITIES

Bellevue Public Schools .....	NINA WOLFORD, Board President
Council Bluffs Airport Authority .....	ANDY BILLER (rep. Board President John Dalton)
Council Bluffs Planning Commission .....	MARY ANN BRAGG, Board Chairman
Fremont School District .....	DR. STEPHEN SEXTON, Superintendent
Golden Hills Resource Conservation & Development .....	BARRY DEUEL, Board Chairman
Iowa Western Community College .....	DOUG GOODMAN, Board Chairman
Metro .....	AMY HAASE, Board Chairman
Metropolitan Utilities District .....	SCOTT KEEP (rep. Board Chairman Mike McGowan)
Metropolitan Community College .....	JIM GROTRIAN, (rep. Board Chairman Ron Hug)
Millard Public Schools .....	DR. KEITH LUTZ, Superintendent
Millard Suburban Fire District .....	KEVIN EDWARDS, Fire Chief (rep. Board President Jennifer Nienaber)
Omaha Airport Authority .....	DAN OWENS (rep. Board Chairman Eric Butler)
Omaha Housing Authority .....	KAREN WATSON, Board Vice-Chair
Omaha Planning Board .....	ANNA NUBEL, Board Chairman
Omaha Public Power District .....	TOM RICHARDS (rep. Board Chairman NP (Sandy) Dodge)
Papillion-La Vista Public Schools .....	ANDREW RIKLI, Superintendent
Papio Missouri River NRD .....	JOHN WINKLER, Board Chairman
Pony Creek Drainage District .....	JAY CHRISTENSEN, Board Chairman
Ralston Public Schools .....	LINDA RICHARDS, Board President
Valley Fire District #5 .....	AARON UECKERT, Board President

\* Board Members

Board Chairman .....	RITA SANDERS
Board Vice-Chairman .....	RON KOHN
Secretary-Treasurer .....	PATRICK BLOOMINGDALE
Legal Counsel .....	PAUL KRATZ (City of Omaha)

The preparation of this publication is financed through planning grants from the U.S. Dept. of Transportation through Iowa DOT and the Nebraska Dept. of Roads as Provided by the Federal Highway Administration, the Federal Transit Administration and the Economic Development Administration and through local funds from member jurisdictions. The views and opinions MAPA expressed herein do not necessarily state or reflect those of the U.S. Department of Transportation or the Economic Development Administration.



U.S. Department of Transportation  
Federal Highway Administration